

DATASHEET

AE4 Rabbit Polyclonal Antibody

CAT. NO. APA11192

KEY FEATURES

Target	AE4	Source / Host	Rabbit
Reactivity	Human, Mouse, Rat	Clonality	Polyclonal
Applications	WB	Conjugation	Unconjugated
Form / Buffer	Liquid in 0.42% Potassium phosphate, 0.87% Sodium chloride, pH 7.3, 30% glycerol, and 0.01% sodium azide.		Storage at -20°C

BACKGROUND

Electroneutral Cl(-)/HCO3(-) antiporter that favors chloride ion entry and efflux of hydrogencarbonate and sodium ion across the basolateral membrane and may participate in salivary secretion /HCO3(-) antiporter that favors chloride ion entry and efflux of hydrogencarbonate and sodium ion across the basolateral membrane and may participate in salivary secretion . Also mediates Cl(-)/HCO3(-) exchange activity in the presence of K(+) as well as Cs(+), Li(+), and Rb(+). Does not contribute to Cl(-)/HCO3(-) exchanger in the apical membrane of the upper villous epithelium .

APPLICATION

To ensure optimal assay performance, AREX recommends conducting reagent titration tailored to each testing system for optimal detection results.

WB	1:500 - 1:1000
----	----------------

*Results are sample-specific. Please refer to your local assay conditions and test parameters for reference.

PRODUCT OVERVIEW

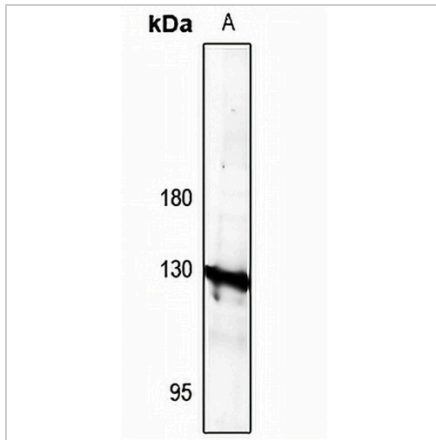
Description	Rabbit polyclonal antibody to AE4
Specificity	Recognizes endogenous levels of AE4 protein.
Antibody Type	Primary antibody
Immunogen	KLH-conjugated synthetic peptide encompassing a sequence within the C-term region of human AE4. The exact sequence is proprietary.
Purification	The antibody was purified by immunogen affinity chromatography.
Molecular Weight	Predicted: 108 kD; Observed: 125 kD
Form/Buffer	Liquid in 0.42% Potassium phosphate, 0.87% Sodium chloride, pH 7.3, 30% glycerol, and 0.01% sodium azide.
Alternative Names	AE4; SBC5; Anion exchange protein 4; AE 4; Anion exchanger 4; Sodium bicarbonate cotransporter 5; Solute carrier family 4 member 9
Gene Symbol	SLC4A9
Entrez Gene	83697(Human); 266612(Rat)
SwissProt	Q96Q91(Human); Q8K4V2(Rat)

*AREX continuously optimizes our products. Webpage content may not reflect the latest updates. For inquiries, please contact info@arexbio.com or your local distributor.

*Clone Number, Reactivity, Source/Host and Clonality can be found in the product name and Key Features section above.

DATASHEET**AE4 Rabbit Polyclonal Antibody**

CAT. NO. APA11192

DATA

Western blot analysis of AE4 expression in HEK293T (A) whole cell lysates. (Predicted band size: 108 kD; Observed band size: 125 kD)

STORAGE

Store at 4°C short term. For long term storage, store at -20°C, avoiding freeze/thaw cycles.

NOTE

For Research Use Only. Not for diagnostic, therapeutics, prophylactic or in vivo use.