

DATASHEET
GRLF1 (Phospho-Y1105) Rabbit Polyclonal Antibody
CAT. NO. APA11195
KEY FEATURES

Target	GRLF1 (Phospho-Y1105)	Source / Host	Rabbit
Reactivity	Human, Mouse, Rat, Dog, Pig	Clonality	Polyclonal
Applications	WB, IHC	Conjugation	Unconjugated
Form / Buffer	Liquid in 0.42% Potassium phosphate, 0.87% Sodium chloride, pH 7.3, 30% glycerol, and 0.01% sodium azide.		Storage at-20°C

BACKGROUND

Rho GTPase-activating protein (GAP) . Binds several acidic phospholipids which inhibits the Rho GAP activity to promote the Rac GAP activity . This binding is inhibited by phosphorylation by PRKCA . Involved in cell differentiation as well as cell adhesion and migration, plays an important role in retinal tissue morphogenesis, neural tube fusion, midline fusion of the cerebral hemispheres and mammary gland branching morphogenesis . Transduces signals from p21-ras to the nucleus, acting via the ras GTPase-activating protein (GAP) . Transduces SRC-dependent signals from cell-surface adhesion molecules, such as laminin, to promote neurite outgrowth. Regulates axon outgrowth, guidance and fasciculation .

APPLICATION

To ensure optimal assay performance, AREX recommends conducting reagent titration tailored to each testing system for optimal detection results.

WB	1:500 - 1:1000
IHC	1:50 - 1:200

*Results are sample-specific. Please refer to your local assay conditions and test parameters for reference.

PRODUCT OVERVIEW

Description	Rabbit polyclonal antibody to GRLF1 (Phospho-Y1105)
Specificity	Recognizes endogenous levels of GRLF1 protein only when phosphorylated at Y1105.
Antibody Type	Primary antibody
Immunogen	KLH-conjugated synthetic phosphopeptide corresponding to residues surrounding Y1105 of human GRLF1 protein. The exact sequence is proprietary.
Purification	The antibody was purified by immunogen affinity chromatography.
Molecular Weight	Predicted: 170 kD; Observed: 190 kD
Form/Buffer	Liquid in 0.42% Potassium phosphate, 0.87% Sodium chloride, pH 7.3, 30% glycerol, and 0.01% sodium azide.
Alternative Names	GRF1; GRLF1; KIAA1722; Rho GTPase-activating protein 35; Glucocorticoid receptor DNA-binding factor 1; Glucocorticoid receptor repression factor 1; GRF-1; Rho GAP p190A; p190-A
Gene Symbol	ARHGAP35
Entrez Gene	2909(Human); 232906(Mouse)
SwissProt	Q9NRY4(Human); Q91YM2(Mouse); P81128(Rat)

*AREX continuously optimizes our products. Webpage content may not reflect the latest updates. For inquiries, please contact info@arex.bio or your local distributor.

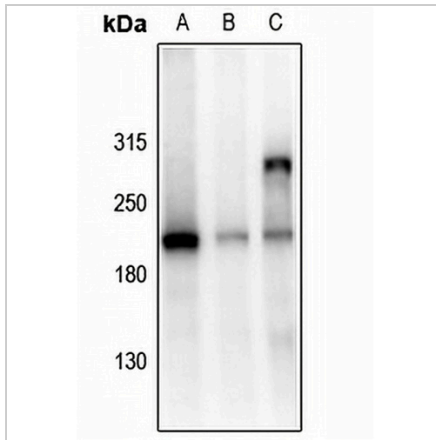
*Clone Number, Reactivity, Source/Host and Clonality can be found in the product name and Key Features section above.

DATASHEET

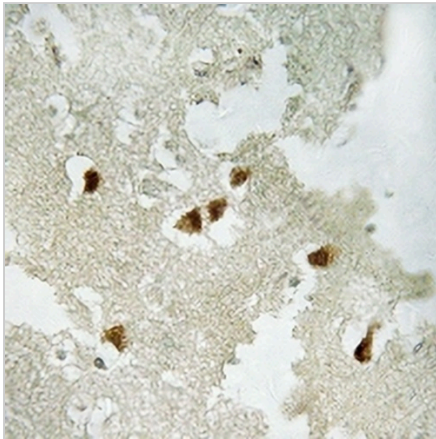
GRLF1 (Phospho-Y1105) Rabbit Polyclonal Antibody

CAT. NO. APA11195

DATA



Western blot analysis of GRLF1 (Phospho-Y1105) expression in C6 (A), Jurkat (B), K562 (C) whole cell lysates. (Predicted band size: 170 kD; Observed band size: 190 kD)



Immunohistochemical analysis of GRLF1 (Phospho-Y1105) staining in human brain formalin fixed paraffin embedded tissue section. The section was pre-treated using heat mediated antigen retrieval with sodium citrate buffer (pH 6.0). The section was then incubated with the antibody at room temperature and detected using an HRP conjugated compact polymer system. DAB was used as the chromogen. The section was then counterstained with haematoxylin and mounted with DPX.

STORAGE

Store at 4°C short term. For long term storage, store at -20°C, avoiding freeze/thaw cycles.

NOTE

For Research Use Only. Not for diagnostic, therapeutics, prophylactic or in vivo use.