

DATASHEET

TOB (Phospho-S164) Rabbit Polyclonal Antibody

CAT. NO. APA11226

KEY FEATURES

Target	TOB (Phospho-S164)	Source / Host	Rabbit
Reactivity	Human, Mouse, Rat	Clonality	Polyclonal
Applications	WB, IHC	Conjugation	Unconjugated
Form / Buffer	Liquid in 0.42% Potassium phosphate, 0.87% Sodium chloride, pH 7.3, 30% glycerol, and 0.01% sodium azide.		Storage at -20°C

BACKGROUND

Anti-proliferative protein; the function is mediated by association with deadenylase subunits of the CCR4-NOT complex . Mediates CPEB3-accelerated mRNA deadenylation by binding to CPEB3 and recruiting CNOT7 which leads to target mRNA deadenylation and decay .

APPLICATION

To ensure optimal assay performance, AREX recommends conducting reagent titration tailored to each testing system for optimal detection results.

WB	1:500 - 1:1000
IHC	1:50 - 1:200

*Results are sample-specific. Please refer to your local assay conditions and test parameters for reference.

PRODUCT OVERVIEW

Description	Rabbit polyclonal antibody to TOB (Phospho-S164)
Specificity	Recognizes endogenous levels of TOB protein only when phosphorylated at S164.
Antibody Type	Primary antibody
Immunogen	KLH-conjugated synthetic phosphopeptide corresponding to residues surrounding S164 of human TOB protein. The exact sequence is proprietary.
Purification	The antibody was purified by immunogen affinity chromatography.
Molecular Weight	Predicted: 38 kD; Observed: 38 kD
Form/Buffer	Liquid in 0.42% Potassium phosphate, 0.87% Sodium chloride, pH 7.3, 30% glycerol, and 0.01% sodium azide.
Alternative Names	TOB; TROB1; Protein Tob1; Transducer of erbB-2 1
Gene Symbol	TOB1
Entrez Gene	10140(Human); 22057(Mouse)
SwissProt	P50616(Human); Q61471(Mouse); Q8R5K6(Rat)

*AREX continuously optimizes our products. Webpage content may not reflect the latest updates. For inquiries, please contact info@arexbio.com or your local distributor.

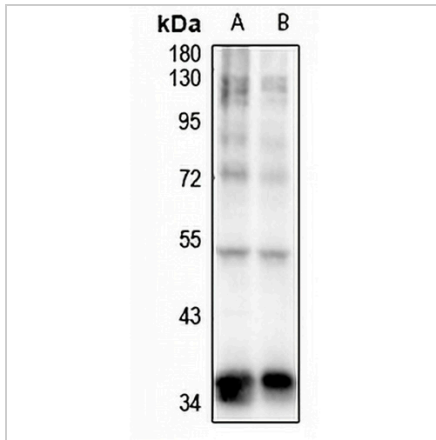
*Clone Number, Reactivity, Source/Host and Clonality can be found in the product name and Key Features section above.

DATASHEET

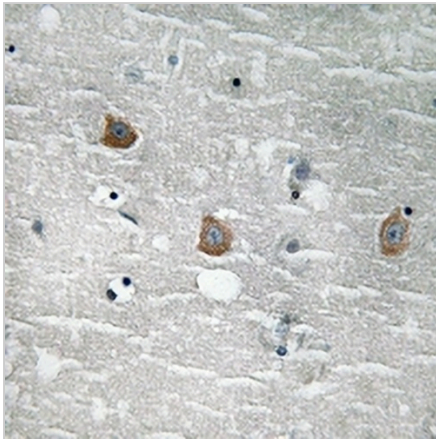
TOB (Phospho-S164) Rabbit Polyclonal Antibody

CAT. NO. APA11226

DATA



Western blot analysis of TOB (Phospho-S164) expression in HEK293T (A), H1792 (B) whole cell lysates. (Predicted band size: 38 kD; Observed band size: 38 kD)



Immunohistochemical analysis of TOB (Phospho-S164) staining in human brain formalin fixed paraffin embedded tissue section. The section was pre-treated using heat mediated antigen retrieval with sodium citrate buffer (pH 6.0). The section was then incubated with the antibody at room temperature and detected using an HRP conjugated compact polymer system. DAB was used as the chromogen. The section was then counterstained with haematoxylin and mounted with DPX.

STORAGE

Store at 4°C short term. For long term storage, store at -20°C, avoiding freeze/thaw cycles.

NOTE

For Research Use Only. Not for diagnostic, therapeutics, prophylactic or in vivo use.