

DATASHEET

LRP6 (Phospho-T1479) Rabbit Polyclonal Antibody

CAT. NO. APA11229

KEY FEATURES

| | | | |
|---------------|---|---------------|---------------------|
| Target | LRP6 (Phospho-T1479) | Source / Host | Rabbit |
| Reactivity | Human, Mouse | Clonality | Polyclonal |
| Applications | WB, IF/ICC | Conjugation | Unconjugated |
| Form / Buffer | Liquid in 0.42% Potassium phosphate, 0.87% Sodium chloride, pH 7.3, 30% glycerol, and 0.01% sodium azide. | | Storage at -20°C |

BACKGROUND

Component of the Wnt-Fzd-LRP5-LRP6 complex that triggers beta-catenin signaling through inducing aggregation of receptor-ligand complexes into ribosome-sized signalosomes . Cell-surface coreceptor of Wnt/beta-catenin signaling, which plays a pivotal role in various processes including retinal angiogenesis and bone formation . The Wnt-induced Fzd/LRP6 coreceptor complex recruits DVL1 polymers to the plasma membrane which, in turn, recruits the AXIN1/GSK3B-complex to the cell surface promoting the formation of signalosomes and inhibiting AXIN1/GSK3-mediated phosphorylation and destruction of beta-catenin . Required for posterior patterning of the epiblast during gastrulation .

APPLICATION

To ensure optimal assay performance, AREX recommends conducting reagent titration tailored to each testing system for optimal detection results.

| | |
|--------|----------------|
| WB | 1:500 - 1:1000 |
| IF/ICC | 1:50 - 1:200 |

*Results are sample-specific. Please refer to your local assay conditions and test parameters for reference.

PRODUCT OVERVIEW

| | |
|-------------------|---|
| Description | Rabbit polyclonal antibody to LRP6 (Phospho-T1479) |
| Specificity | Recognizes endogenous levels of LRP6 protein only when phosphorylated at T1479. |
| Antibody Type | Primary antibody |
| Immunogen | KLH-conjugated synthetic phosphopeptide corresponding to residues surrounding T1479 of human LRP6 protein. The exact sequence is proprietary. |
| Purification | The antibody was purified by immunogen affinity chromatography. |
| Molecular Weight | Predicted: 180 kD; Observed: 210 kD |
| Form/Buffer | Liquid in 0.42% Potassium phosphate, 0.87% Sodium chloride, pH 7.3, 30% glycerol, and 0.01% sodium azide. |
| Alternative Names | Low-density lipoprotein receptor-related protein 6; LRP-6 |
| Gene Symbol | LRP6 |
| Entrez Gene | 4040(Human); 16974(Mouse) |
| SwissProt | O75581(Human); O88572(Mouse) |

*AREX continuously optimizes our products. Webpage content may not reflect the latest updates. For inquiries, please contact info@arexbio.com or your local distributor.

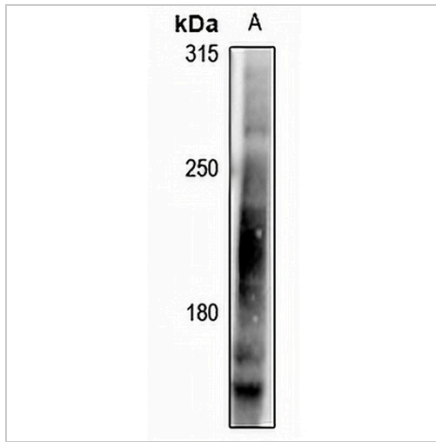
*Clone Number, Reactivity, Source/Host and Clonality can be found in the product name and Key Features section above.

DATASHEET

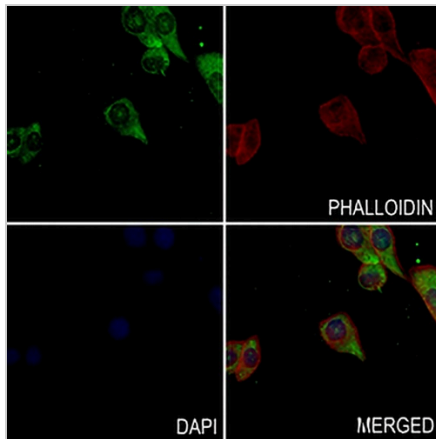
LRP6 (Phospho-T1479) Rabbit Polyclonal Antibody

CAT. NO. APA11229

DATA



Western blot analysis of LRP6 (Phospho-T1479) expression in A375 (A) whole cell lysates. (Predicted band size: 180 kD; Observed band size: 210 kD)



Immunofluorescent analysis of LRP6 (Phospho-T1479) staining in MCF7 cells. Formalin-fixed cells were permeabilized with 0.1% Triton X-100 in TBS for 5-10 minutes and blocked with 3% BSA-PBS for 30 minutes at room temperature. Cells were probed with the primary antibody in 3% BSA-PBS and incubated overnight at 4 °C in a humidified chamber. Cells were washed with PBST and incubated with a AREX® Fluor 488 - conjugated secondary antibody (green) in PBS at room temperature in the dark. Phalloidin - AREX® Fluor 594 was used to stain Actin filaments (red). DAPI was used to stain the cell nuclei (blue).

STORAGE

Store at 4°C short term. For long term storage, store at -20°C, avoiding freeze/thaw cycles.

NOTE

For Research Use Only. Not for diagnostic, therapeutics, prophylactic or in vivo use.