

DATASHEET

GABBR2 (Phospho-S893) Rabbit Polyclonal Antibody

CAT. NO. APA11231

KEY FEATURES

Target	GABBR2 (Phospho-S893)	Source / Host	Rabbit
Reactivity	Human, Mouse, Rat	Clonality	Polyclonal
Applications	WB, IF/ICC	Conjugation	Unconjugated
Form / Buffer	Liquid in 0.42% Potassium phosphate, 0.87% Sodium chloride, pH 7.3, 30% glycerol, and 0.01% sodium azide.		Storage at-20°C

BACKGROUND

Component of a heterodimeric G-protein coupled receptor for GABA, formed by GABBR1 and GABBR2 . Within the heterodimeric GABA receptor, only GABBR1 seems to bind agonists, while GABBR2 mediates coupling to G proteins . Ligand binding causes a conformation change that triggers signaling via guanine nucleotide-binding proteins (G proteins) and modulates the activity of down-stream effectors, such as adenylate cyclase . Signaling inhibits adenylate cyclase, stimulates phospholipase A2, activates potassium channels, inactivates voltage-dependent calcium-channels and modulates inositol phospholipid hydrolysis . Plays a critical role in the fine-tuning of inhibitory synaptic transmission .

APPLICATION

To ensure optimal assay performance, AREX recommends conducting reagent titration tailored to each testing system for optimal detection results.

WB	1:500 - 1:1000
IF/ICC	1:50 - 1:200

*Results are sample-specific. Please refer to your local assay conditions and test parameters for reference.

PRODUCT OVERVIEW

Description	Rabbit polyclonal antibody to GABBR2 (Phospho-S893)
Specificity	Recognizes endogenous levels of GABBR2 protein only when phosphorylated at S893.
Antibody Type	Primary antibody
Immunogen	KLH-conjugated synthetic phosphopeptide corresponding to residues surrounding S893 of human GABBR2 protein. The exact sequence is proprietary.
Purification	The antibody was purified by immunogen affinity chromatography.
Molecular Weight	Predicted: 105 kD; Observed: 105 kD
Form/Buffer	Liquid in 0.42% Potassium phosphate, 0.87% Sodium chloride, pH 7.3, 30% glycerol, and 0.01% sodium azide.
Alternative Names	GPR51; GPRC3B; Gamma-aminobutyric acid type B receptor subunit 2; GABA-B receptor 2; GABA-B-R2; GABA-BR2; GABABR2; Gb2; G-protein coupled receptor 51; HG20
Gene Symbol	GABBR2
Entrez Gene	9568(Human); 242425(Mouse); 83633(Rat)
SwissProt	O75899(Human); Q80T41(Mouse); O88871(Rat)

*AREX continuously optimizes our products. Webpage content may not reflect the latest updates. For inquiries, please contact info@arexbio.com or your local distributor.

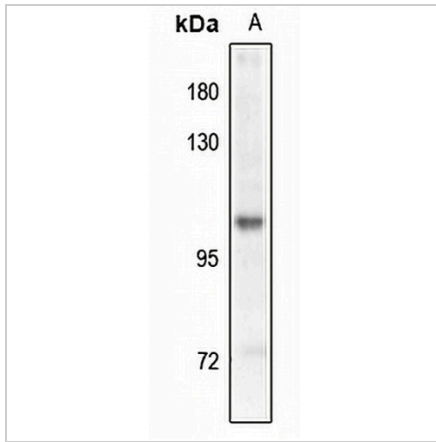
*Clone Number, Reactivity, Source/Host and Clonality can be found in the product name and Key Features section above.

DATASHEET

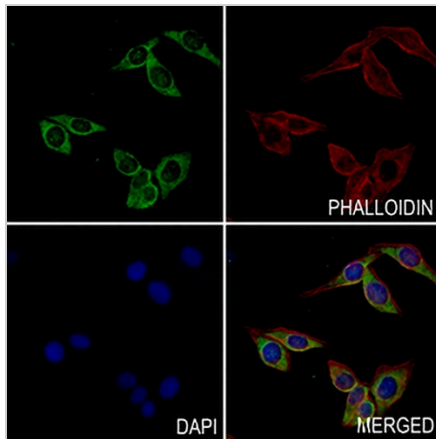
GABBR2 (Phospho-S893) Rabbit Polyclonal Antibody

CAT. NO. APA11231

DATA



Western blot analysis of GABBR2 (Phospho-S893) expression in U87MG (A) whole cell lysates. (Predicted band size: 105 kD; Observed band size: 105 kD)



Immunofluorescent analysis of GABBR2 (Phospho-S893) staining in MCF7 cells. Formalin-fixed cells were permeabilized with 0.1% Triton X-100 in TBS for 5-10 minutes and blocked with 3% BSA-PBS for 30 minutes at room temperature. Cells were probed with the primary antibody in 3% BSA-PBS and incubated overnight at 4 °C in a hidified chamber. Cells were washed with PBST and incubated with a AREX® Fluor 488 - conjugated secondary antibody (green) in PBS at room temperature in the dark. Phalloidin - AREX® Fluor 594 was used to stain Actin filaments (red). DAPI was used to stain the cell nuclei (blue).

STORAGE

Store at 4°C short term. For long term storage, store at -20°C, avoiding freeze/thaw cycles.

NOTE

For Research Use Only. Not for diagnostic, therapeutics, prophylactic or in vivo use.