

**DATASHEET**

**Alpha-2B Adrenergic Receptor Rabbit Polyclonal Antibody**

CAT. NO. APA11282

**KEY FEATURES**

Target	Alpha-2B Adrenergic Receptor	Source / Host	Rabbit
Reactivity	Human, Rat	Clonality	Polyclonal
Applications	WB, IHC, IF/ICC	Conjugation	Unconjugated
Form / Buffer	Liquid in 0.42% Potassium phosphate, 0.87% Sodium chloride, pH 7.3, 30% glycerol, and 0.01% sodium azide.		Storage at-20°C

**BACKGROUND**

Alpha-2 adrenergic receptors are G protein-coupled receptors for catecholamines that activate G(i/o) protein pathway, thereby promoting adenylyl cyclase inhibition, ERK1/2 stimulation, and voltage-gated calcium channels suppression protein pathway, thereby promoting adenylyl cyclase inhibition, ERK1/2 stimulation, and voltage-gated calcium channels suppression . Control a variety of physiological processes, such as regulation of blood pressure, lipolysis and insulin release . The rank order of potency for agonists of ADRA2B is clonidine > norepinephrine > epinephrine = oxymetazoline > dopamine > p-tyramine = phenylephrine > serotonin > p-synephrine / p-octopamine.

**APPLICATION**

To ensure optimal assay performance, AREX recommends conducting reagent titration tailored to each testing system for optimal detection results.

WB	1:500 - 1:1000
IHC	1:50 - 1:100
IF/ICC	1:50 - 1:200

\*Results are sample-specific. Please refer to your local assay conditions and test parameters for reference.

**PRODUCT OVERVIEW**

Description	Rabbit polyclonal antibody to Alpha-2B Adrenergic Receptor
Specificity	Recognizes endogenous levels of Alpha-2B Adrenergic Receptor protein.
Antibody Type	Primary antibody
Immunogen	KLH-conjugated synthetic peptide encompassing a sequence within the center region of human Alpha-2B Adrenergic Receptor. The exact sequence is proprietary.
Purification	The antibody was purified by immunogen affinity chromatography.
Molecular Weight	Predicted: 49 kD; Observed: 62 kD
Form/Buffer	Liquid in 0.42% Potassium phosphate, 0.87% Sodium chloride, pH 7.3, 30% glycerol, and 0.01% sodium azide.
Alternative Names	ADRA2L1; ADRA2RL1; Alpha-2B adrenergic receptor; Alpha-2 adrenergic receptor subtype C2; Alpha-2B adrenoreceptor; Alpha-2B adrenoceptor; Alpha-2BAR
Gene Symbol	ADRA2B
Entrez Gene	151(Human); 24174(Rat)
SwissProt	P18089(Human); P19328(Rat)

\*AREX continuously optimizes our products. Webpage content may not reflect the latest updates. For inquiries, please contact [info@arexbio.com](mailto:info@arexbio.com) or your local distributor.

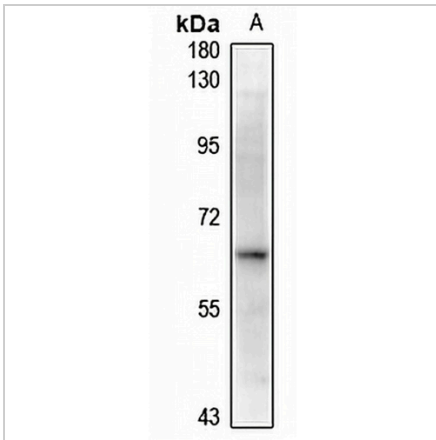
\*Clone Number, Reactivity, Source/Host and Clonality can be found in the product name and Key Features section above.

**DATASHEET**

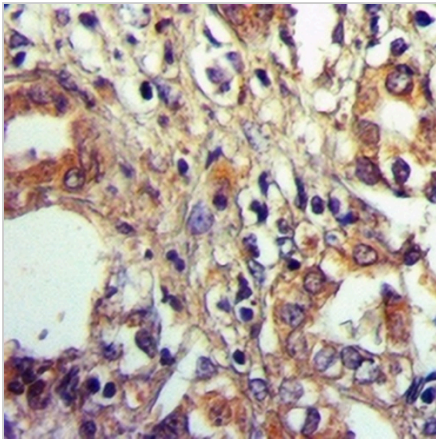
**Alpha-2B Adrenergic Receptor Rabbit Polyclonal Antibody**

CAT. NO. APA11282

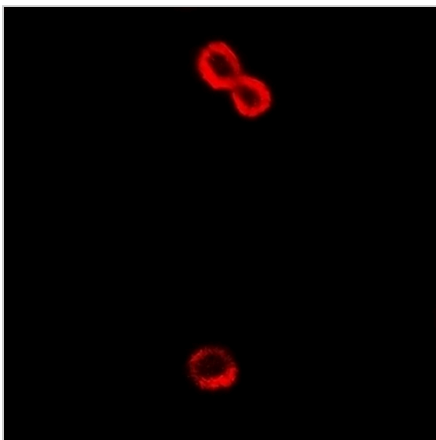
**DATA**



Western blot analysis of Alpha-2B Adrenergic Receptor expression in HeLa (A) whole cell lysates. (Predicted band size: 49 kD; Observed band size: 62 kD)



Immunohistochemical analysis of Alpha-2B Adrenergic Receptor staining in human kidney cancer formalin fixed paraffin embedded tissue section. The section was pre-treated using heat mediated antigen retrieval with sodium citrate buffer (pH 6.0). The section was then incubated with the antibody at room temperature and detected using an HRP conjugated compact polymer system. DAB was used as the chromogen. The section was then counterstained with haematoxylin and mounted with DPX.



Immunofluorescent analysis of Alpha-2B Adrenergic Receptor staining in HepG2 cells. Formalin-fixed cells were permeabilized with 0.1% Triton X-100 in TBS for 5-10 minutes and blocked with 3% BSA-PBS for 30 minutes at room temperature. Cells were probed with the primary antibody in 3% BSA-PBS and incubated overnight at 4 °C in a humidified chamber. Cells were washed with PBST and incubated with a Alexa Fluor 594-conjugated secondary antibody (red) in PBS at room temperature in the dark.

**STORAGE**

Store at 4°C short term. For long term storage, store at -20°C, avoiding freeze/thaw cycles.

**NOTE**

For Research Use Only. Not for diagnostic, therapeutics, prophylactic or in vivo use.