

DATASHEET

WTAP Rabbit Polyclonal Antibody

CAT. NO. APA11293

KEY FEATURES

Target	WTAP	Source / Host	Rabbit
Reactivity	Human, Mouse, Rat	Clonality	Polyclonal
Applications	WB, IHC	Conjugation	Unconjugated
Form / Buffer	Liquid in 0.42% Potassium phosphate, 0.87% Sodium chloride, pH 7.3, 30% glycerol, and 0.01% sodium azide.		Storage at -20°C

BACKGROUND

Associated component of the WMM complex, a complex that mediates N6-methyladenosine (m6A) methylation of RNAs, a modification that plays a role in the efficiency of mRNA splicing and RNA processing methylation of RNAs, a modification that plays a role in the efficiency of mRNA splicing and RNA processing . Required for accumulation of METTL3 and METTL14 to nuclear speckle . Acts as a mRNA splicing regulator . Regulates G2/M cell-cycle transition by binding to the 3' UTR of CCNA2, which enhances its stability . Impairs WT1 DNA-binding ability and inhibits expression of WT1 target genes .

APPLICATION

To ensure optimal assay performance, AREX recommends conducting reagent titration tailored to each testing system for optimal detection results.

WB	1:500 - 1:1000
IHC	1:50 - 1:200

*Results are sample-specific. Please refer to your local assay conditions and test parameters for reference.

PRODUCT OVERVIEW

Description	Rabbit polyclonal antibody to WTAP
Specificity	Recognizes endogenous levels of WTAP protein.
Antibody Type	Primary antibody
Immunogen	KLH-conjugated synthetic peptide encompassing a sequence within the C-term region of human WTAP. The exact sequence is proprietary.
Purification	The antibody was purified by immunogen affinity chromatography.
Molecular Weight	Predicted: 44 kD; Observed: 55 kD
Form/Buffer	Liquid in 0.42% Potassium phosphate, 0.87% Sodium chloride, pH 7.3, 30% glycerol, and 0.01% sodium azide.
Alternative Names	KIAA0105; Pre-mRNA-splicing regulator WTAP; Female-lethal(2)D homolog; hFL(2)D; WT1-associated protein; Wilms tumor 1-associating protein
Gene Symbol	WTAP
Entrez Gene	9589(Human); 60532(Mouse)
SwissProt	Q15007(Human); Q9ER69(Mouse)

*AREX continuously optimizes our products. Webpage content may not reflect the latest updates. For inquiries, please contact info@arexbio.com or your local distributor.

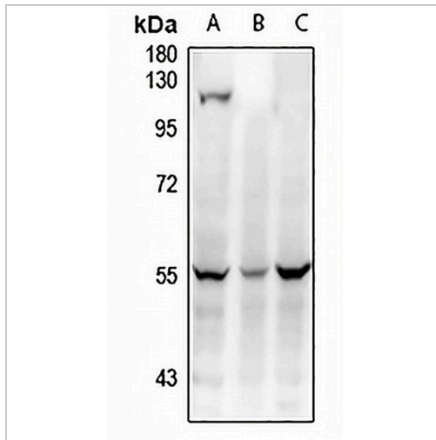
*Clone Number, Reactivity, Source/Host and Clonality can be found in the product name and Key Features section above.

DATASHEET

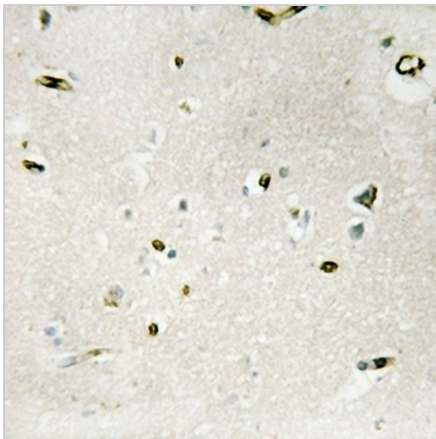
WTAP Rabbit Polyclonal Antibody

CAT. NO. APA11293

DATA



Western blot analysis of WTAP expression in MEF (A), EC9706 (B), Panc1 (C) whole cell lysates. (Predicted band size: 44 kD; Observed band size: 55 kD)



Immunohistochemical analysis of WTAP staining in human brain formalin fixed paraffin embedded tissue section. The section was pre-treated using heat mediated antigen retrieval with sodium citrate buffer (pH 6.0). The section was then incubated with the antibody at room temperature and detected using an HRP conjugated compact polymer system. DAB was used as the chromogen. The section was then counterstained with haematoxylin and mounted with DPX.

STORAGE

Store at 4°C short term. For long term storage, store at -20°C, avoiding freeze/thaw cycles.

NOTE

For Research Use Only. Not for diagnostic, therapeutics, prophylactic or in vivo use.