

**DATASHEET**

**MEKK15 Rabbit Polyclonal Antibody**

CAT. NO. APA11294

**KEY FEATURES**

Target	MEKK15	Source / Host	Rabbit
Reactivity	Human, Mouse, Rat	Clonality	Polyclonal
Applications	WB	Conjugation	Unconjugated
Form / Buffer	Liquid in 0.42% Potassium phosphate, 0.87% Sodium chloride, pH 7.3, 30% glycerol, and 0.01% sodium azide.		Storage at-20°C

**BACKGROUND**

Serine/threonine kinase which acts as a component of the MAP kinase signal transduction pathway . Once activated, acts as an upstream activator of the p38 MAPK signal transduction cascade through the phosphorylation and activation of several MAP kinase kinases . May function in a signal transduction pathway that is activated by various cell stresses and leads to apoptosis . Involved in phosphorylation of WNK4 in response to osmotic stress or hypotonic low-chloride stimulation via the p38 MAPK signal transduction cascade .

**APPLICATION**

To ensure optimal assay performance, AREX recommends conducting reagent titration tailored to each testing system for optimal detection results.

WB	1:500 - 1:1000
----	----------------

\*Results are sample-specific. Please refer to your local assay conditions and test parameters for reference.

**PRODUCT OVERVIEW**

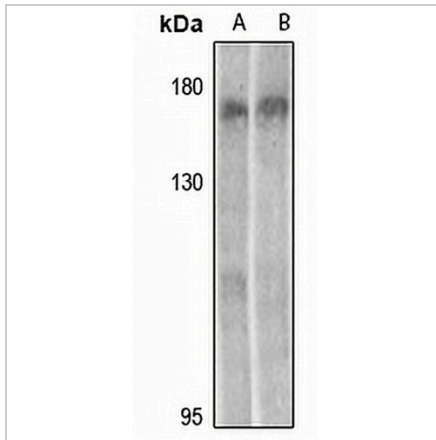
Description	Rabbit polyclonal antibody to MEKK15
Specificity	Recognizes endogenous levels of MEKK15 protein.
Antibody Type	Primary antibody
Immunogen	KLH-conjugated synthetic peptide encompassing a sequence within the C-term region of human MEKK15. The exact sequence is proprietary.
Purification	The antibody was purified by immunogen affinity chromatography.
Molecular Weight	Predicted: 147 kD; Observed: 150 kD
Form/Buffer	Liquid in 0.42% Potassium phosphate, 0.87% Sodium chloride, pH 7.3, 30% glycerol, and 0.01% sodium azide.
Alternative Names	ASK3; Mitogen-activated protein kinase kinase kinase 15; Apoptosis signal-regulating kinase 3; MAPK/ERK kinase kinase 15; MEK kinase 15; MEKK 15
Gene Symbol	MAP3K15
Entrez Gene	389840(Human); 270672(Mouse)
SwissProt	Q6ZN16(Human); A2AQW0(Mouse)

\*AREX continuously optimizes our products. Webpage content may not reflect the latest updates. For inquiries, please contact [info@arexbio.com](mailto:info@arexbio.com) or your local distributor.

\*Clone Number, Reactivity, Source/Host and Clonality can be found in the product name and Key Features section above.

**DATASHEET****MEKK15 Rabbit Polyclonal Antibody**

CAT. NO. APA11294

**DATA**

Western blot analysis of MEKK15 expression in C6 (A), BV2 (B) whole cell lysates.  
(Predicted band size: 147 kD; Observed band size: 150 kD)

**STORAGE**

Store at 4°C short term. For long term storage, store at -20°C, avoiding freeze/thaw cycles.

**NOTE**

For Research Use Only. Not for diagnostic, therapeutics, prophylactic or in vivo use.