

DATASHEET

HPK1 Rabbit Polyclonal Antibody

CAT. NO. APA11296

KEY FEATURES

| | | | |
|---------------|---|---------------|--------------------|
| Target | HPK1 | Source / Host | Rabbit |
| Reactivity | Human, Mouse, Bovine, Dog, Monkey, Pig | Clonality | Polyclonal |
| Applications | WB | Conjugation | Unconjugated |
| Form / Buffer | Liquid in 0.42% Potassium phosphate, 0.87% Sodium chloride, pH 7.3, 30% glycerol, and 0.01% sodium azide. | | Storage at-20°C |

BACKGROUND

Serine/threonine-protein kinase, which plays a role in the response to environmental stress . Appears to act upstream of the JUN N-terminal pathway . Activator of the Hippo signaling pathway which plays a pivotal role in organ size control and tumor suppression by restricting proliferation and promoting apoptosis. MAP4Ks act in parallel to and are partially redundant with STK3/MST2 and STK4/MST2 in the phosphorylation and activation of LATS1/2, and establish MAP4Ks as components of the expanded Hippo pathway . May play a role in hematopoietic lineage decisions and growth regulation . Together with CLNK, it enhances CD3-triggered activation of T-cells and subsequent IL2 production .

APPLICATION

To ensure optimal assay performance, AREX recommends conducting reagent titration tailored to each testing system for optimal detection results.

| | |
|----|----------------|
| WB | 1:500 - 1:1000 |
|----|----------------|

*Results are sample-specific. Please refer to your local assay conditions and test parameters for reference.

PRODUCT OVERVIEW

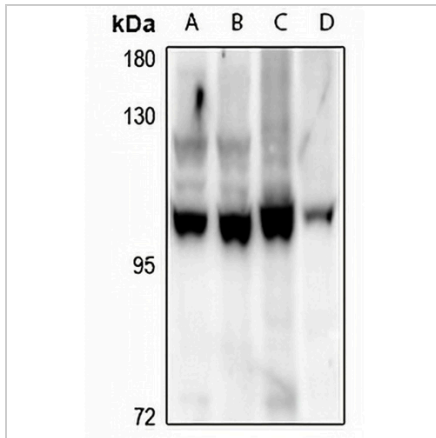
| | |
|-------------------|---|
| Description | Rabbit polyclonal antibody to HPK1 |
| Specificity | Recognizes endogenous levels of HPK1 protein. |
| Antibody Type | Primary antibody |
| Immunogen | KLH-conjugated synthetic peptide encompassing a sequence within the center region of human HPK1. The exact sequence is proprietary. |
| Purification | The antibody was purified by immunogen affinity chromatography. |
| Molecular Weight | Predicted: 91 kD; Observed: 97 kD |
| Form/Buffer | Liquid in 0.42% Potassium phosphate, 0.87% Sodium chloride, pH 7.3, 30% glycerol, and 0.01% sodium azide. |
| Alternative Names | HPK1; Mitogen-activated protein kinase kinase kinase 1; Hematopoietic progenitor kinase; MAPK/ERK kinase kinase 1; MEK kinase kinase 1; MEKKK 1 |
| Gene Symbol | MAP4K1 |
| Entrez Gene | 11184(Human); 26411(Mouse) |
| SwissProt | Q92918(Human); P70218(Mouse) |

*AREX continuously optimizes our products. Webpage content may not reflect the latest updates. For inquiries, please contact info@arexbio.com or your local distributor.

*Clone Number, Reactivity, Source/Host and Clonality can be found in the product name and Key Features section above.

DATASHEET**HPK1 Rabbit Polyclonal Antibody**

CAT. NO. APA11296

DATA

Western blot analysis of HPK1 expression in A549 (A), Myla2059 (B), Jurkat (C), SP20 (D) whole cell lysates. (Predicted band size: 91 kD; Observed band size: 97 kD)

STORAGE

Store at 4°C short term. For long term storage, store at -20°C, avoiding freeze/thaw cycles.

NOTE

For Research Use Only. Not for diagnostic, therapeutics, prophylactic or in vivo use.