

**DATASHEET**

**BWR1A Rabbit Polyclonal Antibody**

CAT. NO. APA11298

**KEY FEATURES**

Target	BWR1A	Source / Host	Rabbit
Reactivity	Human, Mouse, Rat, Monkey	Clonality	Polyclonal
Applications	WB, IF/ICC	Conjugation	Unconjugated
Form / Buffer	Liquid in 0.42% Potassium phosphate, 0.87% Sodium chloride, pH 7.3, 30% glycerol, and 0.01% sodium azide.		Storage at-20°C

**BACKGROUND**

May act as a transporter of organic cations based on a proton efflux antiport mechanism. May play a role in the transport of chloroquine and quinidine-related compounds in kidney . Plays a role in the regulation of lipid metabolism .

**APPLICATION**

To ensure optimal assay performance, AREX recommends conducting reagent titration tailored to each testing system for optimal detection results.

WB	1:500 - 1:1000
IF/ICC	1:100 - 1:500

\*Results are sample-specific. Please refer to your local assay conditions and test parameters for reference.

**PRODUCT OVERVIEW**

Description	Rabbit polyclonal antibody to BWR1A
Specificity	Recognizes endogenous levels of BWR1A protein.
Antibody Type	Primary antibody
Immunogen	KLH-conjugated synthetic peptide encompassing a sequence within the C-term region of human BWR1A. The exact sequence is proprietary.
Purification	The antibody was purified by immunogen affinity chromatography.
Molecular Weight	Predicted: 44 kD; Observed: 40; 44 kD
Form/Buffer	Liquid in 0.42% Potassium phosphate, 0.87% Sodium chloride, pH 7.3, 30% glycerol, and 0.01% sodium azide.
Alternative Names	BWR1A; BWSCR1A; HET; IMPT1; ITM; ORCTL2; SLC22A1L; TSSC5; Solute carrier family 22 member 18; Beckwith-Wiedemann syndrome chromosomal region 1 candidate gene A protein; Efflux transporter-like protein; Imprinted multi-membrane-spanning polyspecific transporter-related protein 1; Organic cation transporter-like protein 2; ORCTL-2; Solute carrier family 22 member 1-like; Tumor-suppressing STF cDNA 5 protein; Tumor-suppressing subchromosomal transferable fragment candidate gene 5 protein; p45-Beckwith-Wiedemann region 1 A; p45-BWR1A
Gene Symbol	SLC22A18
Entrez Gene	5002(Human); 18400(Mouse); 309131(Rat)
SwissProt	Q96BI1(Human); Q78KK3(Mouse); Q6AY78(Rat)

\*AREX continuously optimizes our products. Webpage content may not reflect the latest updates. For inquiries, please contact [info@arexbio.com](mailto:info@arexbio.com) or your local distributor.

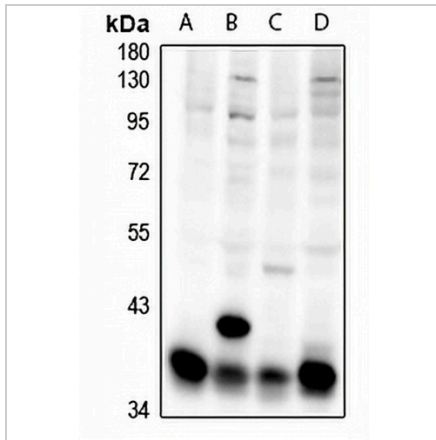
\*Clone Number, Reactivity, Source/Host and Clonality can be found in the product name and Key Features section above.

**DATASHEET**

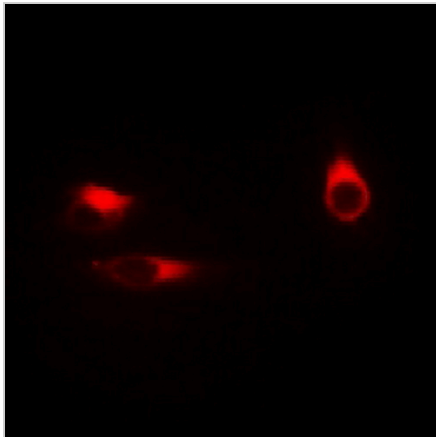
**BWR1A Rabbit Polyclonal Antibody**

CAT. NO. APA11298

**DATA**



Western blot analysis of BWR1A expression in C6 (A), CT26 (B), HeLa (C), A2780 (D) whole cell lysates. (Predicted band size: 44 kD; Observed band size: 40; 44 kD)



Immunofluorescent analysis of BWR1A staining in HeLa cells. Formalin-fixed cells were permeabilized with 0.1% Triton X-100 in TBS for 5-10 minutes and blocked with 3% BSA-PBS for 30 minutes at room temperature. Cells were probed with the primary antibody in 3% BSA-PBS and incubated overnight at 4 °C in a humidified chamber. Cells were washed with PBST and incubated with a Alexa Fluor 594-conjugated secondary antibody (red) in PBS at room temperature in the dark.

**STORAGE**

Store at 4°C short term. For long term storage, store at -20°C, avoiding freeze/thaw cycles.

**NOTE**

For Research Use Only. Not for diagnostic, therapeutics, prophylactic or in vivo use.