

**DATASHEET**

**FOXB1/2 Rabbit Polyclonal Antibody**

CAT. NO. APA11299

**KEY FEATURES**

Target	FOXB1/2	Source / Host	Rabbit
Reactivity	Human, Mouse, Rat, Zebrafish	Clonality	Polyclonal
Applications	WB, IHC, IF/ICC	Conjugation	Unconjugated
Form / Buffer	Liquid in 0.42% Potassium phosphate, 0.87% Sodium chloride, pH 7.3, 30% glycerol, and 0.01% sodium azide.		Storage at-20°C

**BACKGROUND**

Transcription factor expressed by neural progenitor cells in specific regions of the embryonic neuroepithelium. Essential for the mammillary nuclei maintenance. Negatively regulates the proliferation of oligodendrocyte progenitors and promotes oligodendrocyte maturation. Also expressed in mammary glands, plays a role in lactation, controls development of mammary glands and the inferior colliculi of the midbrain in the central nervous system that regulates the milk-ejection reflex.

**APPLICATION**

To ensure optimal assay performance, AREX recommends conducting reagent titration tailored to each testing system for optimal detection results.

WB	1:500 - 1:1000
IHC	1:50 - 1:200
IF/ICC	1:50 - 1:200

\*Results are sample-specific. Please refer to your local assay conditions and test parameters for reference.

**PRODUCT OVERVIEW**

Description	Rabbit polyclonal antibody to FOXB1/2
Specificity	Recognizes endogenous levels of FOXB1/2 protein.
Antibody Type	Primary antibody
Immunogen	KLH-conjugated synthetic peptide encompassing a sequence within the center region of human FOXB1/2. The exact sequence is proprietary.
Purification	The antibody was purified by immunogen affinity chromatography.
Molecular Weight	Predicted: 34; Observed: 40 kD
Form/Buffer	Liquid in 0.42% Potassium phosphate, 0.87% Sodium chloride, pH 7.3, 30% glycerol, and 0.01% sodium azide.
Alternative Names	FOXB1; FKHS; Forkhead box protein B1; Transcription factor FKH-5; FOXB2; Forkhead box protein B2
Gene Symbol	FOXB1; FOXB2
Entrez Gene	27023; 442425(Human); 64290; 14240(Mouse)
SwissProt	Q99853; Q5VYV0(Human); Q64732; Q64733(Mouse)

\*AREX continuously optimizes our products. Webpage content may not reflect the latest updates. For inquiries, please contact [info@arexbio.com](mailto:info@arexbio.com) or your local distributor.

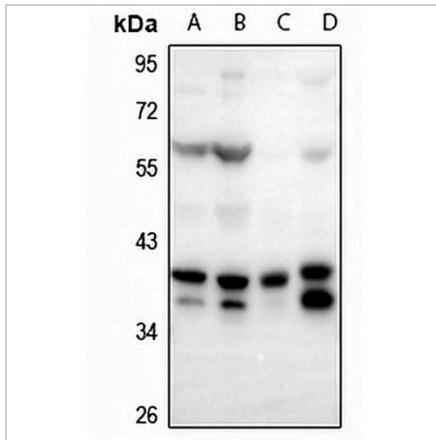
\*Clone Number, Reactivity, Source/Host and Clonality can be found in the product name and Key Features section above.

**DATASHEET**

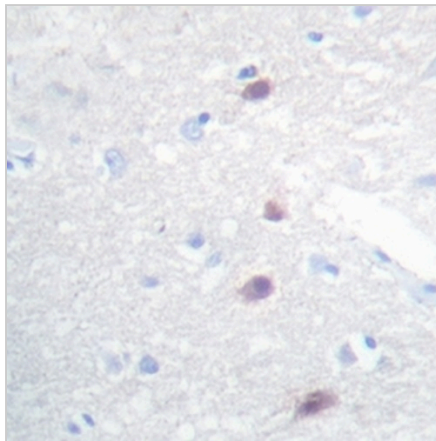
**FOXB1/2 Rabbit Polyclonal Antibody**

CAT. NO. APA11299

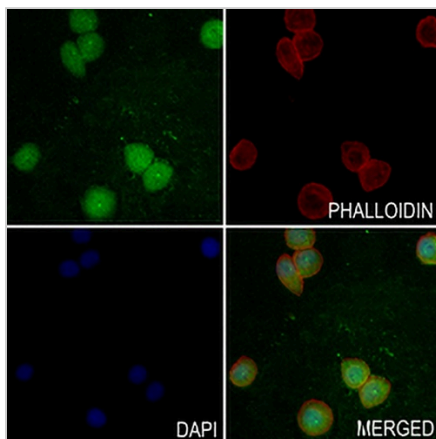
**DATA**



Western blot analysis of FOXB1/2 expression in SG7901 (A), Myla2059 (B), mouse embryo (C), rat testis (D) whole cell lysates. (Predicted band size: 34; 45 kD; Observed band size: 40 kD)



Immunohistochemical analysis of FOXB1/2 staining in human brain formalin fixed paraffin embedded tissue section. The section was pre-treated using heat mediated antigen retrieval with sodium citrate buffer (pH 6.0). The section was then incubated with the antibody at room temperature and detected using an HRP conjugated compact polymer system. DAB was used as the chromogen. The section was then counterstained with haematoxylin and mounted with DPX.



Immunofluorescent analysis of FOXB1/2 staining in MCF7 cells. Formalin-fixed cells were permeabilized with 0.1% Triton X-100 in TBS for 5-10 minutes and blocked with 3% BSA-PBS for 30 minutes at room temperature. Cells were probed with the primary antibody in 3% BSA-PBS and incubated overnight at 4 °C in a humidified chamber. Cells were washed with PBST and incubated with a AREX® Fluor 488 -conjugated secondary antibody (green) in PBS at room temperature in the dark. Phalloidin - AREX® Fluor 594 was used to stain Actin filaments (red). DAPI was used to stain the cell nuclei (blue).

**STORAGE**

Store at 4°C short term. For long term storage, store at -20°C, avoiding freeze/thaw cycles.

**NOTE**

For Research Use Only. Not for diagnostic, therapeutics, prophylactic or in vivo use.