

DATASHEET

Cytochrome P450 2C8/9/18/19 Rabbit Polyclonal Antibody

CAT. NO. APA11305

KEY FEATURES

Target	Cytochrome P450 2C8/9/18/19	Source / Host	Rabbit
Reactivity	Human, Mouse, Rat, Bovine, Monkey	Clonality	Polyclonal
Applications	WB, IHC, IF/ICC	Conjugation	Unconjugated
Form / Buffer	Liquid in 0.42% Potassium phosphate, 0.87% Sodium chloride, pH 7.3, 30% glycerol, and 0.01% sodium azide.		Storage at -20°C

BACKGROUND

A cytochrome P450 monooxygenase involved in the metabolism of various endogenous substrates, including fatty acids, steroid hormones and vitamins. Mechanistically, uses molecular oxygen inserting one oxygen atom into a substrate, and reducing the second into a water molecule, with two electrons provided by NADPH via cytochrome P450 reductase (NADPH-hemoprotein reductase). Primarily catalyzes the epoxidation of double bonds of polyunsaturated fatty acids (PUFA) with a preference for the last double bond. Catalyzes the hydroxylation of carbon-hydrogen bonds. Metabolizes all trans-retinoic acid toward its 4-hydroxylated form. Displays 16-alpha hydroxylase activity toward estrogen steroid hormones, 17beta-estradiol (E2) and estrone (E1).

APPLICATION

To ensure optimal assay performance, AREX recommends conducting reagent titration tailored to each testing system for optimal detection results.

WB	1:500 - 1:1000
IHC	1:50 - 1:200
IF/ICC	1:100 - 1:500

*Results are sample-specific. Please refer to your local assay conditions and test parameters for reference.

PRODUCT OVERVIEW

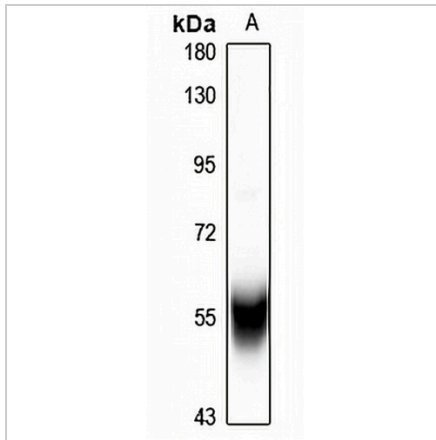
Description	Rabbit polyclonal antibody to Cytochrome P450 2C8/9/18/19
Specificity	Recognizes endogenous levels of Cytochrome P450 2C8/9/18/19 protein.
Antibody Type	Primary antibody
Immunogen	KLH-conjugated synthetic peptide encompassing a sequence within the center region of human Cytochrome P450 2C8/9/18/19. The exact sequence is proprietary.
Purification	The antibody was purified by immunogen affinity chromatography.
Molecular Weight	Predicted: 55 kD; Observed: 56 kD
Form/Buffer	Liquid in 0.42% Potassium phosphate, 0.87% Sodium chloride, pH 7.3, 30% glycerol, and 0.01% sodium azide.
Alternative Names	CYP2C8; Cytochrome P450 2C8; CYIIC8; Cytochrome P450 IIC2; Cytochrome P450 MP-12; Cytochrome P450 MP-20; Cytochrome P450 form 1; S-mephenytoin 4-hydroxylase; CYP2C9; CYP2C10; Cytochrome P450 2C9; (R)-limonene 6-monooxygenase; (S)-limonene 6-monooxygenase; (S)-limonene 7-monooxygenase; CYIIC9; Cytochrome P-450MP; Cytochrome P450 MP-4; Cytochrome P450 MP-8; Cytochrome P450 PB-1; S-mephenytoin 4-hydroxylase; CYP2C18; Cytochrome P450 2C18; CYIIC18; Cytochrome P450-6b/29c; CYP2C19; Cytochrome P450 2C19; (R)-limonene 6-monooxygenase; (S)-limonene 6-monooxygenase; (S)-limonene 7-monooxygenase; CYIIC17; CYIIC19; Cytochrome P450-11A; Cytochrome P450-254C; Mephenytoin 4-hydroxylase
Gene Symbol	CYP2C8; CYP2C9; CYP2C18; CYP2C19
Entrez Gene	1562; 1558; 1559; 1557(Human)

DATASHEET

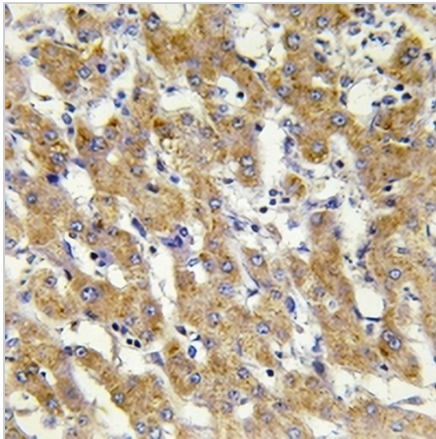
Cytochrome P450 2C8/9/18/19 Rabbit Polyclonal Antibody

CAT. NO. APA11305

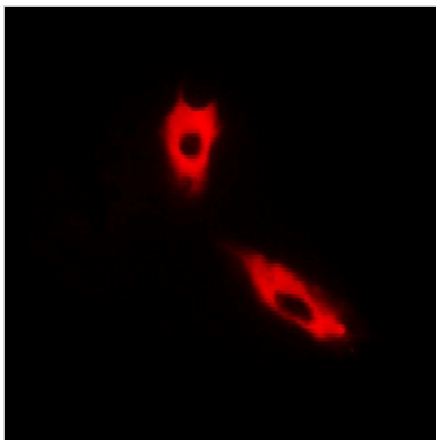
DATA



Western blot analysis of Cytochrome P450 2C8/9/18/19 expression in rat liver (A) whole cell lysates. (Predicted band size: 55 kD; Observed band size: 56 kD)



Immunohistochemical analysis of Cytochrome P450 2C8/9/18/19 staining in human liver cancer formalin fixed paraffin embedded tissue section. The section was pre-treated using heat mediated antigen retrieval with sodium citrate buffer (pH 6.0). The section was then incubated with the antibody at room temperature and detected using an HRP conjugated compact polymer system. DAB was used as the chromogen. The section was then counterstained with haematoxylin and mounted with DPX.



Immunofluorescent analysis of Cytochrome P450 2C8/9/18/19 staining in HeLa cells. Formalin-fixed cells were permeabilized with 0.1% Triton X-100 in TBS for 5-10 minutes and blocked with 3% BSA-PBS for 30 minutes at room temperature. Cells were probed with the primary antibody in 3% BSA-PBS and incubated overnight at 4 °C in a humidified chamber. Cells were washed with PBST and incubated with a Alexa Fluor 594-conjugated secondary antibody (red) in PBS at room temperature in the dark.

STORAGE

Store at 4°C short term. For long term storage, store at -20°C, avoiding freeze/thaw cycles.

NOTE

For Research Use Only. Not for diagnostic, therapeutics, prophylactic or in vivo use.