

DATASHEET

MINT3 Rabbit Polyclonal Antibody

CAT. NO. APA11312

KEY FEATURES

Target	MINT3	Source / Host	Rabbit
Reactivity	Human	Clonality	Polyclonal
Applications	WB, IHC	Conjugation	Unconjugated
Form / Buffer	Liquid in 0.42% Potassium phosphate, 0.87% Sodium chloride, pH 7.3, 30% glycerol, and 0.01% sodium azide.		Storage at-20°C

BACKGROUND

May modulate processing of the amyloid-beta precursor protein (APP) and hence formation of APP-beta. May enhance the activity of HIF1A in macrophages by inhibiting the activity of HIF1AN.

APPLICATION

To ensure optimal assay performance, AREX recommends conducting reagent titration tailored to each testing system for optimal detection results.

WB	1:500 - 1:1000
IHC	1:50 - 1:200

*Results are sample-specific. Please refer to your local assay conditions and test parameters for reference.

PRODUCT OVERVIEW

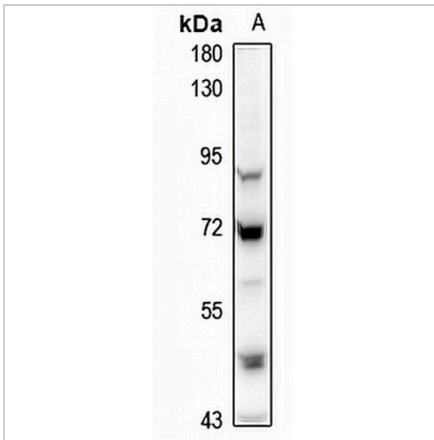
Description	Rabbit polyclonal antibody to MINT3
Specificity	Recognizes endogenous levels of MINT3 protein.
Antibody Type	Primary antibody
Immunogen	KLH-conjugated synthetic peptide encompassing a sequence within the center region of human MINT3. The exact sequence is proprietary.
Purification	The antibody was purified by immunogen affinity chromatography.
Molecular Weight	Predicted: 61 kD; Observed: 70 kD
Form/Buffer	Liquid in 0.42% Potassium phosphate, 0.87% Sodium chloride, pH 7.3, 30% glycerol, and 0.01% sodium azide.
Alternative Names	MINT3; X11L2; Amyloid beta A4 precursor protein-binding family A member 3; Adapter protein X11gamma; Neuron-specific X11L2 protein; Neuronal Munc18-1-interacting protein 3; Mint-3
Gene Symbol	APBA3
Entrez Gene	9546(Human)
SwissProt	O96018(Human)

*AREX continuously optimizes our products. Webpage content may not reflect the latest updates. For inquiries, please contact info@arexbio.com or your local distributor.

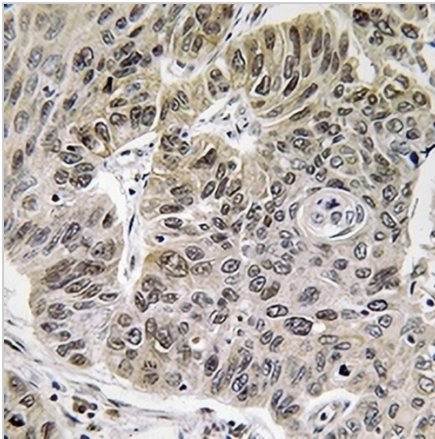
*Clone Number, Reactivity, Source/Host and Clonality can be found in the product name and Key Features section above.

DATASHEET**MINT3 Rabbit Polyclonal Antibody**

CAT. NO. APA11312

DATA

Western blot analysis of MINT3 expression in MCF7 (A) whole cell lysates. (Predicted band size: 61 kD; Observed band size: 70 kD)



Immunohistochemical analysis of MINT3 staining in human lung cancer formalin fixed paraffin embedded tissue section. The section was pre-treated using heat mediated antigen retrieval with sodium citrate buffer (pH 6.0). The section was then incubated with the antibody at room temperature and detected using an HRP conjugated compact polymer system. DAB was used as the chromogen. The section was then counterstained with haematoxylin and mounted with DPX.

STORAGE

Store at 4°C short term. For long term storage, store at -20°C, avoiding freeze/thaw cycles.

NOTE

For Research Use Only. Not for diagnostic, therapeutics, prophylactic or in vivo use.