

**DATASHEET**

**Carboxypeptidase O Rabbit Polyclonal Antibody**

CAT. NO. APA11317

**KEY FEATURES**

Target	Carboxypeptidase O	Source / Host	Rabbit
Reactivity	Human, Mouse, Rat	Clonality	Polyclonal
Applications	WB, IF/ICC	Conjugation	Unconjugated
Form / Buffer	Liquid in 0.42% Potassium phosphate, 0.87% Sodium chloride, pH 7.3, 30% glycerol, and 0.01% sodium azide.		Storage at -20°C

**BACKGROUND**

Carboxypeptidase which preferentially cleaves C-terminal acidic residues from peptides and proteins. Can also cleave C-terminal hydrophobic amino acids, with a preference for small residues over large residues.

**APPLICATION**

To ensure optimal assay performance, AREX recommends conducting reagent titration tailored to each testing system for optimal detection results.

WB	1:500 - 1:1000
IF/ICC	1:50 - 1:200

\*Results are sample-specific. Please refer to your local assay conditions and test parameters for reference.

**PRODUCT OVERVIEW**

Description	Rabbit polyclonal antibody to Carboxypeptidase O
Specificity	Recognizes endogenous levels of Carboxypeptidase O protein.
Antibody Type	Primary antibody
Immunogen	KLH-conjugated synthetic peptide encompassing a sequence within the center region of human Carboxypeptidase O. The exact sequence is proprietary.
Purification	The antibody was purified by immunogen affinity chromatography.
Molecular Weight	Predicted: 42 kD; Observed: 42 kD
Form/Buffer	Liquid in 0.42% Potassium phosphate, 0.87% Sodium chloride, pH 7.3, 30% glycerol, and 0.01% sodium azide.
Alternative Names	Carboxypeptidase O; CPO
Gene Symbol	CPO
Entrez Gene	130749(Human)
SwissProt	Q8IVL8(Human)

\*AREX continuously optimizes our products. Webpage content may not reflect the latest updates. For inquiries, please contact [info@arexbio.com](mailto:info@arexbio.com) or your local distributor.

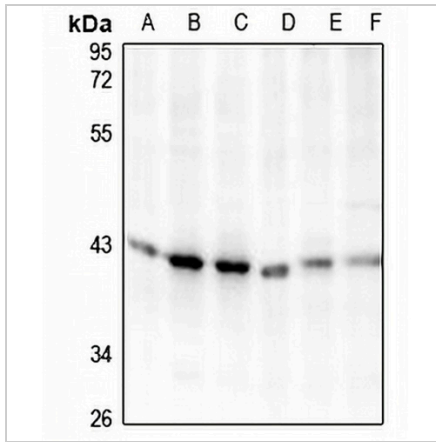
\*Clone Number, Reactivity, Source/Host and Clonality can be found in the product name and Key Features section above.

**DATASHEET**

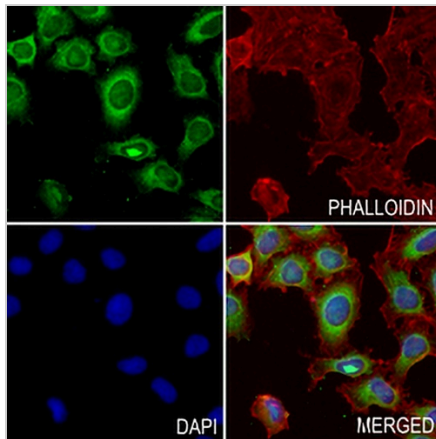
**Carboxypeptidase O Rabbit Polyclonal Antibody**

CAT. NO. APA11317

**DATA**



Western blot analysis of Carboxypeptidase O expression in H1792 (A), MCF7 (B), U87MG (C), CT26 (D), C6 (E), DLD (F) whole cell lysates. (Predicted band size: 42 kD; Observed band size: 42 kD)



Immunofluorescent analysis of Carboxypeptidase O staining in A549 cells. Formalin-fixed cells were permeabilized with 0.1% Triton X-100 in TBS for 5-10 minutes and blocked with 3% BSA-PBS for 30 minutes at room temperature. Cells were probed with the primary antibody in 3% BSA-PBS and incubated overnight at 4 °C in a humidified chamber. Cells were washed with PBST and incubated with a AREX® Fluor 488 -conjugated secondary antibody (green) in PBS at room temperature in the dark. Phalloidin - AREX® Fluor 594 was used to stain Actin filaments (red). DAPI was used to stain the cell nuclei (blue).

**STORAGE**

Store at 4°C short term. For long term storage, store at -20°C, avoiding freeze/thaw cycles.

**NOTE**

For Research Use Only. Not for diagnostic, therapeutics, prophylactic or in vivo use.