

## DATASHEET

# I-MF Rabbit Polyclonal Antibody

CAT. NO. APA11333

### KEY FEATURES

Target	I-MF	Source / Host	Rabbit
Reactivity	Human, Mouse, Rat	Clonality	Polyclonal
Applications	WB	Conjugation	Unconjugated
Form / Buffer	Liquid in 0.42% Potassium phosphate, 0.87% Sodium chloride, pH 7.3, 30% glycerol, and 0.01% sodium azide.		Storage at-20°C

### BACKGROUND

Inhibits the transactivation activity of the Myod family of myogenic factors and represses myogenesis . Acts by associating with Myod family members and retaining them in the cytoplasm by masking their nuclear localization signals . Can also interfere with the DNA-binding activity of Myod family members . Plays an important role in trophoblast and chondrogenic differentiation . Regulates the transcriptional activity of TCF7L1/TCF3 by interacting directly with TCF7L1/TCF3 and preventing it from binding DNA . Binds to the axin complex, resulting in an increase in the level of free beta-catenin . Affects axin regulation of the WNT and JNK signaling pathways . Regulates the activity of mechanosensitive Piezo channel .

### APPLICATION

To ensure optimal assay performance, AREX recommends conducting reagent titration tailored to each testing system for optimal detection results.

WB	1:500 - 1:1000
----	----------------

\*Results are sample-specific. Please refer to your local assay conditions and test parameters for reference.

### PRODUCT OVERVIEW

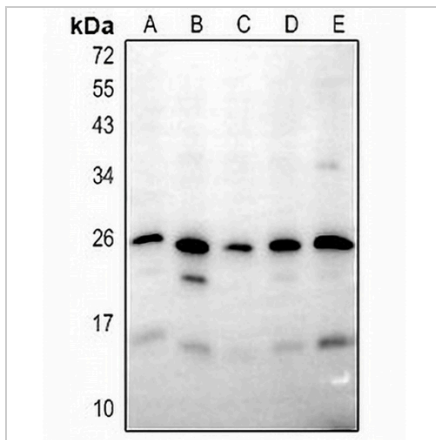
Description	Rabbit polyclonal antibody to I-MF
Specificity	Recognizes endogenous levels of I-MF protein.
Antibody Type	Primary antibody
Immunogen	KLH-conjugated synthetic peptide encompassing a sequence within the center region of human I-MF. The exact sequence is proprietary.
Purification	The antibody was purified by immunogen affinity chromatography.
Molecular Weight	Predicted: 25 kD; Observed: 25 kD
Form/Buffer	Liquid in 0.42% Potassium phosphate, 0.87% Sodium chloride, pH 7.3, 30% glycerol, and 0.01% sodium azide.
Alternative Names	MyoD family inhibitor; Myogenic repressor I-mf
Gene Symbol	MDFI
Entrez Gene	4188(Human); 17240(Mouse)
SwissProt	Q99750(Human); P70331(Mouse)

\*AREX continuously optimizes our products. Webpage content may not reflect the latest updates. For inquiries, please contact [info@arexbio.com](mailto:info@arexbio.com) or your local distributor.

\*Clone Number, Reactivity, Source/Host and Clonality can be found in the product name and Key Features section above.

**DATASHEET****I-MF Rabbit Polyclonal Antibody**

CAT. NO. APA11333

**DATA**

Western blot analysis of I-MF expression in mouse embryo (A), HCT116 (B), SGC7901 (C), Panc1 (D), C6 (E) whole cell lysates. (Predicted band size: 25 kD; Observed band size: 25 kD)

**STORAGE**

Store at 4°C short term. For long term storage, store at -20°C, avoiding freeze/thaw cycles.

**NOTE**

For Research Use Only. Not for diagnostic, therapeutics, prophylactic or in vivo use.