

**DATASHEET**

**PTGR1 Rabbit Polyclonal Antibody**

CAT. NO. APA11334

**KEY FEATURES**

Target	PTGR1	Source / Host	Rabbit
Reactivity	Human, Mouse	Clonality	Polyclonal
Applications	WB	Conjugation	Unconjugated
Form / Buffer	Liquid in 0.42% Potassium phosphate, 0.87% Sodium chloride, pH 7.3, 30% glycerol, and 0.01% sodium azide.		Storage at -20°C

**BACKGROUND**

NAD(P)H-dependent oxidoreductase involved in metabolic inactivation of pro- and anti-inflammatory eicosanoids: prostaglandins (PG), leukotrienes (LT) and lipoxins (LX) H-dependent oxidoreductase involved in metabolic inactivation of pro- and anti-inflammatory eicosanoids: prostaglandins (PG), leukotrienes (LT) and lipoxins (LX) . Catalyzes with high efficiency the reduction of the 13,14 double bond of 15-oxoPGs, including 15-oxo-PGE1, 15-oxo-PGE2, 15-oxo-PGF1-alpha and 15-oxo-PGF2-alpha . Catalyzes with lower efficiency the oxidation of the hydroxyl group at C12 of LTB4 and its derivatives, converting them into biologically less active 12-oxo-LTB4 metabolites . Reduces 15-oxo-LXA4 to 13,14 dihydro-15-oxo-LXA4, enhancing neutrophil recruitment at the inflammatory site .

**APPLICATION**

To ensure optimal assay performance, AREX recommends conducting reagent titration tailored to each testing system for optimal detection results.

WB	1:500 - 1:1000
----	----------------

\*Results are sample-specific. Please refer to your local assay conditions and test parameters for reference.

**PRODUCT OVERVIEW**

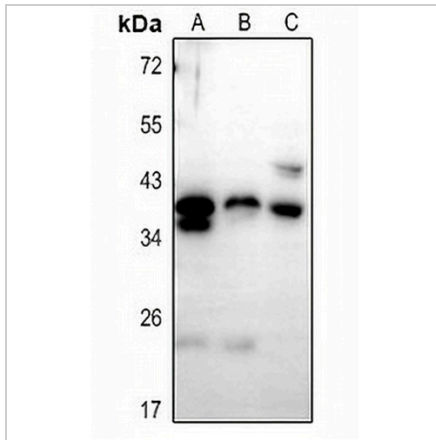
Description	Rabbit polyclonal antibody to PTGR1
Specificity	Recognizes endogenous levels of PTGR1 protein.
Antibody Type	Primary antibody
Immunogen	KLH-conjugated synthetic peptide encompassing a sequence within the center region of human PTGR1. The exact sequence is proprietary.
Purification	The antibody was purified by immunogen affinity chromatography.
Molecular Weight	Predicted: 35 kD; Observed: 36 kD
Form/Buffer	Liquid in 0.42% Potassium phosphate, 0.87% Sodium chloride, pH 7.3, 30% glycerol, and 0.01% sodium azide.
Alternative Names	LTB4DH; Prostaglandin reductase 1; PRG-1; 15-oxoprostaglandin 13-reductase; NADP-dependent leukotriene B4 12-hydroxydehydrogenase
Gene Symbol	PTGR1
Entrez Gene	22949(Human); 67103(Mouse)
SwissProt	Q14914(Human); Q91YR9(Mouse)

\*AREX continuously optimizes our products. Webpage content may not reflect the latest updates. For inquiries, please contact [info@arexbio.com](mailto:info@arexbio.com) or your local distributor.

\*Clone Number, Reactivity, Source/Host and Clonality can be found in the product name and Key Features section above.

**DATASHEET****PTGR1 Rabbit Polyclonal Antibody**

CAT. NO. APA11334

**DATA**

Western blot analysis of PTGR1 expression in HEK293T (A), HepG2 (B), mouse kidney (C) whole cell lysates. (Predicted band size: 35 kD; Observed band size: 36 kD)

**STORAGE**

Store at 4°C short term. For long term storage, store at -20°C, avoiding freeze/thaw cycles.

**NOTE**

For Research Use Only. Not for diagnostic, therapeutics, prophylactic or in vivo use.