

DATASHEET

NCAM2 Rabbit Polyclonal Antibody

CAT. NO. APA11337

KEY FEATURES

Target	NCAM2	Source / Host	Rabbit
Reactivity	Human, Mouse, Rat	Clonality	Polyclonal
Applications	WB	Conjugation	Unconjugated
Form / Buffer	Liquid in 0.42% Potassium phosphate, 0.87% Sodium chloride, pH 7.3, 30% glycerol, and 0.01% sodium azide.		Storage at -20°C

BACKGROUND

May play important roles in selective fasciculation and zone-to-zone projection of the primary olfactory axons.

APPLICATION

To ensure optimal assay performance, AREX recommends conducting reagent titration tailored to each testing system for optimal detection results.

WB	1:500 - 1:1000
----	----------------

*Results are sample-specific. Please refer to your local assay conditions and test parameters for reference.

PRODUCT OVERVIEW

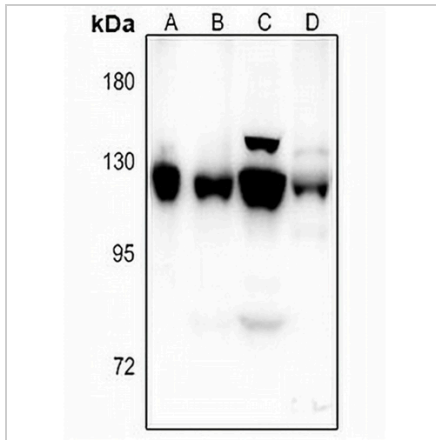
Description	Rabbit polyclonal antibody to NCAM2
Specificity	Recognizes endogenous levels of NCAM2 protein.
Antibody Type	Primary antibody
Immunogen	KLH-conjugated synthetic peptide encompassing a sequence within the center region of human NCAM2. The exact sequence is proprietary.
Purification	The antibody was purified by immunogen affinity chromatography.
Molecular Weight	Predicted: 93 kD; Observed: 125 kD
Form/Buffer	Liquid in 0.42% Potassium phosphate, 0.87% Sodium chloride, pH 7.3, 30% glycerol, and 0.01% sodium azide.
Alternative Names	NCAM21; Neural cell adhesion molecule 2; N-CAM-2; NCAM-2
Gene Symbol	NCAM2
Entrez Gene	4685(Human); 17968(Mouse)
SwissProt	O15394(Human); O35136(Mouse)

*AREX continuously optimizes our products. Webpage content may not reflect the latest updates. For inquiries, please contact info@arexbio.com or your local distributor.

*Clone Number, Reactivity, Source/Host and Clonality can be found in the product name and Key Features section above.

DATASHEET**NCAM2 Rabbit Polyclonal Antibody**

CAT. NO. APA11337

DATA

Western blot analysis of NCAM2 expression in SKOV3 (A), LOVO (B), BV2 (C), H9C2 (D) whole cell lysates. (Predicted band size: 93 kD; Observed band size: 125 kD)

STORAGE

Store at 4°C short term. For long term storage, store at -20°C, avoiding freeze/thaw cycles.

NOTE

For Research Use Only. Not for diagnostic, therapeutics, prophylactic or in vivo use.