

DATASHEET

CD215 Rabbit Polyclonal Antibody

CAT. NO. APA11346

KEY FEATURES

Target	CD215	Source / Host	Rabbit
Reactivity	Human, Mouse, Rat	Clonality	Polyclonal
Applications	WB	Conjugation	Unconjugated
Form / Buffer	Liquid in 0.42% Potassium phosphate, 0.87% Sodium chloride, pH 7.3, 30% glycerol, and 0.01% sodium azide.		Storage at -20°C

BACKGROUND

High-affinity receptor for interleukin-15 . Can signal both in cis and trans where IL15R from one subset of cells presents IL15 to neighboring IL2RG-expressing cells . In neutrophils, binds and activates kinase SYK in response to IL15 stimulation . In neutrophils, required for IL15-induced phagocytosis in a SYK-dependent manner . Expression of different isoforms may alter or interfere with signal transduction .

APPLICATION

To ensure optimal assay performance, AREX recommends conducting reagent titration tailored to each testing system for optimal detection results.

WB	1:500 - 1:1000
----	----------------

*Results are sample-specific. Please refer to your local assay conditions and test parameters for reference.

PRODUCT OVERVIEW

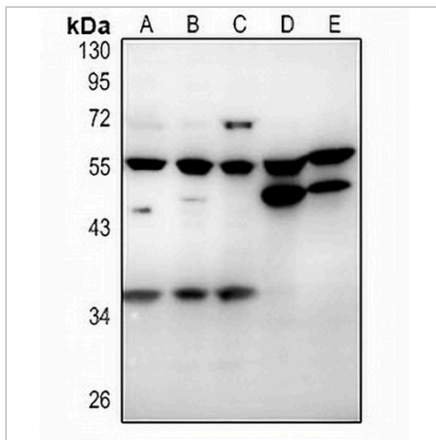
Description	Rabbit polyclonal antibody to CD215
Specificity	Recognizes endogenous levels of CD215 protein.
Antibody Type	Primary antibody
Immunogen	KLH-conjugated synthetic peptide encompassing a sequence within the center region of human CD215. The exact sequence is proprietary.
Purification	The antibody was purified by immunogen affinity chromatography.
Molecular Weight	Predicted: 28 kD; Observed: 55; 37 kD
Form/Buffer	Liquid in 0.42% Potassium phosphate, 0.87% Sodium chloride, pH 7.3, 30% glycerol, and 0.01% sodium azide.
Alternative Names	Interleukin-15 receptor subunit alpha; IL-15 receptor subunit alpha; IL-15R-alpha; IL-15RA; CD215
Gene Symbol	IL15RA
Entrez Gene	3601(Human); 16169(Mouse)
SwissProt	Q13261(Human); Q60819(Mouse)

*AREX continuously optimizes our products. Webpage content may not reflect the latest updates. For inquiries, please contact info@arexbio.com or your local distributor.

*Clone Number, Reactivity, Source/Host and Clonality can be found in the product name and Key Features section above.

DATASHEET**CD215 Rabbit Polyclonal Antibody**

CAT. NO. APA11346

DATA

Western blot analysis of CD215 expression in SGC7901 (A), HCT116 (B), A2780 (C), mouse brain (D), rat stomach (E) whole cell lysates. (Predicted band size: 28 kD; Observed band size: 55; 37 kD)

STORAGE

Store at 4°C short term. For long term storage, store at -20°C, avoiding freeze/thaw cycles.

NOTE

For Research Use Only. Not for diagnostic, therapeutics, prophylactic or in vivo use.