

**DATASHEET**

**Frizzled 2 Rabbit Polyclonal Antibody**

CAT. NO. APA11358

**KEY FEATURES**

Target	Frizzled 2	Source / Host	Rabbit
Reactivity	Human, Mouse	Clonality	Polyclonal
Applications	WB, IHC, IF/ICC	Conjugation	Unconjugated
Form / Buffer	Liquid in 0.42% Potassium phosphate, 0.87% Sodium chloride, pH 7.3, 30% glycerol, and 0.01% sodium azide.		Storage at-20°C

**BACKGROUND**

Receptor for Wnt proteins. Most of frizzled receptors are coupled to the beta-catenin canonical signaling pathway, which leads to the activation of disheveled proteins, inhibition of GSK-3 kinase, nuclear accumulation of beta-catenin and activation of Wnt target genes. A second signaling pathway involving PKC and calcium fluxes has been seen for some family members, but it is not yet clear if it represents a distinct pathway or if it can be integrated in the canonical pathway, as PKC seems to be required for Wnt-mediated inactivation of GSK-3 kinase. Both pathways seem to involve interactions with G-proteins. May be involved in transduction and intercellular transmission of polarity information during tissue morphogenesis and/or in differentiated tissues.

**APPLICATION**

To ensure optimal assay performance, AREX recommends conducting reagent titration tailored to each testing system for optimal detection results.

WB	1:500 - 1:1000
IHC	1:50 - 1:100
IF/ICC	1:50 - 1:200

\*Results are sample-specific. Please refer to your local assay conditions and test parameters for reference.

**PRODUCT OVERVIEW**

Description	Rabbit polyclonal antibody to Frizzled 2
Specificity	Recognizes endogenous levels of Frizzled 2 protein.
Antibody Type	Primary antibody
Immunogen	KLH-conjugated synthetic peptide encompassing a sequence within the center region of human Frizzled 2. The exact sequence is proprietary.
Purification	The antibody was purified by immunogen affinity chromatography.
Molecular Weight	Predicted: 63 kD; Observed: 64 kD
Form/Buffer	Liquid in 0.42% Potassium phosphate, 0.87% Sodium chloride, pH 7.3, 30% glycerol, and 0.01% sodium azide.
Alternative Names	Frizzled-2; Fz-2; hFz2; FzE2
Gene Symbol	FZD2
Entrez Gene	2535(Human); 57265(Mouse)
SwissProt	Q14332(Human); Q9JIP6(Mouse)

\*AREX continuously optimizes our products. Webpage content may not reflect the latest updates. For inquiries, please contact [info@arexbio.com](mailto:info@arexbio.com) or your local distributor.

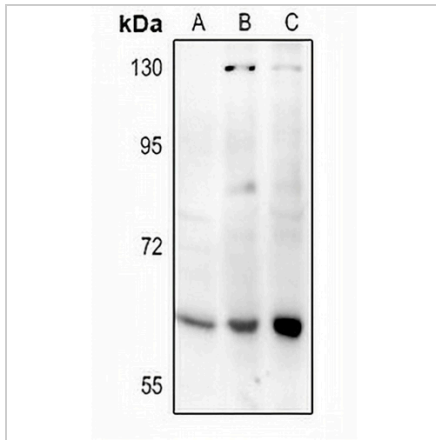
\*Clone Number, Reactivity, Source/Host and Clonality can be found in the product name and Key Features section above.

**DATASHEET**

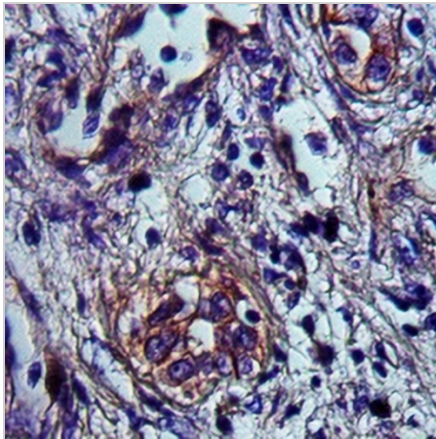
**Frizzled 2 Rabbit Polyclonal Antibody**

CAT. NO. APA11358

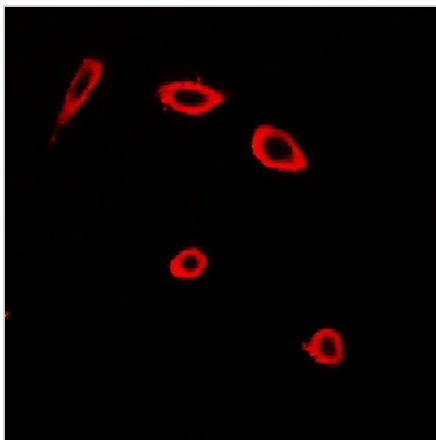
**DATA**



Western blot analysis of Frizzled 2 expression in MEF (A), A375 (B), MCF7 (C) whole cell lysates. (Predicted band size: 63 kD; Observed band size: 64 kD)



Immunohistochemical analysis of Frizzled 2 staining in human kidney cancer formalin fixed paraffin embedded tissue section. The section was pre-treated using heat mediated antigen retrieval with sodium citrate buffer (pH 6.0). The section was then incubated with the antibody at room temperature and detected using an HRP conjugated compact polymer system. DAB was used as the chromogen. The section was then counterstained with haematoxylin and mounted with DPX.



Immunofluorescent analysis of Frizzled 2 staining in MCF7 cells. Formalin-fixed cells were permeabilized with 0.1% Triton X-100 in TBS for 5-10 minutes and blocked with 3% BSA-PBS for 30 minutes at room temperature. Cells were probed with the primary antibody in 3% BSA-PBS and incubated overnight at 4 °C in a hidified chamber. Cells were washed with PBST and incubated with a Alexa Fluor 594-conjugated secondary antibody (red) in PBS at room temperature in the dark.

**STORAGE**

Store at 4°C short term. For long term storage, store at -20°C, avoiding freeze/thaw cycles.

**NOTE**

For Research Use Only. Not for diagnostic, therapeutics, prophylactic or in vivo use.