

DATASHEET

NMBR Rabbit Polyclonal Antibody

CAT. NO. APA11365

KEY FEATURES

Target	NMBR	Source / Host	Rabbit
Reactivity	Human, Mouse, Rat	Clonality	Polyclonal
Applications	WB, IF/ICC	Conjugation	Unconjugated
Form / Buffer	Liquid in 0.42% Potassium phosphate, 0.87% Sodium chloride, pH 7.3, 30% glycerol, and 0.01% sodium azide.		Storage at-20°C

BACKGROUND

Receptor for neuromedin-B . Contributes to the maintenance of basal sigh rate through signaling in the pre-Botzinger complex, a cluster of several thousand neurons in the ventrolateral medulla responsible for inspiration during respiratory activity . Contributes to the induction of sneezing following exposure to chemical irritants or allergens which causes release of NMB by nasal sensory neurons and activation of NMBR-expressing neurons in the sneeze-evoking region of the brainstem . These in turn activate neurons of the caudal ventral respiratory group, giving rise to the sneezing response . Contributes to induction of acute itch, possibly through its activation on dorsal root ganglion neurons by the NMB peptide .

APPLICATION

To ensure optimal assay performance, AREX recommends conducting reagent titration tailored to each testing system for optimal detection results.

WB	1:500 - 1:1000
IF/ICC	1:100 - 1:500

*Results are sample-specific. Please refer to your local assay conditions and test parameters for reference.

PRODUCT OVERVIEW

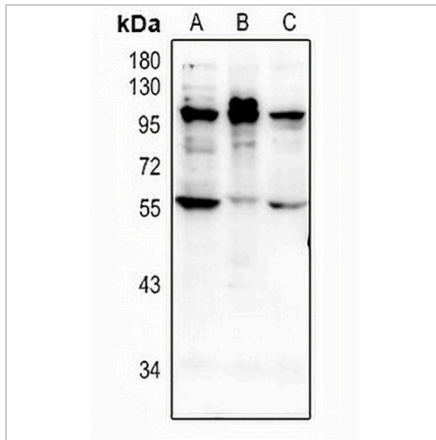
Description	Rabbit polyclonal antibody to NMBR
Specificity	Recognizes endogenous levels of NMBR protein.
Antibody Type	Primary antibody
Immunogen	KLH-conjugated synthetic peptide encompassing a sequence within the center region of human NMBR. The exact sequence is proprietary.
Purification	The antibody was purified by immunogen affinity chromatography.
Molecular Weight	Predicted: 43 kD; Observed: 100; 55 kD
Form/Buffer	Liquid in 0.42% Potassium phosphate, 0.87% Sodium chloride, pH 7.3, 30% glycerol, and 0.01% sodium azide.
Alternative Names	Neuromedin-B receptor; NMB-R; Epididymis tissue protein Li 185a; Neuromedin-B-preferring bombesin receptor
Gene Symbol	NMBR
Entrez Gene	4829(Human); 18101(Mouse); 25264(Rat)
SwissProt	P28336(Human); O54799(Mouse); P24053(Rat)

*AREX continuously optimizes our products. Webpage content may not reflect the latest updates. For inquiries, please contact info@arexbio.com or your local distributor.

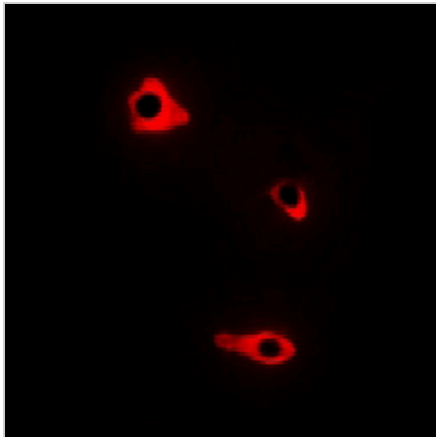
*Clone Number, Reactivity, Source/Host and Clonality can be found in the product name and Key Features section above.

DATASHEET**NMBR Rabbit Polyclonal Antibody**

CAT. NO. APA11365

DATA

Western blot analysis of NMBR expression in EC9706 (A), HeLa (B), PC3 (C) whole cell lysates. (Predicted band size: 43 kD; Observed band size: 100; 55 kD)



Immunofluorescent analysis of NMBR staining in A549 cells. Formalin-fixed cells were permeabilized with 0.1% Triton X-100 in TBS for 5-10 minutes and blocked with 3% BSA-PBS for 30 minutes at room temperature. Cells were probed with the primary antibody in 3% BSA-PBS and incubated overnight at 4 °C in a humidified chamber. Cells were washed with PBST and incubated with a Alexa Fluor 594-conjugated secondary antibody (red) in PBS at room temperature in the dark.

STORAGE

Store at 4°C short term. For long term storage, store at -20°C, avoiding freeze/thaw cycles.

NOTE

For Research Use Only. Not for diagnostic, therapeutics, prophylactic or in vivo use.