

DATASHEET

Actin-pan (Acetyl-K52/50/51) Rabbit Polyclonal Antibody

CAT. NO. APA11388

KEY FEATURES

Target	Actin-pan (Acetyl-K52/50/51)	Source / Host	Rabbit
Reactivity	Human, Mouse, Rat, Bovine, Chicken	Clonality	Polyclonal
Applications	WB, IF/ICC	Conjugation	Unconjugated
Form / Buffer	Liquid in 0.42% Potassium phosphate, 0.87% Sodium chloride, pH 7.3, 30% glycerol, and 0.01% sodium azide.	Storage	at-20°C

BACKGROUND

Actins are highly conserved proteins that are involved in various types of cell motility and are ubiquitously expressed in all eukaryotic cells.

APPLICATION

To ensure optimal assay performance, AREX recommends conducting reagent titration tailored to each testing system for optimal detection results.

WB	1:500 - 1:1000
IF/ICC	1:50 - 1:200

*Results are sample-specific. Please refer to your local assay conditions and test parameters for reference.

PRODUCT OVERVIEW

Description	Rabbit polyclonal antibody to Actin-pan (Acetyl-K52/50/51)
Specificity	Recognizes endogenous levels of Actin-pan protein only when acetylated at K52/50/51.
Antibody Type	Primary antibody
Immunogen	KLH-conjugated synthetic acetylated peptide corresponding to residues surrounding K52/50/51 of human Actin-pan protein. The exact sequence is proprietary.
Purification	The antibody was purified by immunogen affinity chromatography.
Molecular Weight	Predicted: 41; Observed: 42 kD
Form/Buffer	Liquid in 0.42% Potassium phosphate, 0.87% Sodium chloride, pH 7.3, 30% glycerol, and 0.01% sodium azide.
Alternative Names	ACTA2; ACTSA; ACTVS; GIG46; Actin aortic smooth muscle; Alpha-actin-2; Cell growth-inhibiting gene 46 protein; ACTB; Actin cytoplasmic 1; Beta-actin; ACTC1; ACTC; Actin alpha cardiac muscle 1; Alpha-cardiac actin; ACTG1; ACTB; ACTG; Actin cytoplasmic 2; Gamma-actin; ACTG2; ACTA3; ACTL3; ACTSG; Actin gamma-enteric smooth muscle; Alpha-actin-3; Gamma-2-actin; Smooth muscle gamma-actin; ACTA1; ACTA; Actin alpha skeletal muscle; Alpha-actin-1
Gene Symbol	ACTA2; ACTB; ACTC1; ACTG1; ACTG2; ACTA1
Entrez Gene	59; 60; 70; 71; 72; 58(Human); 11475; 11461; 11464; 11465(Mouse); 81633; 81822; 29275; 100361457(Rat)
SwissProt	P62736; P60709; P68032; P63261; P63267; P68133(Human); P62737; P60710; P68033; P63260(Mouse); P62738; P60711; P68035; P63259(Rat)

*AREX continuously optimizes our products. Webpage content may not reflect the latest updates. For inquiries, please contact info@arexbio.com or your local distributor.

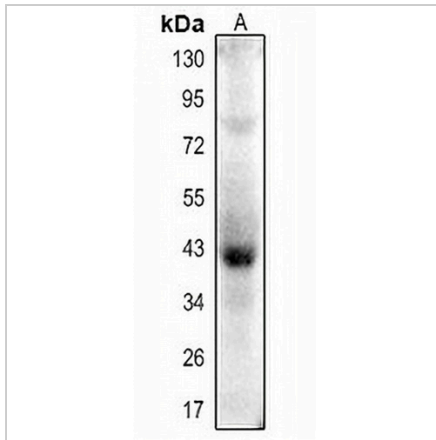
*Clone Number, Reactivity, Source/Host and Clonality can be found in the product name and Key Features section above.

DATASHEET

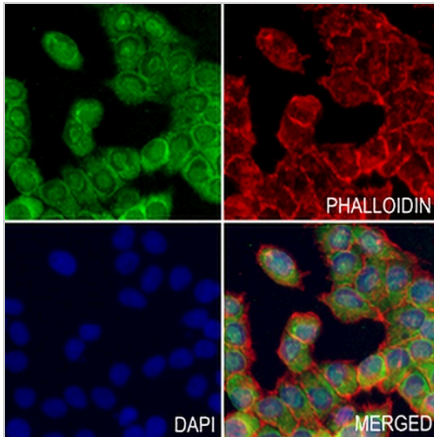
Actin-pan (Acetyl-K52/50/51) Rabbit Polyclonal Antibody

CAT. NO. APA11388

DATA



Western blot analysis of Actin-pan (Acetyl-K52/50/51) expression in mouse muscle (A) whole cell lysates. (Predicted band size: 41; 42 kD; Observed band size: 42 kD)



Immunofluorescent analysis of Actin-pan (Acetyl-K52/50/51) staining in A549 cells. Formalin-fixed cells were permeabilized with 0.1% Triton X-100 in TBS for 5-10 minutes and blocked with 3% BSA-PBS for 30 minutes at room temperature. Cells were probed with the primary antibody in 3% BSA-PBS and incubated overnight at 4 °C in a humidified chamber. Cells were washed with PBST and incubated with a AREX® Fluor 488 - conjugated secondary antibody (green) in PBS at room temperature in the dark. Phalloidin - AREX® Fluor 594 was used to stain Actin filaments (red). DAPI was used to stain the cell nuclei (blue).

STORAGE

Store at 4°C short term. For long term storage, store at -20°C, avoiding freeze/thaw cycles.

NOTE

For Research Use Only. Not for diagnostic, therapeutics, prophylactic or in vivo use.