

**DATASHEET**

**Histone Deacetylase 1 (Acetyl-K220) Rabbit Polyclonal Antibody**

CAT. NO. APA11389

**KEY FEATURES**

Target	Histone Deacetylase 1 (Acetyl-K220)	Source / Host	Rabbit
Reactivity	Human, Mouse, Rat, Bovine, Chicken	Clonality	Polyclonal
Applications	WB	Conjugation	Unconjugated
Form / Buffer	Liquid in 0.42% Potassium phosphate, 0.87% Sodium chloride, pH 7.3, 30% glycerol, and 0.01% sodium azide.		Storage at -20°C

**BACKGROUND**

Histone deacetylase that catalyzes the deacetylation of lysine residues on the N-terminal part of the core histones (H2A, H2B, H3 and H4). Histone deacetylation gives a tag for epigenetic repression and plays an important role in transcriptional regulation, cell cycle progression and developmental events. Histone deacetylases act via the formation of large multiprotein complexes. Acts as a component of the histone deacetylase NuRD complex which participates in the remodeling of chromatin. As part of the SIN3B complex is recruited downstream of the constitutively active genes transcriptional start sites through interaction with histones and mitigates histone acetylation and RNA polymerase II progression within transcribed regions contributing to the regulation of transcription.

**APPLICATION**

To ensure optimal assay performance, AREX recommends conducting reagent titration tailored to each testing system for optimal detection results.

WB	1:500 - 1:1000
----	----------------

\*Results are sample-specific. Please refer to your local assay conditions and test parameters for reference.

**PRODUCT OVERVIEW**

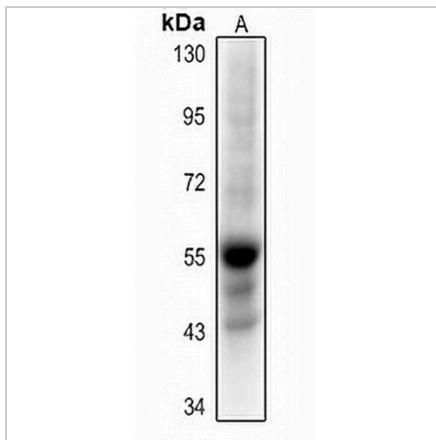
Description	Rabbit polyclonal antibody to Histone Deacetylase 1 (Acetyl-K220)
Specificity	Recognizes endogenous levels of Histone Deacetylase 1 protein only when acetylated at K220.
Antibody Type	Primary antibody
Immunogen	KLH-conjugated synthetic acetylated peptide corresponding to residues surrounding K220 of human Histone Deacetylase 1 protein. The exact sequence is proprietary.
Purification	The antibody was purified by immunogen affinity chromatography.
Molecular Weight	Predicted: 55 kD; Observed: 55 kD
Form/Buffer	Liquid in 0.42% Potassium phosphate, 0.87% Sodium chloride, pH 7.3, 30% glycerol, and 0.01% sodium azide.
Alternative Names	RPD3L1; Histone deacetylase 1; HD1
Gene Symbol	HDAC1
Entrez Gene	3065(Human); 433759(Mouse); 297893(Rat)
SwissProt	Q13547(Human); O09106(Mouse); Q4QQW4(Rat)

\*AREX continuously optimizes our products. Webpage content may not reflect the latest updates. For inquiries, please contact [info@arexbio.com](mailto:info@arexbio.com) or your local distributor.

\*Clone Number, Reactivity, Source/Host and Clonality can be found in the product name and Key Features section above.

**DATASHEET****Histone Deacetylase 1 (Acetyl-K220) Rabbit Polyclonal Antibody**

CAT. NO. APA11389

**DATA**

Western blot analysis of Histone Deacetylase 1 (Acetyl-K220) expression in mouse pancreas (A) whole cell lysates. (Predicted band size: 55 kD; Observed band size: 55 kD)

**STORAGE**

Store at 4°C short term. For long term storage, store at -20°C, avoiding freeze/thaw cycles.

**NOTE**

For Research Use Only. Not for diagnostic, therapeutics, prophylactic or in vivo use.