

**DATASHEET**

**ABHD14B Rabbit Polyclonal Antibody**

CAT. NO. APA11413

**KEY FEATURES**

Target	ABHD14B	Source / Host	Rabbit
Reactivity	Human, Mouse, Rat, Bovine	Clonality	Polyclonal
Applications	WB, IHC	Conjugation	Unconjugated
Form / Buffer	Liquid in 0.42% Potassium phosphate, 0.87% Sodium chloride, pH 7.3, 30% glycerol, and 0.01% sodium azide.		Storage at-20°C

**BACKGROUND**

Acts as an atypical protein-lysine deacetylase in vitro . Catalyzes the deacetylation of lysine residues using CoA as substrate, generating acetyl-CoA and the free amine of protein-lysine residues . Additional experiments are however required to confirm the protein-lysine deacetylase activity in vivo (Probable). Has hydrolase activity towards various surrogate p-nitrophenyl (pNp) substrates, such as pNp-butyrate, pNp-acetate and pNp-octanoate in vitro, with a strong preference for pNp-acetate . May activate transcription .

**APPLICATION**

To ensure optimal assay performance, AREX recommends conducting reagent titration tailored to each testing system for optimal detection results.

WB	1:500 - 1:1000
IHC	1:50 - 1:200

\*Results are sample-specific. Please refer to your local assay conditions and test parameters for reference.

**PRODUCT OVERVIEW**

Description	Rabbit polyclonal antibody to ABHD14B
Specificity	Recognizes endogenous levels of ABHD14B protein.
Antibody Type	Primary antibody
Immunogen	KLH-conjugated synthetic peptide encompassing a sequence within the C-term region of human ABHD14B. The exact sequence is proprietary.
Purification	The antibody was purified by immunogen affinity chromatography.
Molecular Weight	Predicted: 22 kD; Observed: 25 kD
Form/Buffer	Liquid in 0.42% Potassium phosphate, 0.87% Sodium chloride, pH 7.3, 30% glycerol, and 0.01% sodium azide.
Alternative Names	CIB; Alpha/beta hydrolase domain-containing protein 14B; Abhydrolase domain-containing protein 14B; CCG1-interacting factor B
Gene Symbol	ABHD14B
Entrez Gene	84836(Human); 300983(Rat)
SwissProt	Q96IU4(Human); Q8VCR7(Mouse); Q6DGG1(Rat)

\*AREX continuously optimizes our products. Webpage content may not reflect the latest updates. For inquiries, please contact [info@arexbio.com](mailto:info@arexbio.com) or your local distributor.

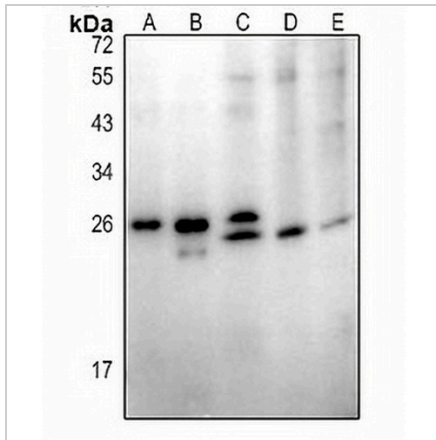
\*Clone Number, Reactivity, Source/Host and Clonality can be found in the product name and Key Features section above.

**DATASHEET**

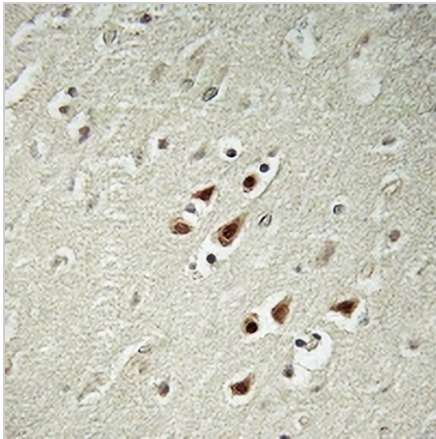
**ABHD14B Rabbit Polyclonal Antibody**

CAT. NO. APA11413

**DATA**



Western blot analysis of ABHD14B expression in mouse spleen (A), rat thymus (B), Jurkat (C), K562 (D), HEK293T (E) whole cell lysates. (Predicted band size: 22 kD; Observed band size: 25 kD)



Immunohistochemical analysis of ABHD14B staining in human brain formalin fixed paraffin embedded tissue section. The section was pre-treated using heat mediated antigen retrieval with sodium citrate buffer (pH 6.0). The section was then incubated with the antibody at room temperature and detected using an HRP conjugated compact polymer system. DAB was used as the chromogen. The section was then counterstained with haematoxylin and mounted with DPX.

**STORAGE**

Store at 4°C short term. For long term storage, store at -20°C, avoiding freeze/thaw cycles.

**NOTE**

For Research Use Only. Not for diagnostic, therapeutics, prophylactic or in vivo use.