

**DATASHEET**

**PLA2G4D Rabbit Polyclonal Antibody**

CAT. NO. APA11418

**KEY FEATURES**

Target	PLA2G4D	Source / Host	Rabbit
Reactivity	Human, Monkey	Clonality	Polyclonal
Applications	WB, IHC	Conjugation	Unconjugated
Form / Buffer	Liquid in 0.42% Potassium phosphate, 0.87% Sodium chloride, pH 7.3, 30% glycerol, and 0.01% sodium azide.		Storage at -20°C

**BACKGROUND**

Calcium-dependent phospholipase A2 that selectively hydrolyzes glycerophospholipids in the sn-2 position . Has a preference for linoleic acid at the sn-2 position .

**APPLICATION**

To ensure optimal assay performance, AREX recommends conducting reagent titration tailored to each testing system for optimal detection results.

WB	1:500 - 1:1000
IHC	1:50 - 1:200

\*Results are sample-specific. Please refer to your local assay conditions and test parameters for reference.

**PRODUCT OVERVIEW**

Description	Rabbit polyclonal antibody to PLA2G4D
Specificity	Recognizes endogenous levels of PLA2G4D protein.
Antibody Type	Primary antibody
Immunogen	KLH-conjugated synthetic peptide encompassing a sequence within the center region of human PLA2G4D. The exact sequence is proprietary.
Purification	The antibody was purified by immunogen affinity chromatography.
Molecular Weight	Predicted: 91 kD; Observed: 92 kD
Form/Buffer	Liquid in 0.42% Potassium phosphate, 0.87% Sodium chloride, pH 7.3, 30% glycerol, and 0.01% sodium azide.
Alternative Names	Cytosolic phospholipase A2 delta; cPLA2-delta; Phospholipase A2 group IVD
Gene Symbol	PLA2G4D
Entrez Gene	283748(Human)
SwissProt	Q86XP0(Human)

\*AREX continuously optimizes our products. Webpage content may not reflect the latest updates. For inquiries, please contact [info@arexbio.com](mailto:info@arexbio.com) or your local distributor.

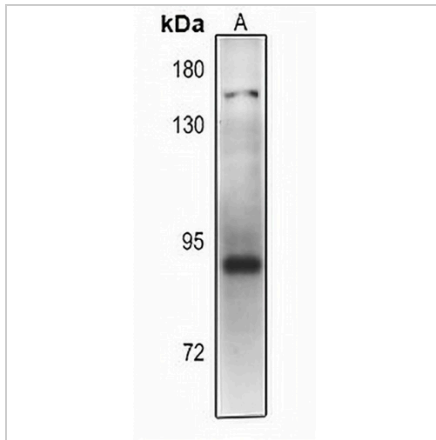
\*Clone Number, Reactivity, Source/Host and Clonality can be found in the product name and Key Features section above.

**DATASHEET**

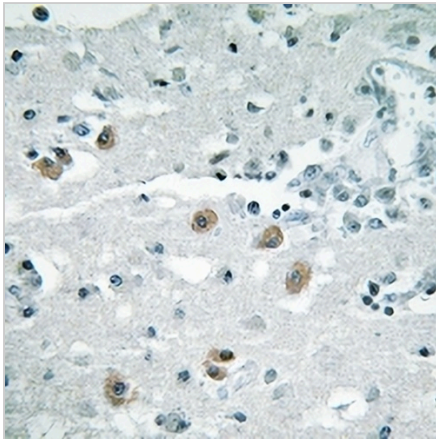
**PLA2G4D Rabbit Polyclonal Antibody**

CAT. NO. APA11418

**DATA**



Western blot analysis of PLA2G4D expression in HeLa (A) whole cell lysates. (Predicted band size: 91 kD; Observed band size: 92 kD)



Immunohistochemical analysis of PLA2G4D staining in human brain formalin fixed paraffin embedded tissue section. The section was pre-treated using heat mediated antigen retrieval with sodium citrate buffer (pH 6.0). The section was then incubated with the antibody at room temperature and detected using an HRP conjugated compact polymer system. DAB was used as the chromogen. The section was then counterstained with haematoxylin and mounted with DPX.

**STORAGE**

Store at 4°C short term. For long term storage, store at -20°C, avoiding freeze/thaw cycles.

**NOTE**

For Research Use Only. Not for diagnostic, therapeutics, prophylactic or in vivo use.