

DATASHEET

SCN7A Rabbit Polyclonal Antibody

CAT. NO. APA11422

KEY FEATURES

Target	SCN7A	Source / Host	Rabbit
Reactivity	Human, Mouse, Rat	Clonality	Polyclonal
Applications	WB, IF/ICC	Conjugation	Unconjugated
Form / Buffer	Liquid in 0.42% Potassium phosphate, 0.87% Sodium chloride, pH 7.3, 30% glycerol, and 0.01% sodium azide.		Storage at-20°C

BACKGROUND

Sodium leak channel functioning as an osmosensor regulating sodium ion levels in various tissues and organs. While most sodium channels are voltage-gated, SCN7A is not and lets sodium flow through membrane along its concentration gradient . In glial cells of the central nervous system, senses body-fluid sodium levels and controls salt intake behavior as well as voluntary water intake through activation of nearby neurons to maintain appropriate sodium levels in the body . By mediating sodium influx into keratinocytes, also plays a role in skin barrier homeostasis .

APPLICATION

To ensure optimal assay performance, AREX recommends conducting reagent titration tailored to each testing system for optimal detection results.

WB	1:500 - 1:1000
IF/ICC	1:100 - 1:500

*Results are sample-specific. Please refer to your local assay conditions and test parameters for reference.

PRODUCT OVERVIEW

Description	Rabbit polyclonal antibody to SCN7A
Specificity	Recognizes endogenous levels of SCN7A protein.
Antibody Type	Primary antibody
Immunogen	KLH-conjugated synthetic peptide encompassing a sequence within the center region of human SCN7A. The exact sequence is proprietary.
Purification	The antibody was purified by immunogen affinity chromatography.
Molecular Weight	Predicted: 193 kD; Observed: 230 kD
Form/Buffer	Liquid in 0.42% Potassium phosphate, 0.87% Sodium chloride, pH 7.3, 30% glycerol, and 0.01% sodium azide.
Alternative Names	SCN6A; Sodium channel protein type 7 subunit alpha; Putative voltage-gated sodium channel subunit alpha Nax; Sodium channel protein cardiac and skeletal muscle subunit alpha; Sodium channel protein type VII subunit alpha
Gene Symbol	SCN7A
Entrez Gene	6332(Human)
SwissProt	Q01118(Human)

*AREX continuously optimizes our products. Webpage content may not reflect the latest updates. For inquiries, please contact info@arexbio.com or your local distributor.

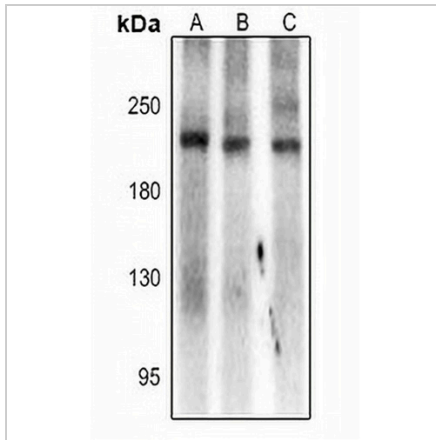
*Clone Number, Reactivity, Source/Host and Clonality can be found in the product name and Key Features section above.

DATASHEET

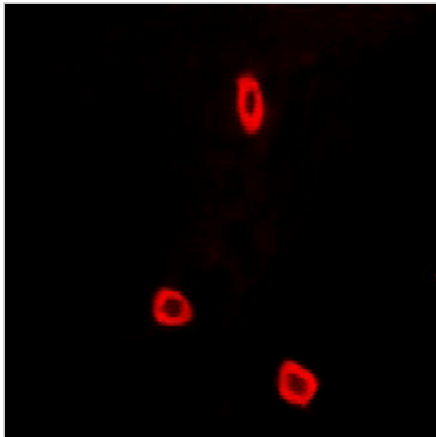
SCN7A Rabbit Polyclonal Antibody

CAT. NO. APA11422

DATA



Western blot analysis of SCN7A expression in A549 (A), NIH3T3 (B), H9C2 (C) whole cell lysates. (Predicted band size: 193 kD; Observed band size: 230 kD)



Immunofluorescent analysis of SCN7A staining in A549 cells. Formalin-fixed cells were permeabilized with 0.1% Triton X-100 in TBS for 5-10 minutes and blocked with 3% BSA-PBS for 30 minutes at room temperature. Cells were probed with the primary antibody in 3% BSA-PBS and incubated overnight at 4 °C in a humidified chamber. Cells were washed with PBST and incubated with a Alexa Fluor 594-conjugated secondary antibody (red) in PBS at room temperature in the dark.

STORAGE

Store at 4°C short term. For long term storage, store at -20°C, avoiding freeze/thaw cycles.

NOTE

For Research Use Only. Not for diagnostic, therapeutics, prophylactic or in vivo use.