

DATASHEET

RALY Rabbit Polyclonal Antibody

CAT. NO. APA11424

KEY FEATURES

Target	RALY	Source / Host	Rabbit
Reactivity	Human, Mouse	Clonality	Polyclonal
Applications	WB	Conjugation	Unconjugated
Form / Buffer	Liquid in 0.42% Potassium phosphate, 0.87% Sodium chloride, pH 7.3, 30% glycerol, and 0.01% sodium azide.		Storage at-20°C

BACKGROUND

RNA-binding protein that acts as a transcriptional cofactor for cholesterol biosynthetic genes in the liver. Binds the lipid-responsive non-coding RNA LeXis and is required for LeXis-mediated effect on cholesterologenesis . May be a heterogeneous nuclear ribonucleoprotein (hnRNP) .

APPLICATION

To ensure optimal assay performance, AREX recommends conducting reagent titration tailored to each testing system for optimal detection results.

WB	1:500 - 1:1000
----	----------------

*Results are sample-specific. Please refer to your local assay conditions and test parameters for reference.

PRODUCT OVERVIEW

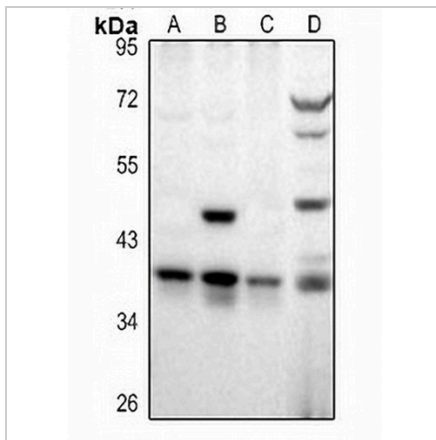
Description	Rabbit polyclonal antibody to RALY
Specificity	Recognizes endogenous levels of RALY protein.
Antibody Type	Primary antibody
Immunogen	KLH-conjugated synthetic peptide encompassing a sequence within the center region of human RALY. The exact sequence is proprietary.
Purification	The antibody was purified by immunogen affinity chromatography.
Molecular Weight	Predicted: 32 kD; Observed: 38 kD
Form/Buffer	Liquid in 0.42% Potassium phosphate, 0.87% Sodium chloride, pH 7.3, 30% glycerol, and 0.01% sodium azide.
Alternative Names	HNRPCL2; P542; RNA-binding protein Raly; Autoantigen p542; Heterogeneous nuclear ribonucleoprotein C-like 2; hnRNP core protein C-like 2; hnRNP associated with lethal yellow protein homolog
Gene Symbol	RALY
Entrez Gene	22913(Human); 19383(Mouse)
SwissProt	Q9UKM9(Human); Q64012(Mouse)

*AREX continuously optimizes our products. Webpage content may not reflect the latest updates. For inquiries, please contact info@arexbio.com or your local distributor.

*Clone Number, Reactivity, Source/Host and Clonality can be found in the product name and Key Features section above.

DATASHEET**RALY Rabbit Polyclonal Antibody**

CAT. NO. APA11424

DATA

Western blot analysis of RALY expression in Panc1 (A), A549 (B), HEK293T (C), BV2 (D) whole cell lysates. (Predicted band size: 32 kD; Observed band size: 38 kD)

STORAGE

Store at 4°C short term. For long term storage, store at -20°C, avoiding freeze/thaw cycles.

NOTE

For Research Use Only. Not for diagnostic, therapeutics, prophylactic or in vivo use.