

DATASHEET

OSR2 Rabbit Polyclonal Antibody

CAT. NO. APA11427

KEY FEATURES

| | | | |
|---------------|---|---------------|---------------------|
| Target | OSR2 | Source / Host | Rabbit |
| Reactivity | Human, Mouse, Rat, Bovine | Clonality | Polyclonal |
| Applications | WB | Conjugation | Unconjugated |
| Form / Buffer | Liquid in 0.42% Potassium phosphate, 0.87% Sodium chloride, pH 7.3, 30% glycerol, and 0.01% sodium azide. | | Storage at -20°C |

BACKGROUND

May be involved in the development of the mandibular molar tooth germ at the bud stage.

APPLICATION

To ensure optimal assay performance, AREX recommends conducting reagent titration tailored to each testing system for optimal detection results.

| | |
|----|----------------|
| WB | 1:500 - 1:1000 |
|----|----------------|

*Results are sample-specific. Please refer to your local assay conditions and test parameters for reference.

PRODUCT OVERVIEW

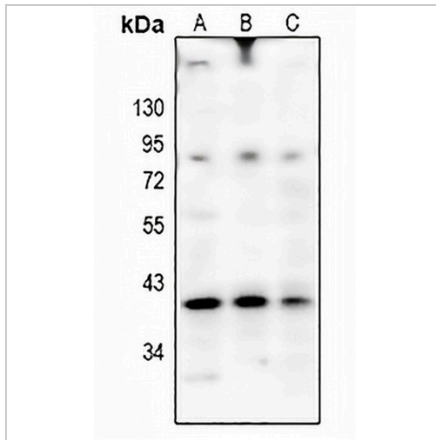
| | |
|-------------------|---|
| Description | Rabbit polyclonal antibody to OSR2 |
| Specificity | Recognizes endogenous levels of OSR2 protein. |
| Antibody Type | Primary antibody |
| Immunogen | KLH-conjugated synthetic peptide encompassing a sequence within the center region of human OSR2. The exact sequence is proprietary. |
| Purification | The antibody was purified by immunogen affinity chromatography. |
| Molecular Weight | Predicted: 35 kD; Observed: 40 kD |
| Form/Buffer | Liquid in 0.42% Potassium phosphate, 0.87% Sodium chloride, pH 7.3, 30% glycerol, and 0.01% sodium azide. |
| Alternative Names | Protein odd-skipped-related 2 |
| Gene Symbol | OSR2 |
| Entrez Gene | 116039(Human); 107587(Mouse); 315039(Rat) |
| SwissProt | Q8N2R0(Human); Q91ZD1(Mouse); Q6AY34(Rat) |

*AREX continuously optimizes our products. Webpage content may not reflect the latest updates. For inquiries, please contact info@arexbio.com or your local distributor.

*Clone Number, Reactivity, Source/Host and Clonality can be found in the product name and Key Features section above.

DATASHEET**OSR2 Rabbit Polyclonal Antibody**

CAT. NO. APA11427

DATA

Western blot analysis of OSR2 expression in Panc1 (A), SGC7901 (B), H9C2 (C) whole cell lysates. (Predicted band size: 35 kD; Observed band size: 40 kD)

STORAGE

Store at 4°C short term. For long term storage, store at -20°C, avoiding freeze/thaw cycles.

NOTE

For Research Use Only. Not for diagnostic, therapeutics, prophylactic or in vivo use.