

DATASHEET

CD218a Rabbit Polyclonal Antibody

CAT. NO. APA11430

KEY FEATURES

Target	CD218a	Source / Host	Rabbit
Reactivity	Human	Clonality	Polyclonal
Applications	WB	Conjugation	Unconjugated
Form / Buffer	Liquid in 0.42% Potassium phosphate, 0.87% Sodium chloride, pH 7.3, 30% glycerol, and 0.01% sodium azide.		Storage at-20°C

BACKGROUND

Within the IL18 receptor complex, responsible for the binding of the pro-inflammatory cytokine IL18, but not IL1A nor IL1B . Involved in IL18-mediated IFNG synthesis from T-helper 1 (Th1) cells . Contributes to IL18-induced cytokine production, either independently of SLC12A3, or as a complex with SLC12A3 .

APPLICATION

To ensure optimal assay performance, AREX recommends conducting reagent titration tailored to each testing system for optimal detection results.

WB	1:500 - 1:1000
----	----------------

*Results are sample-specific. Please refer to your local assay conditions and test parameters for reference.

PRODUCT OVERVIEW

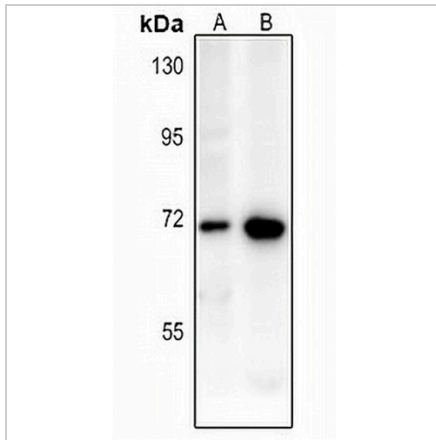
Description	Rabbit polyclonal antibody to CD218a
Specificity	Recognizes endogenous levels of CD218a protein.
Antibody Type	Primary antibody
Immunogen	KLH-conjugated synthetic peptide encompassing a sequence within the center region of human CD218a. The exact sequence is proprietary.
Purification	The antibody was purified by immunogen affinity chromatography.
Molecular Weight	Predicted: 62 kD; Observed: 70 kD
Form/Buffer	Liquid in 0.42% Potassium phosphate, 0.87% Sodium chloride, pH 7.3, 30% glycerol, and 0.01% sodium azide.
Alternative Names	IL1RRP; Interleukin-18 receptor 1; IL-18R-1; IL-18R1; CD218 antigen-like family member A; CDw218a; IL1 receptor-related protein; IL-1Rrp; IL1R-rp; CD218a
Gene Symbol	IL18R1
Entrez Gene	8809(Human)
SwissProt	Q13478(Human)

*AREX continuously optimizes our products. Webpage content may not reflect the latest updates. For inquiries, please contact info@arexbio.com or your local distributor.

*Clone Number, Reactivity, Source/Host and Clonality can be found in the product name and Key Features section above.

DATASHEET**CD218a Rabbit Polyclonal Antibody**

CAT. NO. APA11430

DATA

Western blot analysis of CD218a expression in A549 (A), LOVO (B) whole cell lysates.
(Predicted band size: 62 kD; Observed band size: 70 kD)

STORAGE

Store at 4°C short term. For long term storage, store at -20°C, avoiding freeze/thaw cycles.

NOTE

For Research Use Only. Not for diagnostic, therapeutics, prophylactic or in vivo use.