

DATASHEET

HEXO Rabbit Polyclonal Antibody

CAT. NO. APA11437

KEY FEATURES

Target	HEXO	Source / Host	Rabbit
Reactivity	Human	Clonality	Polyclonal
Applications	WB	Conjugation	Unconjugated
Form / Buffer	Liquid in 0.42% Potassium phosphate, 0.87% Sodium chloride, pH 7.3, 30% glycerol, and 0.01% sodium azide.		Storage at -20°C

BACKGROUND

RNA exonuclease that binds to the 3'-end of histone mRNAs and degrades them, suggesting that it plays an essential role in histone mRNA decay after replication . A 2' and 3'-hydroxyl groups at the last nucleotide of the histone 3'-end is required for efficient 3'-end histone mRNA exonuclease activity and degradation of RNA substrates . Also able to degrade the 3'-overhangs of short interfering RNAs (siRNAs) in vitro, suggesting a possible role as regulator of RNA interference (RNAi) . Required for binding the 5'-ACCCA-3' sequence present in stem-loop structure . Able to bind other mRNAs . Required for 5.8S rRNA 3'-end processing . Also binds to 5.8s ribosomal RNA . Binds with high affinity to the stem-loop structure of replication-dependent histone pre-mRNAs .

APPLICATION

To ensure optimal assay performance, AREX recommends conducting reagent titration tailored to each testing system for optimal detection results.

WB	1:500 - 1:1000
----	----------------

*Results are sample-specific. Please refer to your local assay conditions and test parameters for reference.

PRODUCT OVERVIEW

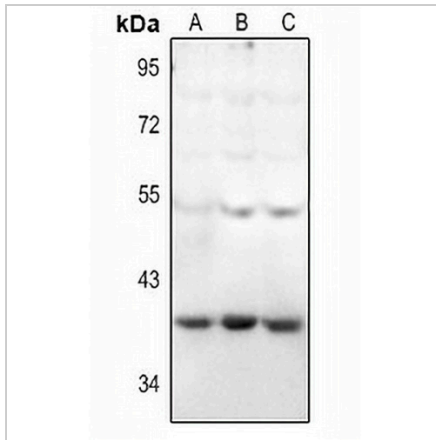
Description	Rabbit polyclonal antibody to HEXO
Specificity	Recognizes endogenous levels of HEXO protein.
Antibody Type	Primary antibody
Immunogen	KLH-conjugated synthetic peptide encompassing a sequence within the center region of human HEXO. The exact sequence is proprietary.
Purification	The antibody was purified by immunogen affinity chromatography.
Molecular Weight	Predicted: 40 kD; Observed: 40 kD
Form/Buffer	Liquid in 0.42% Potassium phosphate, 0.87% Sodium chloride, pH 7.3, 30% glycerol, and 0.01% sodium azide.
Alternative Names	3'EXO; THEX1; 3'-5' exoribonuclease 1; 3'-5' exonuclease ERI1; Eri-1 homolog; Histone mRNA 3'-end-specific exoribonuclease; Histone mRNA 3'-exonuclease 1; Protein 3'hExo; HEXO
Gene Symbol	ERI1
Entrez Gene	90459(Human)
SwissProt	Q8IV48(Human)

*AREX continuously optimizes our products. Webpage content may not reflect the latest updates. For inquiries, please contact info@arexbio.com or your local distributor.

*Clone Number, Reactivity, Source/Host and Clonality can be found in the product name and Key Features section above.

DATASHEET**HEXO Rabbit Polyclonal Antibody**

CAT. NO. APA11437

DATA

Western blot analysis of HEXO expression in SGC7901 (A), A549 (B), U87MG (C) whole cell lysates. (Predicted band size: 40 kD; Observed band size: 40 kD)

STORAGE

Store at 4°C short term. For long term storage, store at -20°C, avoiding freeze/thaw cycles.

NOTE

For Research Use Only. Not for diagnostic, therapeutics, prophylactic or in vivo use.