

DATASHEET

CD307e Rabbit Polyclonal Antibody

CAT. NO. APA11438

KEY FEATURES

Target	CD307e	Source / Host	Rabbit
Reactivity	Human	Clonality	Polyclonal
Applications	WB	Conjugation	Unconjugated
Form / Buffer	Liquid in 0.42% Potassium phosphate, 0.87% Sodium chloride, pH 7.3, 30% glycerol, and 0.01% sodium azide.		Storage at -20°C

BACKGROUND

Plays an important role in B-cell response to antigen that acts both as a negative or positive coreceptor. Inhibits B-cell receptor (BCR) signaling in the absence of CR2 stimulation but engagement with CR2 and the BCR lead to a superior calcium response compared to CR2 and BCR costimulation signaling in the absence of CR2 stimulation but engagement with CR2 and the BCR lead to a superior calcium response compared to CR2 and BCR costimulation . May be involved in B-cell development and differentiation in peripheral lymphoid organs and may be useful markers of B-cell stages. May have an immunoregulatory role in marginal zone B-cells. May play a role in fertilization .

APPLICATION

To ensure optimal assay performance, AREX recommends conducting reagent titration tailored to each testing system for optimal detection results.

WB	1:500 - 1:1000
----	----------------

*Results are sample-specific. Please refer to your local assay conditions and test parameters for reference.

PRODUCT OVERVIEW

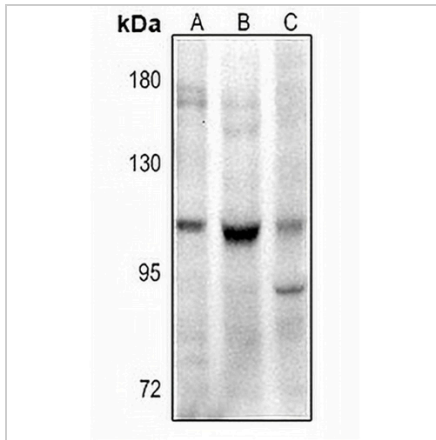
Description	Rabbit polyclonal antibody to CD307e
Specificity	Recognizes endogenous levels of CD307e protein.
Antibody Type	Primary antibody
Immunogen	KLH-conjugated synthetic peptide encompassing a sequence within the center region of human CD307e. The exact sequence is proprietary.
Purification	The antibody was purified by immunogen affinity chromatography.
Molecular Weight	Predicted: 106 kD; Observed: 106 kD
Form/Buffer	Liquid in 0.42% Potassium phosphate, 0.87% Sodium chloride, pH 7.3, 30% glycerol, and 0.01% sodium azide.
Alternative Names	FCRH5; IRTA2; Fc receptor-like protein 5; FcR-like protein 5; FcRL5; BXMAS1; Fc receptor homolog 5; FcRH5; Immune receptor translocation-associated protein 2; CD307e
Gene Symbol	FCRL5
Entrez Gene	83416(Human)
SwissProt	Q96RD9(Human)

*AREX continuously optimizes our products. Webpage content may not reflect the latest updates. For inquiries, please contact info@arexbio.com or your local distributor.

*Clone Number, Reactivity, Source/Host and Clonality can be found in the product name and Key Features section above.

DATASHEET**CD307e Rabbit Polyclonal Antibody**

CAT. NO. APA11438

DATA

Western blot analysis of CD307e expression in Jurkat (A), K562 (B), Myla2059 (C) whole cell lysates. (Predicted band size: 106 kD; Observed band size: 106 kD)

STORAGE

Store at 4°C short term. For long term storage, store at -20°C, avoiding freeze/thaw cycles.

NOTE

For Research Use Only. Not for diagnostic, therapeutics, prophylactic or in vivo use.