

DATASHEET

Thioredoxin 2 Rabbit Polyclonal Antibody

CAT. NO. APA11445

KEY FEATURES

Target	Thioredoxin 2	Source / Host	Rabbit
Reactivity	Human, Mouse, Rat, Bovine	Clonality	Polyclonal
Applications	WB	Conjugation	Unconjugated
Form / Buffer	Liquid in 0.42% Potassium phosphate, 0.87% Sodium chloride, pH 7.3, 30% glycerol, and 0.01% sodium azide.		Storage at -20°C

BACKGROUND

Important for the control of mitochondrial reactive oxygen species homeostasis, apoptosis regulation and cell viability. It is involved in various redox reactions including the reduction of protein disulfide bonds, through the reversible oxidation of its active center dithiol to a disulfide.

APPLICATION

To ensure optimal assay performance, AREX recommends conducting reagent titration tailored to each testing system for optimal detection results.

WB	1:500 - 1:1000
----	----------------

*Results are sample-specific. Please refer to your local assay conditions and test parameters for reference.

PRODUCT OVERVIEW

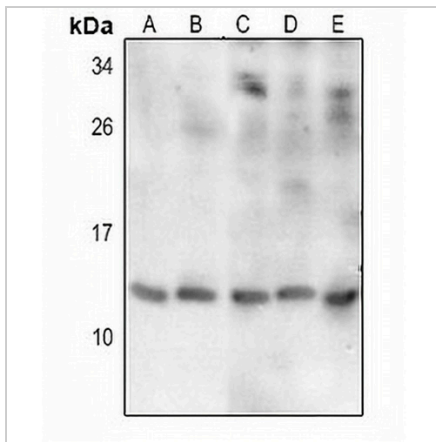
Description	Rabbit polyclonal antibody to Thioredoxin 2
Specificity	Recognizes endogenous levels of Thioredoxin 2 protein.
Antibody Type	Primary antibody
Immunogen	KLH-conjugated synthetic peptide encompassing a sequence within the C-term region of human Thioredoxin 2. The exact sequence is proprietary.
Purification	The antibody was purified by immunogen affinity chromatography.
Molecular Weight	Predicted: 18 kD; Observed: 12 kD
Form/Buffer	Liquid in 0.42% Potassium phosphate, 0.87% Sodium chloride, pH 7.3, 30% glycerol, and 0.01% sodium azide.
Alternative Names	TRX2; Thioredoxin mitochondrial; MTRX; Mt-Trx; Thioredoxin-2
Gene Symbol	TXN2
Entrez Gene	25828(Human); 56551(Mouse); 79462(Rat)
SwissProt	Q99757(Human); P97493(Mouse); P97615(Rat)

*AREX continuously optimizes our products. Webpage content may not reflect the latest updates. For inquiries, please contact info@arexbio.com or your local distributor.

*Clone Number, Reactivity, Source/Host and Clonality can be found in the product name and Key Features section above.

DATASHEET**Thioredoxin 2 Rabbit Polyclonal Antibody**

CAT. NO. APA11445

DATA

Western blot analysis of Thioredoxin 2 expression in HEK293T (A), HeLa (B), mouse liver (C), rat lung (D), rat liver (E) whole cell lysates. (Predicted band size: 18 kD; Observed band size: 12 kD)

STORAGE

Store at 4°C short term. For long term storage, store at -20°C, avoiding freeze/thaw cycles.

NOTE

For Research Use Only. Not for diagnostic, therapeutics, prophylactic or in vivo use.