

DATASHEET

MMP9 Rabbit Polyclonal Antibody

CAT. NO. APA11449

KEY FEATURES

| | | | |
|---------------|---|---------------|--------------------|
| Target | MMP9 | Source / Host | Rabbit |
| Reactivity | Human, Mouse | Clonality | Polyclonal |
| Applications | WB, IF/ICC | Conjugation | Unconjugated |
| Form / Buffer | Liquid in 0.42% Potassium phosphate, 0.87% Sodium chloride, pH 7.3, 30% glycerol, and 0.01% sodium azide. | | Storage at-20°C |

BACKGROUND

Matrix metalloproteinase that plays an essential role in local proteolysis of the extracellular matrix and in leukocyte migration . Could play a role in bone osteoclastic resorption . Cleaves KiSS1 at a Gly-|-Leu bond . Cleaves NINJ1 to generate the Secreted ninjurin-1 form . Cleaves type IV and type V collagen into large C-terminal three quarter fragments and shorter N-terminal one quarter fragments . Degrades fibronectin but not laminin or Pz-peptide.

APPLICATION

To ensure optimal assay performance, AREX recommends conducting reagent titration tailored to each testing system for optimal detection results.

| | |
|--------|----------------|
| WB | 1:500 - 1:1000 |
| IF/ICC | 1:50 - 1:200 |

*Results are sample-specific. Please refer to your local assay conditions and test parameters for reference.

PRODUCT OVERVIEW

| | |
|-------------------|---|
| Description | Rabbit polyclonal antibody to MMP9 |
| Specificity | Recognizes endogenous levels of MMP9 protein. |
| Antibody Type | Primary antibody |
| Immunogen | KLH-conjugated synthetic peptide encompassing a sequence within the N-term region of human MMP9. The exact sequence is proprietary. |
| Purification | The antibody was purified by immunogen affinity chromatography. |
| Molecular Weight | Predicted: 78 kD; Observed: 100 kD |
| Form/Buffer | Liquid in 0.42% Potassium phosphate, 0.87% Sodium chloride, pH 7.3, 30% glycerol, and 0.01% sodium azide. |
| Alternative Names | CLG4B; Matrix metalloproteinase-9; MMP-9; 92 kDa gelatinase; 92 kDa type IV collagenase; Gelatinase B; GELB |
| Gene Symbol | MMP9 |
| Entrez Gene | 4318(Human); 17395(Mouse) |
| SwissProt | P14780(Human); P41245(Mouse) |

*AREX continuously optimizes our products. Webpage content may not reflect the latest updates. For inquiries, please contact info@arexbio.com or your local distributor.

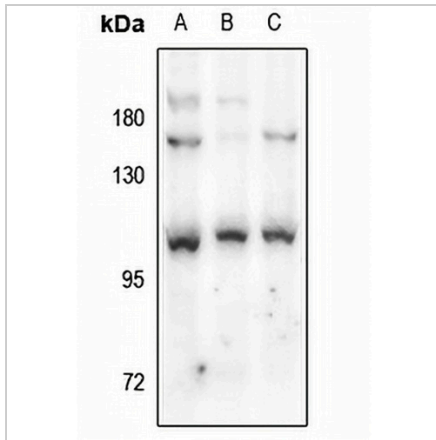
*Clone Number, Reactivity, Source/Host and Clonality can be found in the product name and Key Features section above.

DATASHEET

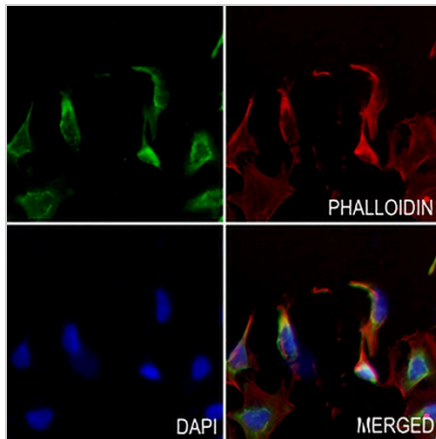
MMP9 Rabbit Polyclonal Antibody

CAT. NO. APA11449

DATA



Western blot analysis of MMP9 expression in Myla2059 (A), Jurkat (B), Raw264.7 (C) whole cell lysates. (Predicted band size: 78 kD; Observed band size: 100 kD)



Immunofluorescent analysis of MMP9 staining in MOVAS cells. Formalin-fixed cells were permeabilized with 0.1% Triton X-100 in TBS for 5-10 minutes and blocked with 3% BSA-PBS for 30 minutes at room temperature. Cells were probed with the primary antibody in 3% BSA-PBS and incubated overnight at 4 °C in a humidified chamber. Cells were washed with PBST and incubated with a AREX® Fluor 488 -conjugated secondary antibody (green) in PBS at room temperature in the dark. Phalloidin - AREX® Fluor 594 was used to stain Actin filaments (red). DAPI was used to stain the cell nuclei (blue).

STORAGE

Store at 4°C short term. For long term storage, store at -20°C, avoiding freeze/thaw cycles.

NOTE

For Research Use Only. Not for diagnostic, therapeutics, prophylactic or in vivo use.