

DATASHEET

FOXH1 Rabbit Polyclonal Antibody

CAT. NO. APA11501

KEY FEATURES

Target	FOXH1	Source / Host	Rabbit
Reactivity	Human, Bovine	Clonality	Polyclonal
Applications	WB, IF/ICC	Conjugation	Unconjugated
Form / Buffer	Liquid in 0.42% Potassium phosphate, 0.87% Sodium chloride, pH 7.3, 30% glycerol, and 0.01% sodium azide.		Storage at -20°C

BACKGROUND

Transcriptional activator. Recognizes and binds to the DNA sequence 5'-TGT[GT][GT]ATT-3'. Required for induction of the gooseoid (GSC) promoter by TGF-beta or activin signaling. Forms a transcriptionally active complex containing FOXH1/SMAD2/SMAD4 on a site on the GSC promoter called TARE (TGF-beta/activin response element).

APPLICATION

To ensure optimal assay performance, AREX recommends conducting reagent titration tailored to each testing system for optimal detection results.

WB	1:500 - 1:1000
IF/ICC	1:50 - 1:200

*Results are sample-specific. Please refer to your local assay conditions and test parameters for reference.

PRODUCT OVERVIEW

Description	Rabbit polyclonal antibody to FOXH1
Specificity	Recognizes endogenous levels of FOXH1 protein.
Antibody Type	Primary antibody
Immunogen	KLH-conjugated synthetic peptide encompassing a sequence within the N-term region of human FOXH1. The exact sequence is proprietary.
Purification	The antibody was purified by immunogen affinity chromatography.
Molecular Weight	Predicted: 39 kD; Observed: 50 kD
Form/Buffer	Liquid in 0.42% Potassium phosphate, 0.87% Sodium chloride, pH 7.3, 30% glycerol, and 0.01% sodium azide.
Alternative Names	FAST1; FAST2; Forkhead box protein H1; Forkhead activin signal transducer 1; Fast-1; hFAST-1; Forkhead activin signal transducer 2; Fast-2
Gene Symbol	FOXH1
Entrez Gene	8928(Human)
SwissProt	O75593(Human)

*AREX continuously optimizes our products. Webpage content may not reflect the latest updates. For inquiries, please contact info@arexbio.com or your local distributor.

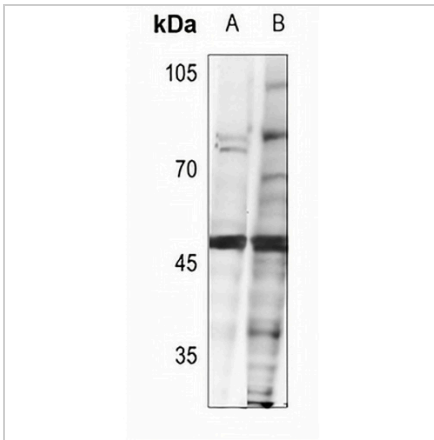
*Clone Number, Reactivity, Source/Host and Clonality can be found in the product name and Key Features section above.

DATASHEET

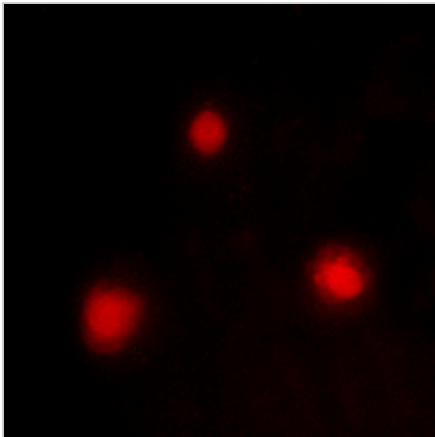
FOXH1 Rabbit Polyclonal Antibody

CAT. NO. APA11501

DATA



Western blot analysis of FOXH1 expression in SGC7901 (A), Myla2059 (B) whole cell lysates. (Predicted band size: 39 kD; Observed band size: 50 kD)



Immunofluorescent analysis of FOXH1 staining in A549 cells. Formalin-fixed cells were permeabilized with 0.1% Triton X-100 in TBS for 5-10 minutes and blocked with 3% BSA-PBS for 30 minutes at room temperature. Cells were probed with the primary antibody in 3% BSA-PBS and incubated overnight at 4 °C in a humidified chamber. Cells were washed with PBST and incubated with a Alexa Fluor 594-conjugated secondary antibody (red) in PBS at room temperature in the dark.

STORAGE

Store at 4°C short term. For long term storage, store at -20°C, avoiding freeze/thaw cycles.

NOTE

For Research Use Only. Not for diagnostic, therapeutics, prophylactic or in vivo use.