

DATASHEET

Rhodopsin (Phospho-S334) Rabbit Polyclonal Antibody

CAT. NO. APA11512

KEY FEATURES

Target	Rhodopsin (Phospho-S334)	Source / Host	Rabbit
Reactivity	Human, Mouse	Clonality	Polyclonal
Applications	WB, IHC	Conjugation	Unconjugated
Form / Buffer	Liquid in 0.42% Potassium phosphate, 0.87% Sodium chloride, pH 7.3, 30% glycerol, and 0.01% sodium azide.	Storage	at-20°C

BACKGROUND

Photoreceptor required for image-forming vision at low light intensity . Required for photoreceptor cell viability after birth . Light-induced isomerization of the chromophore 11-cis-retinal to all-trans-retinal triggers a conformational change that activates signaling via G-proteins . Subsequent receptor phosphorylation mediates displacement of the bound G-protein alpha subunit by the arrestin SAG and terminates signaling .

APPLICATION

To ensure optimal assay performance, AREX recommends conducting reagent titration tailored to each testing system for optimal detection results.

WB	1:500 - 1:1000
IHC	1:50 - 1:200

*Results are sample-specific. Please refer to your local assay conditions and test parameters for reference.

PRODUCT OVERVIEW

Description	Rabbit polyclonal antibody to Rhodopsin (Phospho-S334)
Specificity	Recognizes endogenous levels of Rhodopsin protein only when phosphorylated at S334.
Antibody Type	Primary antibody
Immunogen	KLH-conjugated synthetic phosphopeptide corresponding to residues surrounding S334 of human Rhodopsin protein. The exact sequence is proprietary.
Purification	The antibody was purified by immunogen affinity chromatography.
Molecular Weight	Predicted: 38 kD; Observed: 37; 75; 150 kD
Form/Buffer	Liquid in 0.42% Potassium phosphate, 0.87% Sodium chloride, pH 7.3, 30% glycerol, and 0.01% sodium azide.
Alternative Names	OPN2; Rhodopsin; Opsin-2
Gene Symbol	RHO
Entrez Gene	6010(Human); 212541(Mouse)
SwissProt	P08100(Human); P15409(Mouse)

*AREX continuously optimizes our products. Webpage content may not reflect the latest updates. For inquiries, please contact info@arexbio.com or your local distributor.

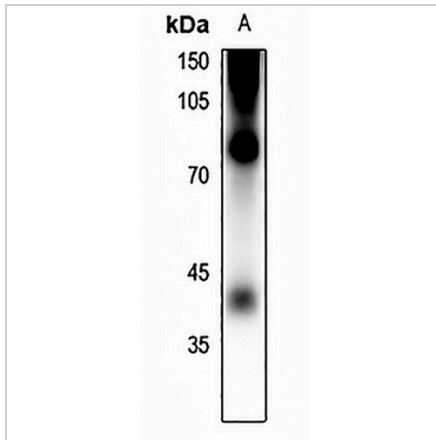
*Clone Number, Reactivity, Source/Host and Clonality can be found in the product name and Key Features section above.

DATASHEET

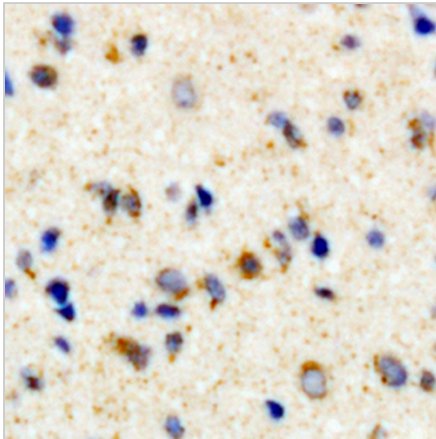
Rhodopsin (Phospho-S334) Rabbit Polyclonal Antibody

CAT. NO. APA11512

DATA



Western blot analysis of Rhodopsin (Phospho-S334) expression in mouse eyes (A) whole cell lysates. (Predicted band size: 38 kD; Observed band size: 37; 75; 150 kD)



Immunohistochemical analysis of Rhodopsin (Phospho-S334) staining in human brain formalin fixed paraffin embedded tissue section. The section was pre-treated using heat mediated antigen retrieval with sodium citrate buffer (pH 6.0). The section was then incubated with the antibody at room temperature and detected using an HRP conjugated compact polymer system. DAB was used as the chromogen. The section was then counterstained with haematoxylin and mounted with DPX.

STORAGE

Store at 4°C short term. For long term storage, store at -20°C, avoiding freeze/thaw cycles.

NOTE

For Research Use Only. Not for diagnostic, therapeutics, prophylactic or in vivo use.