

**DATASHEET**

**Topoisomerase 2 alpha (Phospho-S1213) Rabbit Polyclonal Antibody**

CAT. NO. APA11517

**KEY FEATURES**

Target	Topoisomerase 2 alpha (Phospho-S1213)	Source / Host	Rabbit
Reactivity	Human	Clonality	Polyclonal
Applications	WB	Conjugation	Unconjugated
Form / Buffer	Liquid in 0.42% Potassium phosphate, 0.87% Sodium chloride, pH 7.3, 30% glycerol, and 0.01% sodium azide.		Storage at -20°C

**BACKGROUND**

Key decatenating enzyme that alters DNA topology by binding to two double-stranded DNA molecules, generating a double-stranded break in one of the strands, passing the intact strand through the broken strand, and religating the broken strand . May play a role in regulating the period length of BMAL1 transcriptional oscillation .

**APPLICATION**

To ensure optimal assay performance, AREX recommends conducting reagent titration tailored to each testing system for optimal detection results.

WB	1:500 - 1:1000
----	----------------

\*Results are sample-specific. Please refer to your local assay conditions and test parameters for reference.

**PRODUCT OVERVIEW**

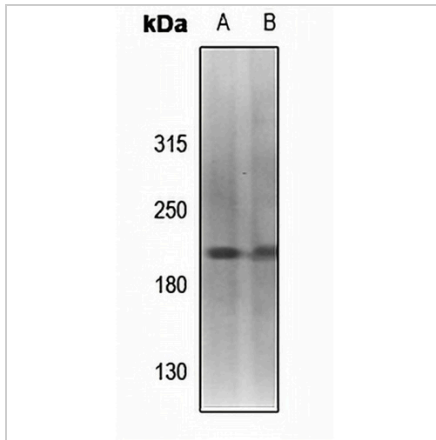
Description	Rabbit polyclonal antibody to Topoisomerase 2 alpha (Phospho-S1213)
Specificity	Recognizes endogenous levels of Topoisomerase 2 alpha protein only when phosphorylated at S1213.
Antibody Type	Primary antibody
Immunogen	KLH-conjugated synthetic phosphopeptide corresponding to residues surrounding S1213 of human Topoisomerase 2 alpha protein. The exact sequence is proprietary.
Purification	The antibody was purified by immunogen affinity chromatography.
Molecular Weight	Predicted: 174 kD; Observed: 190 kD
Form/Buffer	Liquid in 0.42% Potassium phosphate, 0.87% Sodium chloride, pH 7.3, 30% glycerol, and 0.01% sodium azide.
Alternative Names	TOP2; DNA topoisomerase 2-alpha; DNA topoisomerase II alpha isozyme
Gene Symbol	TOP2A
Entrez Gene	7153(Human)
SwissProt	P11388(Human)

\*AREX continuously optimizes our products. Webpage content may not reflect the latest updates. For inquiries, please contact [info@arexbio.com](mailto:info@arexbio.com) or your local distributor.

\*Clone Number, Reactivity, Source/Host and Clonality can be found in the product name and Key Features section above.

**DATASHEET****Topoisomerase 2 alpha (Phospho-S1213) Rabbit Polyclonal Antibody**

CAT. NO. APA11517

**DATA**

Western blot analysis of Topoisomerase 2 alpha (Phospho-S1213) expression in SHSY5Y (A), Myla2059 (B) whole cell lysates. (Predicted band size: 174 kD; Observed band size: 190 kD)

**STORAGE**

Store at 4°C short term. For long term storage, store at -20°C, avoiding freeze/thaw cycles.

**NOTE**

For Research Use Only. Not for diagnostic, therapeutics, prophylactic or in vivo use.