

**DATASHEET**

**14-3-3 sigma (Phospho-S186) Rabbit Polyclonal Antibody**

CAT. NO. APA11521

**KEY FEATURES**

Target	14-3-3 sigma (Phospho-S186)	Source / Host	Rabbit
Reactivity	Human, Mouse, Rat, Bovine, Pig, Sheep	Clonality	Polyclonal
Applications	WB	Conjugation	Unconjugated
Form / Buffer	Liquid in 0.42% Potassium phosphate, 0.87% Sodium chloride, pH 7.3, 30% glycerol, and 0.01% sodium azide.		Storage at -20°C

**BACKGROUND**

Adapter protein implicated in the regulation of a large spectrum of both general and specialized signaling pathways . Binds to a large number of partners, usually by recognition of a phosphoserine or phosphothreonine motif . Binding generally results in the modulation of the activity of the binding partner . Promotes cytosolic retention of GBP1 GTPase by binding to phosphorylated GBP1, thereby inhibiting the innate immune response . Also acts as a TP53/p53-regulated inhibitor of G2/M progression . When bound to KRT17, regulates protein synthesis and epithelial cell growth by stimulating Akt/mTOR pathway .

**APPLICATION**

To ensure optimal assay performance, AREX recommends conducting reagent titration tailored to each testing system for optimal detection results.

WB	1:500 - 1:1000
----	----------------

\*Results are sample-specific. Please refer to your local assay conditions and test parameters for reference.

**PRODUCT OVERVIEW**

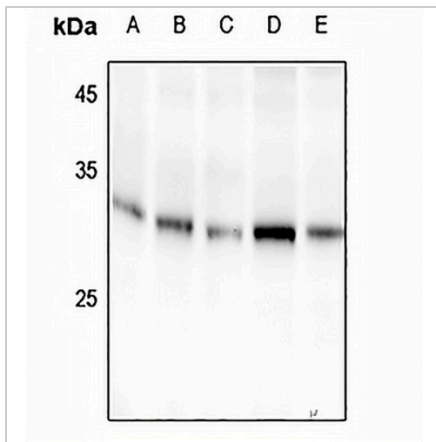
Description	Rabbit polyclonal antibody to 14-3-3 sigma (Phospho-S186)
Specificity	Recognizes endogenous levels of 14-3-3 sigma protein only when phosphorylated at S186.
Antibody Type	Primary antibody
Immunogen	KLH-conjugated synthetic phosphopeptide corresponding to residues surrounding S186 of human 14-3-3 sigma protein. The exact sequence is proprietary.
Purification	The antibody was purified by immunogen affinity chromatography.
Molecular Weight	Predicted: 27 kD; Observed: 30 kD
Form/Buffer	Liquid in 0.42% Potassium phosphate, 0.87% Sodium chloride, pH 7.3, 30% glycerol, and 0.01% sodium azide.
Alternative Names	HME1; 14-3-3 protein sigma; Epithelial cell marker protein 1; Stratifin
Gene Symbol	SFN
Entrez Gene	2810(Human); 55948(Mouse)
SwissProt	P31947(Human); O70456(Mouse)

\*AREX continuously optimizes our products. Webpage content may not reflect the latest updates. For inquiries, please contact [info@arexbio.com](mailto:info@arexbio.com) or your local distributor.

\*Clone Number, Reactivity, Source/Host and Clonality can be found in the product name and Key Features section above.

**DATASHEET****14-3-3 sigma (Phospho-S186) Rabbit Polyclonal Antibody**

CAT. NO. APA11521

**DATA**

Western blot analysis of 14-3-3 sigma (Phospho-S186) expression in COS7 (A), MEF (B), SHSY5Y (C), HCT116 (D), A549 (E) whole cell lysates. (Predicted band size: 27 kD; Observed band size: 30 kD)

**STORAGE**

Store at 4°C short term. For long term storage, store at -20°C, avoiding freeze/thaw cycles.

**NOTE**

For Research Use Only. Not for diagnostic, therapeutics, prophylactic or in vivo use.