

**DATASHEET**

**MRP5 Rabbit Polyclonal Antibody**

CAT. NO. APA11559

**KEY FEATURES**

Target	MRP5	Source / Host	Rabbit
Reactivity	Human, Mouse	Clonality	Polyclonal
Applications	WB	Conjugation	Unconjugated
Form / Buffer	Liquid in 0.42% Potassium phosphate, 0.87% Sodium chloride, pH 7.3, 30% glycerol, and 0.01% sodium azide.		Storage at-20°C

**BACKGROUND**

ATP-dependent transporter of the ATP-binding cassette (ABC) family that actively extrudes physiological compounds, and xenobiotics from cells. Mediates ATP-dependent transport of endogenous metabolites such as cAMP and cGMP, folic acid and N-lactoyl-amino acids (in vitro) family that actively extrudes physiological compounds, and xenobiotics from cells. Mediates ATP-dependent transport of endogenous metabolites such as cAMP and cGMP, folic acid and N-lactoyl-amino acids (in vitro) . Also acts as a general glutamate conjugate and analog transporter that can limit the brain levels of endogenous metabolites, drugs, and toxins . Confers resistance to the antiviral agent PMEA .

**APPLICATION**

To ensure optimal assay performance, AREX recommends conducting reagent titration tailored to each testing system for optimal detection results.

WB	1:500 - 1:1000
----	----------------

\*Results are sample-specific. Please refer to your local assay conditions and test parameters for reference.

**PRODUCT OVERVIEW**

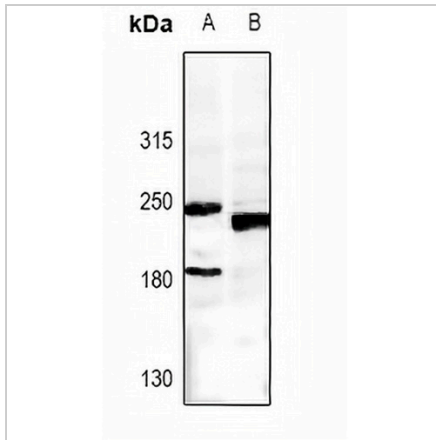
Description	Rabbit polyclonal antibody to MRP5
Specificity	Recognizes endogenous levels of MRP5 protein.
Antibody Type	Primary antibody
Immunogen	KLH-conjugated synthetic peptide encompassing a sequence within the center region of human MRP5. The exact sequence is proprietary.
Purification	The antibody was purified by immunogen affinity chromatography.
Molecular Weight	Predicted: 160 kD; Observed: 180; 250 kD
Form/Buffer	Liquid in 0.42% Potassium phosphate, 0.87% Sodium chloride, pH 7.3, 30% glycerol, and 0.01% sodium azide.
Alternative Names	MRP5; Multidrug resistance-associated protein 5; ATP-binding cassette sub-family C member 5; Multi-specific organic anion transporter C; MOAT-C; SMRP; pABC11
Gene Symbol	ABCC5
Entrez Gene	10057(Human); 27416(Mouse)
SwissProt	O15440(Human); Q9R1X5(Mouse)

\*AREX continuously optimizes our products. Webpage content may not reflect the latest updates. For inquiries, please contact [info@arexbio.com](mailto:info@arexbio.com) or your local distributor.

\*Clone Number, Reactivity, Source/Host and Clonality can be found in the product name and Key Features section above.

**DATASHEET****MRP5 Rabbit Polyclonal Antibody**

CAT. NO. APA11559

**DATA**

Western blot analysis of MRP5 expression in Myla2059 (A), CT26 (B) whole cell lysates.  
(Predicted band size: 160 kD; Observed band size: 180; 250 kD)

**STORAGE**

Store at 4°C short term. For long term storage, store at -20°C, avoiding freeze/thaw cycles.

**NOTE**

For Research Use Only. Not for diagnostic, therapeutics, prophylactic or in vivo use.