

DATASHEET

Complement C1S LC Rabbit Polyclonal Antibody

CAT. NO. APA11573

KEY FEATURES

Target	Complement C1S LC	Source / Host	Rabbit
Reactivity	Human, Rat	Clonality	Polyclonal
Applications	WB	Conjugation	Unconjugated
Form / Buffer	Liquid in 0.42% Potassium phosphate, 0.87% Sodium chloride, pH 7.3, 30% glycerol, and 0.01% sodium azide.		Storage at -20°C

BACKGROUND

Component of the complement C1 complex, a multiprotein complex that initiates the classical pathway of the complement system, a cascade of proteins that leads to phagocytosis and breakdown of pathogens and signaling that strengthens the adaptive immune system. C1S is activated following association of the C1 complex with immunoglobulins (IgG or IgM) complexed with antigens to form antigen-antibody complexes on the surface of pathogens. C1S is cleaved and activated by C1R to generate C1s subcomponent heavy and light chains. C1s subcomponent light chain then cleaves and activates C2 and C4, the next components of the classical complement pathway.

APPLICATION

To ensure optimal assay performance, AREX recommends conducting reagent titration tailored to each testing system for optimal detection results.

WB	1:500 - 1:1000
----	----------------

*Results are sample-specific. Please refer to your local assay conditions and test parameters for reference.

PRODUCT OVERVIEW

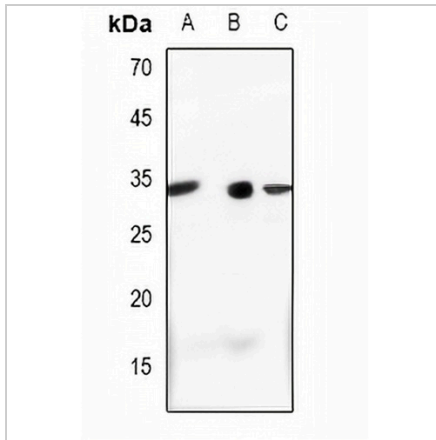
Description	Rabbit polyclonal antibody to Complement C1S LC
Specificity	Recognizes endogenous levels of Complement C1S LC protein.
Antibody Type	Primary antibody
Immunogen	KLH-conjugated synthetic peptide encompassing a sequence within the center region of human Complement C1S LC. The exact sequence is proprietary.
Purification	The antibody was purified by immunogen affinity chromatography.
Molecular Weight	Predicted: 76 kD; Observed: 29 kD
Form/Buffer	Liquid in 0.42% Potassium phosphate, 0.87% Sodium chloride, pH 7.3, 30% glycerol, and 0.01% sodium azide.
Alternative Names	Complement C1s subcomponent; C1 esterase; Complement component 1 subcomponent s
Gene Symbol	C1S
Entrez Gene	716(Human); 192262(Rat)
SwissProt	P09871(Human); Q6P6T1(Rat)

*AREX continuously optimizes our products. Webpage content may not reflect the latest updates. For inquiries, please contact info@arexbio.com or your local distributor.

*Clone Number, Reactivity, Source/Host and Clonality can be found in the product name and Key Features section above.

DATASHEET**Complement C1S LC Rabbit Polyclonal Antibody**

CAT. NO. APA11573

DATA

Western blot analysis of Complement C1S LC expression in H1688 (A), A549 (B), rat liver (C) whole cell lysates. (Predicted band size: 76 kD; Observed band size: 29 kD)

STORAGE

Store at 4°C short term. For long term storage, store at -20°C, avoiding freeze/thaw cycles.

NOTE

For Research Use Only. Not for diagnostic, therapeutics, prophylactic or in vivo use.