

**DATASHEET**

**MMP9 Rabbit Polyclonal Antibody**

CAT. NO. APA11574

**KEY FEATURES**

Target	MMP9	Source / Host	Rabbit
Reactivity	Human	Clonality	Polyclonal
Applications	WB	Conjugation	Unconjugated
Form / Buffer	Liquid in 0.42% Potassium phosphate, 0.87% Sodium chloride, pH 7.3, 30% glycerol, and 0.01% sodium azide.		Storage at -20°C

**BACKGROUND**

Matrix metalloproteinase that plays an essential role in local proteolysis of the extracellular matrix and in leukocyte migration . Could play a role in bone osteoclastic resorption . Cleaves KiSS1 at a Gly-|-Leu bond . Cleaves NINJ1 to generate the Secreted ninjurin-1 form . Cleaves type IV and type V collagen into large C-terminal three quarter fragments and shorter N-terminal one quarter fragments . Degrades fibronectin but not laminin or Pz-peptide.

**APPLICATION**

To ensure optimal assay performance, AREX recommends conducting reagent titration tailored to each testing system for optimal detection results.

WB	1:500 - 1:1000
----	----------------

\*Results are sample-specific. Please refer to your local assay conditions and test parameters for reference.

**PRODUCT OVERVIEW**

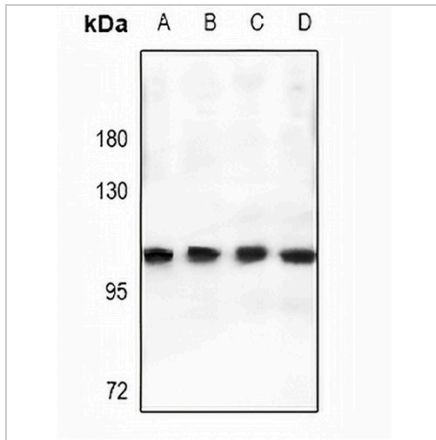
Description	Rabbit polyclonal antibody to MMP9
Specificity	Recognizes endogenous levels of MMP9 protein.
Antibody Type	Primary antibody
Immunogen	KLH-conjugated synthetic peptide encompassing a sequence within the N-term region of human MMP9. The exact sequence is proprietary.
Purification	The antibody was purified by immunogen affinity chromatography.
Molecular Weight	Predicted: 78 kD; Observed: 100 kD
Form/Buffer	Liquid in 0.42% Potassium phosphate, 0.87% Sodium chloride, pH 7.3, 30% glycerol, and 0.01% sodium azide.
Alternative Names	CLG4B; Matrix metalloproteinase-9; MMP-9; 92 kDa gelatinase; 92 kDa type IV collagenase; Gelatinase B; GELB
Gene Symbol	MMP9
Entrez Gene	4318(Human)
SwissProt	P14780(Human)

\*AREX continuously optimizes our products. Webpage content may not reflect the latest updates. For inquiries, please contact [info@arexbio.com](mailto:info@arexbio.com) or your local distributor.

\*Clone Number, Reactivity, Source/Host and Clonality can be found in the product name and Key Features section above.

**DATASHEET****MMP9 Rabbit Polyclonal Antibody**

CAT. NO. APA11574

**DATA**

Western blot analysis of MMP9 expression in Myla2059 (A), Jurkat (B), K562 (C), MCF7 (D) whole cell lysates. (Predicted band size: 78 kD; Observed band size: 100 kD)

**STORAGE**

Store at 4°C short term. For long term storage, store at -20°C, avoiding freeze/thaw cycles.

**NOTE**

For Research Use Only. Not for diagnostic, therapeutics, prophylactic or in vivo use.