

## DATASHEET

# GPR146 Rabbit Polyclonal Antibody

CAT. NO. APA11575

### KEY FEATURES

Target	GPR146	Source / Host	Rabbit
Reactivity	Human, Rat	Clonality	Polyclonal
Applications	WB, IF/ICC	Conjugation	Unconjugated
Form / Buffer	Liquid in 0.42% Potassium phosphate, 0.87% Sodium chloride, pH 7.3, 30% glycerol, and 0.01% sodium azide.		Storage at -20°C

### BACKGROUND

G-protein coupled receptor required for the regulation of plasma cholesterol levels. Receptor for CHLSN, a gut derived hormone which mediates an inhibitory effect of intestinal cholesterol absorption on hepatic cholesterol synthesis. Cholesin-binding exerts an antagonistic effect by inhibiting PKA signaling and suppressing SREBF2-controlled cholesterol in the liver.

### APPLICATION

To ensure optimal assay performance, AREX recommends conducting reagent titration tailored to each testing system for optimal detection results.

WB	1:500 - 1:1000
IF/ICC	1:50 - 1:200

\*Results are sample-specific. Please refer to your local assay conditions and test parameters for reference.

### PRODUCT OVERVIEW

Description	Rabbit polyclonal antibody to GPR146
Specificity	Recognizes endogenous levels of GPR146 protein.
Antibody Type	Primary antibody
Immunogen	KLH-conjugated synthetic peptide encompassing a sequence within the center region of human GPR146. The exact sequence is proprietary.
Purification	The antibody was purified by immunogen affinity chromatography.
Molecular Weight	Predicted: 36 kD; Observed: 37 kD
Form/Buffer	Liquid in 0.42% Potassium phosphate, 0.87% Sodium chloride, pH 7.3, 30% glycerol, and 0.01% sodium azide.
Alternative Names	PGR8; Probable G-protein coupled receptor 146; G-protein coupled receptor PGR8
Gene Symbol	GPR146
Entrez Gene	115330(Human)
SwissProt	Q96CH1(Human)

\*AREX continuously optimizes our products. Webpage content may not reflect the latest updates. For inquiries, please contact [info@arexbio.com](mailto:info@arexbio.com) or your local distributor.

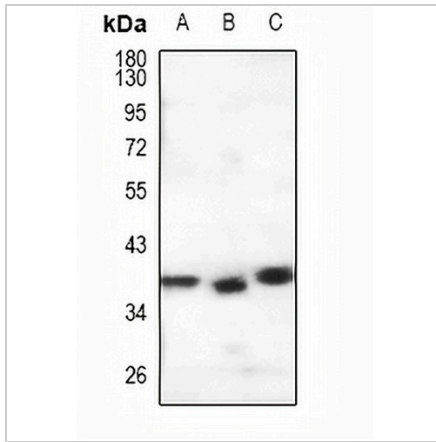
\*Clone Number, Reactivity, Source/Host and Clonality can be found in the product name and Key Features section above.

**DATASHEET**

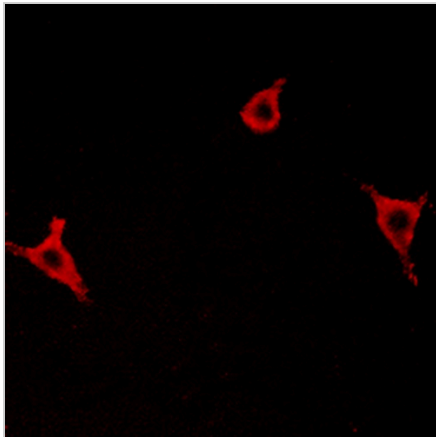
**GPR146 Rabbit Polyclonal Antibody**

CAT. NO. APA11575

**DATA**



Western blot analysis of GPR146 expression in A549 (A), HeLa (B), rat lung (C) whole cell lysates. (Predicted band size: 36 kD; Observed band size: 37 kD)



Immunofluorescent analysis of GPR146 staining in LOVO cells. Formalin-fixed cells were permeabilized with 0.1% Triton X-100 in TBS for 5-10 minutes and blocked with 3% BSA-PBS for 30 minutes at room temperature. Cells were probed with the primary antibody in 3% BSA-PBS and incubated overnight at 4 °C in a humidified chamber. Cells were washed with PBST and incubated with a Alexa Fluor 594-conjugated secondary antibody (red) in PBS at room temperature in the dark.

**STORAGE**

Store at 4°C short term. For long term storage, store at -20°C, avoiding freeze/thaw cycles.

**NOTE**

For Research Use Only. Not for diagnostic, therapeutics, prophylactic or in vivo use.