

DATASHEET

mGLUR2 Rabbit Polyclonal Antibody

CAT. NO. APA11577

KEY FEATURES

| | | | |
|---------------|---|---------------|---------------------|
| Target | mGLUR2 | Source / Host | Rabbit |
| Reactivity | Human, Mouse, Rat | Clonality | Polyclonal |
| Applications | WB, IHC, IF/ICC | Conjugation | Unconjugated |
| Form / Buffer | Liquid in 0.42% Potassium phosphate, 0.87% Sodium chloride, pH 7.3, 30% glycerol, and 0.01% sodium azide. | | Storage at -20°C |

BACKGROUND

Dimeric G protein-coupled receptor which is activated by the excitatory neurotransmitter L-glutamate . Plays critical roles in modulating synaptic transmission and neuronal excitability. Upon activation by glutamate, inhibits presynaptic calcium channels, reducing further glutamate release and dampening excitatory signaling . Mechanistically, ligand binding causes a conformation change that triggers signaling via guanine nucleotide-binding proteins (G proteins) and modulates the activity of down-stream effectors, such as adenylate cyclase. May mediate suppression of neurotransmission or may be involved in synaptogenesis or synaptic stabilization.

APPLICATION

To ensure optimal assay performance, AREX recommends conducting reagent titration tailored to each testing system for optimal detection results.

| | |
|--------|----------------|
| WB | 1:500 - 1:1000 |
| IHC | 1:50 - 1:200 |
| IF/ICC | 1:50 - 1:200 |

*Results are sample-specific. Please refer to your local assay conditions and test parameters for reference.

PRODUCT OVERVIEW

| | |
|-------------------|---|
| Description | Rabbit polyclonal antibody to mGLUR2 |
| Specificity | Recognizes endogenous levels of mGLUR2 protein. |
| Antibody Type | Primary antibody |
| Immunogen | KLH-conjugated synthetic peptide encompassing a sequence within the center region of human mGLUR2. The exact sequence is proprietary. |
| Purification | The antibody was purified by immunogen affinity chromatography. |
| Molecular Weight | Predicted: 95 kD; Observed: 110 kD |
| Form/Buffer | Liquid in 0.42% Potassium phosphate, 0.87% Sodium chloride, pH 7.3, 30% glycerol, and 0.01% sodium azide. |
| Alternative Names | GPRC1B; MGLUR2; Metabotropic glutamate receptor 2; mGluR2 |
| Gene Symbol | GRM2 |
| Entrez Gene | 2912(Human); 108068(Mouse); 24415(Rat) |
| SwissProt | Q14416(Human); Q14BI2(Mouse); P31421(Rat) |

*AREX continuously optimizes our products. Webpage content may not reflect the latest updates. For inquiries, please contact info@arexbio.com or your local distributor.

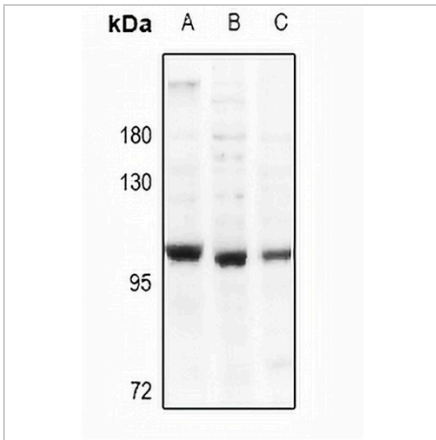
*Clone Number, Reactivity, Source/Host and Clonality can be found in the product name and Key Features section above.

DATASHEET

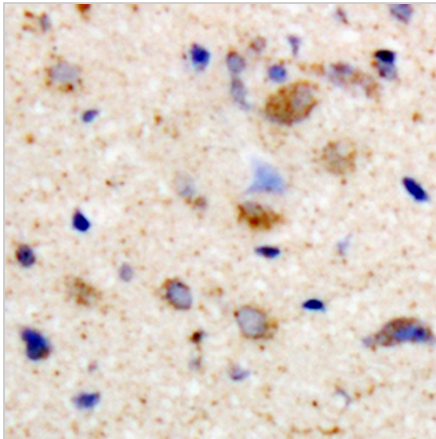
mGLUR2 Rabbit Polyclonal Antibody

CAT. NO. APA11577

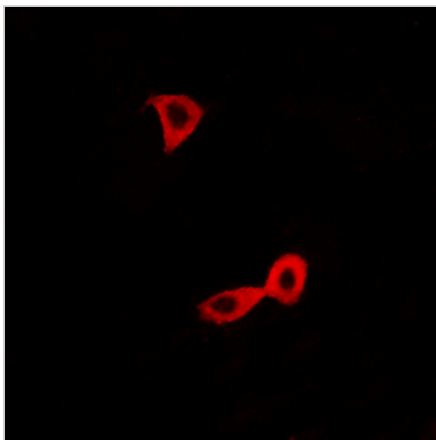
DATA



Western blot analysis of mGLUR2 expression in U87MG (A), A375 (B), C6 (C) whole cell lysates. (Predicted band size: 95 kD; Observed band size: 110 kD)



Immunohistochemical analysis of mGLUR2 staining in human brain formalin fixed paraffin embedded tissue section. The section was pre-treated using heat mediated antigen retrieval with sodium citrate buffer (pH 6.0). The section was then incubated with the antibody at room temperature and detected using an HRP conjugated compact polymer system. DAB was used as the chromogen. The section was then counterstained with haematoxylin and mounted with DPX.



Immunofluorescent analysis of mGLUR2 staining in LOVO cells. Formalin-fixed cells were permeabilized with 0.1% Triton X-100 in TBS for 5-10 minutes and blocked with 3% BSA-PBS for 30 minutes at room temperature. Cells were probed with the primary antibody in 3% BSA-PBS and incubated overnight at 4 °C in a hidified chamber. Cells were washed with PBST and incubated with a Alexa Fluor 594-conjugated secondary antibody (red) in PBS at room temperature in the dark.

STORAGE

Store at 4°C short term. For long term storage, store at -20°C, avoiding freeze/thaw cycles.

NOTE

For Research Use Only. Not for diagnostic, therapeutics, prophylactic or in vivo use.