

**DATASHEET**

**CD339 Rabbit Polyclonal Antibody**

CAT. NO. APA11586

**KEY FEATURES**

Target	CD339	Source / Host	Rabbit
Reactivity	Human, Mouse, Rat	Clonality	Polyclonal
Applications	WB	Conjugation	Unconjugated
Form / Buffer	Liquid in 0.42% Potassium phosphate, 0.87% Sodium chloride, pH 7.3, 30% glycerol, and 0.01% sodium azide.		Storage at-20°C

**BACKGROUND**

Ligand for multiple Notch receptors and involved in the mediation of Notch signaling . May be involved in cell-fate decisions during hematopoiesis . Seems to be involved in early and late stages of mammalian cardiovascular development. Inhibits myoblast differentiation . Enhances fibroblast growth factor-induced angiogenesis (in vitro).

**APPLICATION**

To ensure optimal assay performance, AREX recommends conducting reagent titration tailored to each testing system for optimal detection results.

WB	1:500 - 1:1000
----	----------------

\*Results are sample-specific. Please refer to your local assay conditions and test parameters for reference.

**PRODUCT OVERVIEW**

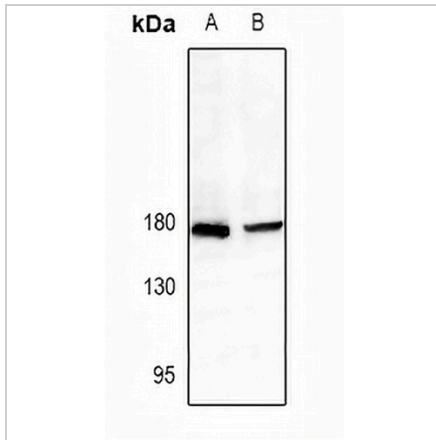
Description	Rabbit polyclonal antibody to CD339
Specificity	Recognizes endogenous levels of CD339 protein.
Antibody Type	Primary antibody
Immunogen	KLH-conjugated synthetic peptide encompassing a sequence within the center region of human CD339. The exact sequence is proprietary.
Purification	The antibody was purified by immunogen affinity chromatography.
Molecular Weight	Predicted: 133 kD; Observed: 180 kD
Form/Buffer	Liquid in 0.42% Potassium phosphate, 0.87% Sodium chloride, pH 7.3, 30% glycerol, and 0.01% sodium azide.
Alternative Names	JAGL1; Protein jagged-1; Jagged1; hj1; CD339
Gene Symbol	JAG1
Entrez Gene	182(Human); 16449(Mouse); 29146(Rat)
SwissProt	P78504(Human); Q9QXX0(Mouse); Q63722(Rat)

\*AREX continuously optimizes our products. Webpage content may not reflect the latest updates. For inquiries, please contact [info@arexbio.com](mailto:info@arexbio.com) or your local distributor.

\*Clone Number, Reactivity, Source/Host and Clonality can be found in the product name and Key Features section above.

**DATASHEET****CD339 Rabbit Polyclonal Antibody**

CAT. NO. APA11586

**DATA**

Western blot analysis of CD339 expression in C6 (A), CT26 (B) whole cell lysates.  
(Predicted band size: 133 kD; Observed band size: 180 kD)

**STORAGE**

Store at 4°C short term. For long term storage, store at -20°C, avoiding freeze/thaw cycles.

**NOTE**

For Research Use Only. Not for diagnostic, therapeutics, prophylactic or in vivo use.