

**DATASHEET**

**Histone H2A Rabbit Polyclonal Antibody**

CAT. NO. APA11620

**KEY FEATURES**

Target	Histone H2A	Source / Host	Rabbit
Reactivity	Human, Mouse, Rat, Bovine, Chicken, Monkey	Clonality	Polyclonal
Applications	WB, IHC	Conjugation	Unconjugated
Form / Buffer	Liquid in 0.42% Potassium phosphate, 0.87% Sodium chloride, pH 7.3, 30% glycerol, and 0.01% sodium azide.		Storage at-20°C

**BACKGROUND**

Core component of nucleosome. Nucleosomes wrap and compact DNA into chromatin, limiting DNA accessibility to the cellular machineries which require DNA as a template. Histones thereby play a central role in transcription regulation, DNA repair, DNA replication and chromosomal stability. DNA accessibility is regulated via a complex set of post-translational modifications of histones, also called histone code, and nucleosome remodeling.

**APPLICATION**

To ensure optimal assay performance, AREX recommends conducting reagent titration tailored to each testing system for optimal detection results.

WB	1:500 - 1:1000
IHC	1:50 - 1:200

\*Results are sample-specific. Please refer to your local assay conditions and test parameters for reference.

**PRODUCT OVERVIEW**

Description	Rabbit polyclonal antibody to Histone H2A
Specificity	Recognizes endogenous levels of Histone H2A protein.
Antibody Type	Primary antibody
Immunogen	KLH-conjugated synthetic peptide encompassing a sequence within the center region of human Histone H2A. The exact sequence is proprietary.
Purification	The antibody was purified by immunogen affinity chromatography.
Molecular Weight	Predicted: 14 kD; Observed: 14 kD
Form/Buffer	Liquid in 0.42% Potassium phosphate, 0.87% Sodium chloride, pH 7.3, 30% glycerol, and 0.01% sodium azide.
Alternative Names	H2AFP; H2AFC; H2AFD; H2AFI; H2AFN; Histone H2A type 1; H2A.1; Histone H2A/p
Gene Symbol	HIST1H2AG; HIST1H2AI; HIST1H2AK; HIST1H2AL; HIST1H2AM
Entrez Gene	8329; 8330; 8332; 8336; 8969(Human); 319164; 319165; 319166; 319167; 319170; 319171; 319172; 319191; 665433(Mouse)
SwissProt	P0C0S8(Human); P22752(Mouse); P02262(Rat)

\*AREX continuously optimizes our products. Webpage content may not reflect the latest updates. For inquiries, please contact [info@arexbio.com](mailto:info@arexbio.com) or your local distributor.

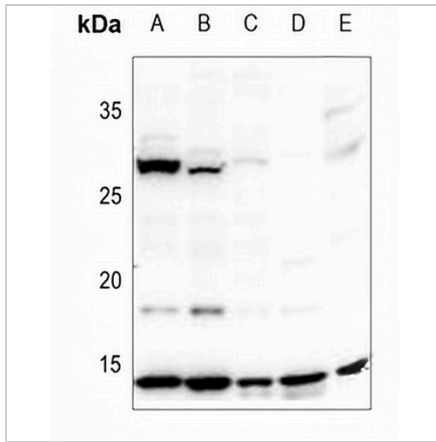
\*Clone Number, Reactivity, Source/Host and Clonality can be found in the product name and Key Features section above.

**DATASHEET**

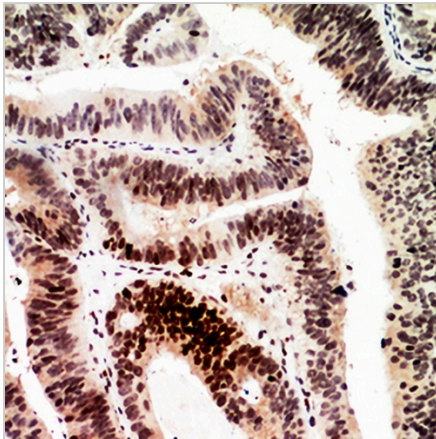
**Histone H2A Rabbit Polyclonal Antibody**

CAT. NO. APA11620

**DATA**



Western blot analysis of Histone H2A expression in U87MG (A), A549 (B), SGC7901 (C), rat lung (D), mouse brain (E) whole cell lysates. (Predicted band size: 14 kD; Observed band size: 14 kD)



Immunohistochemical analysis of Histone H2A staining in human colon cancer formalin fixed paraffin embedded tissue section. The section was pre-treated using heat mediated antigen retrieval with sodium citrate buffer (pH 6.0). The section was then incubated with the antibody at room temperature and detected using an HRP conjugated compact polymer system. DAB was used as the chromogen. The section was then counterstained with haematoxylin and mounted with DPX.

**STORAGE**

Store at 4°C short term. For long term storage, store at -20°C, avoiding freeze/thaw cycles.

**NOTE**

For Research Use Only. Not for diagnostic, therapeutics, prophylactic or in vivo use.