

DATASHEET

RAB21 (Acetyl-K109) Rabbit Polyclonal Antibody

CAT. NO. APA11621

KEY FEATURES

Target	RAB21 (Acetyl-K109)	Source / Host	Rabbit
Reactivity	Human, Mouse, Rat	Clonality	Polyclonal
Applications	WB	Conjugation	Unconjugated
Form / Buffer	Liquid in 0.42% Potassium phosphate, 0.87% Sodium chloride, pH 7.3, 30% glycerol, and 0.01% sodium azide.		Storage at-20°C

BACKGROUND

The small GTPases Rab are key regulators of intracellular membrane trafficking, from the formation of transport vesicles to their fusion with membranes. Rabs cycle between an inactive GDP-bound form and an active GTP-bound form that is able to recruit to membranes different sets of downstream effectors directly responsible for vesicle formation, movement, tethering and fusion . RAB21 is involved in membrane trafficking control . During the mitosis of adherent cells, controls the endosomal trafficking of integrins which is required for the successful completion of cytokinesis . Regulates integrin internalization and recycling, but does not influence the traffic of endosomally translocated receptors in general . As a result, may regulate cell adhesion and migration .

APPLICATION

To ensure optimal assay performance, AREX recommends conducting reagent titration tailored to each testing system for optimal detection results.

WB	1:500 - 1:1000
----	----------------

*Results are sample-specific. Please refer to your local assay conditions and test parameters for reference.

PRODUCT OVERVIEW

Description	Rabbit polyclonal antibody to RAB21 (Acetyl-K109)
Specificity	Recognizes endogenous levels of RAB21 protein only when acetylated at K109.
Antibody Type	Primary antibody
Immunogen	KLH-conjugated synthetic acetylated peptide corresponding to residues surrounding K109 of human RAB21 protein. The exact sequence is proprietary.
Purification	The antibody was purified by immunogen affinity chromatography.
Molecular Weight	Predicted: 24 kD; Observed: 21 kD
Form/Buffer	Liquid in 0.42% Potassium phosphate, 0.87% Sodium chloride, pH 7.3, 30% glycerol, and 0.01% sodium azide.
Alternative Names	KIAA0118; Ras-related protein Rab-21
Gene Symbol	RAB21
Entrez Gene	23011(Human)
SwissProt	Q9UL25(Human)

*AREX continuously optimizes our products. Webpage content may not reflect the latest updates. For inquiries, please contact info@arexbio.com or your local distributor.

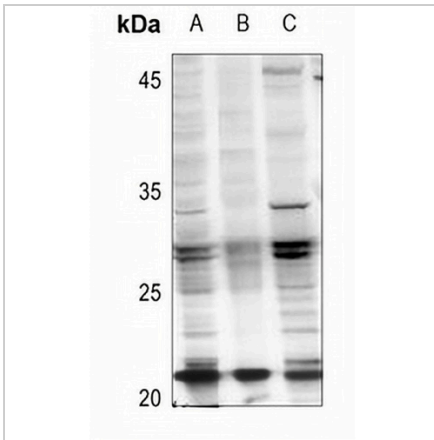
*Clone Number, Reactivity, Source/Host and Clonality can be found in the product name and Key Features section above.

DATASHEET

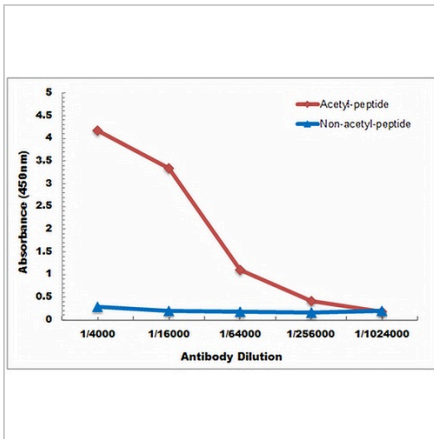
RAB21 (Acetyl-K109) Rabbit Polyclonal Antibody

CAT. NO. APA11621

DATA



Western blot analysis of RAB21 (Acetyl-K109) expression in HepG2 (A), Jurkat (B), CT26 (C) whole cell lysates. (Predicted band size: 24 kD; Observed band size: 21 kD)



Direct ELISA antibody dose-response curve using Anti-RAB21 (Acetyl-K109) Antibody. Antigen (Acetyl-peptide and non-acetyl-peptide) concentration is 5 ug/ml. Goat Anti-Rabbit IgG (H&L) - HRP was used as the secondary antibody, and signal was developed by TMB substrate.

STORAGE

Store at 4°C short term. For long term storage, store at -20°C, avoiding freeze/thaw cycles.

NOTE

For Research Use Only. Not for diagnostic, therapeutics, prophylactic or in vivo use.