

DATASHEET

Histone H2A (Acetyl-K118) Rabbit Polyclonal Antibody

CAT. NO. APA11646

KEY FEATURES

| | | | |
|---------------|---|---------------|--------------|
| Target | Histone H2A (Acetyl-K118) | Source / Host | Rabbit |
| Reactivity | Human, Mouse, Rat | Clonality | Polyclonal |
| Applications | WB | Conjugation | Unconjugated |
| Form / Buffer | Liquid in 0.42% Potassium phosphate, 0.87% Sodium chloride, pH 7.3, 30% glycerol, and 0.01% sodium azide. | Storage | at-20°C |

BACKGROUND

Core component of nucleosome. Nucleosomes wrap and compact DNA into chromatin, limiting DNA accessibility to the cellular machineries which require DNA as a template. Histones thereby play a central role in transcription regulation, DNA repair, DNA replication and chromosomal stability. DNA accessibility is regulated via a complex set of post-translational modifications of histones, also called histone code, and nucleosome remodeling.

APPLICATION

To ensure optimal assay performance, AREX recommends conducting reagent titration tailored to each testing system for optimal detection results.

| | |
|----|----------------|
| WB | 1:500 - 1:1000 |
|----|----------------|

*Results are sample-specific. Please refer to your local assay conditions and test parameters for reference.

PRODUCT OVERVIEW

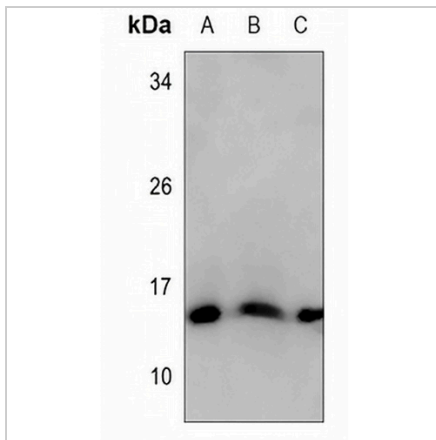
| | |
|-------------------|---|
| Description | Rabbit polyclonal antibody to Histone H2A (Acetyl-K118) |
| Specificity | Recognizes endogenous levels of Histone H2A protein only when acetylated at K118. |
| Antibody Type | Primary antibody |
| Immunogen | KLH-conjugated synthetic acetylated peptide corresponding to residues surrounding K118 of human Histone H2A protein. The exact sequence is proprietary. |
| Purification | The antibody was purified by immunogen affinity chromatography. |
| Molecular Weight | Predicted: 14; Observed: 15 kD |
| Form/Buffer | Liquid in 0.42% Potassium phosphate, 0.87% Sodium chloride, pH 7.3, 30% glycerol, and 0.01% sodium azide. |
| Alternative Names | HIST1H2AG; H2AFP; HIST1H2AI; H2AFC; HIST1H2AK; H2AFD; HIST1H2AL; H2AFI; HIST1H2AM; H2AFN; Histone H2A type 1; H2A.1; Histone H2A/p; H2AFX; H2AX; Histone H2A.x; H2a/x |
| Gene Symbol | HIST1H2AG; HIST1H2AI; HIST1H2AK; HIST1H2AL; HIST1H2AM; H2AFX |
| Entrez Gene | 8329; 8330; 8332; 8336; 8969; 3014(Human); 319164; 15270(Mouse) |
| SwissProt | P0C0S8; P16104(Human); P22752; P27661(Mouse); P02262(Rat) |

*AREX continuously optimizes our products. Webpage content may not reflect the latest updates. For inquiries, please contact info@arexbio.com or your local distributor.

*Clone Number, Reactivity, Source/Host and Clonality can be found in the product name and Key Features section above.

DATASHEET**Histone H2A (Acetyl-K118) Rabbit Polyclonal Antibody**

CAT. NO. APA11646

DATA

Western blot analysis of Histone H2A (Acetyl-K118) expression in mouse muscle (A), rat kidney (B), rat muscle (C) whole cell lysates. (Predicted band size: 14; 15 kD; Observed band size: 15 kD)

STORAGE

Store at 4°C short term. For long term storage, store at -20°C, avoiding freeze/thaw cycles.

NOTE

For Research Use Only. Not for diagnostic, therapeutics, prophylactic or in vivo use.