

DATASHEET

CLCN7 Rabbit Polyclonal Antibody

CAT. NO. APA11655

KEY FEATURES

Target	CLCN7	Source / Host	Rabbit
Reactivity	Human	Clonality	Polyclonal
Applications	WB	Conjugation	Unconjugated
Form / Buffer	Liquid in 0.42% Potassium phosphate, 0.87% Sodium chloride, pH 7.3, 30% glycerol, and 0.01% sodium azide.		Storage at-20°C

BACKGROUND

Slowly voltage-gated channel mediating the exchange of chloride ions against protons . Functions as antiporter and contributes to the acidification of the lysosome lumen and may be involved in maintaining lysosomal pH . The CLC channel family contains both chloride channels and proton-coupled anion transporters that exchange chloride or another anion for protons . The presence of conserved gating glutamate residues is typical for family members that function as antiporters .

APPLICATION

To ensure optimal assay performance, AREX recommends conducting reagent titration tailored to each testing system for optimal detection results.

WB	1:500 - 1:1000
----	----------------

*Results are sample-specific. Please refer to your local assay conditions and test parameters for reference.

PRODUCT OVERVIEW

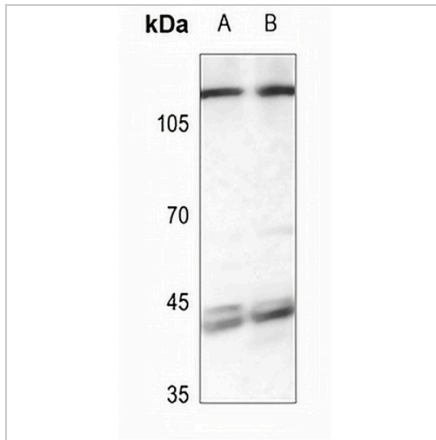
Description	Rabbit polyclonal antibody to CLCN7
Specificity	Recognizes endogenous levels of CLCN7 protein.
Antibody Type	Primary antibody
Immunogen	KLH-conjugated synthetic peptide encompassing a sequence within the N-term region of human CLCN7. The exact sequence is proprietary.
Purification	The antibody was purified by immunogen affinity chromatography.
Molecular Weight	Predicted: 88 kD; Observed: 110 kD
Form/Buffer	Liquid in 0.42% Potassium phosphate, 0.87% Sodium chloride, pH 7.3, 30% glycerol, and 0.01% sodium azide.
Alternative Names	H(+)/Cl(-) exchange transporter 7; Chloride channel 7 alpha subunit; Chloride channel protein 7; ClC-7
Gene Symbol	CLCN7
Entrez Gene	1186(Human)
SwissProt	P51798(Human)

*AREX continuously optimizes our products. Webpage content may not reflect the latest updates. For inquiries, please contact info@arexbio.com or your local distributor.

*Clone Number, Reactivity, Source/Host and Clonality can be found in the product name and Key Features section above.

DATASHEET**CLCN7 Rabbit Polyclonal Antibody**

CAT. NO. APA11655

DATA

Western blot analysis of CLCN7 expression in HEK293T (A), MCF7 (B) whole cell lysates.
(Predicted band size: 88 kD; Observed band size: 110 kD)

STORAGE

Store at 4°C short term. For long term storage, store at -20°C, avoiding freeze/thaw cycles.

NOTE

For Research Use Only. Not for diagnostic, therapeutics, prophylactic or in vivo use.