

DATASHEET

MCOLN3 Rabbit Polyclonal Antibody

CAT. NO. APA11661

KEY FEATURES

Target	MCOLN3	Source / Host	Rabbit
Reactivity	Human, Mouse, Rat	Clonality	Polyclonal
Applications	WB	Conjugation	Unconjugated
Form / Buffer	Liquid in 0.42% Potassium phosphate, 0.87% Sodium chloride, pH 7.3, 30% glycerol, and 0.01% sodium azide.		Storage at -20°C

BACKGROUND

Nonselective cation channel probably playing a role in the regulation of membrane trafficking events. Acts as a Ca(2+)-permeable cation channel with inwardly rectifying activity -permeable cation channel with inwardly rectifying activity . Mediates release of Ca(2+) from endosomes to the cytoplasm, contributes to endosomal acidification and is involved in the regulation of membrane trafficking and fusion in the endosomal pathway . Also permeable to Mg(2+), Na(+) and K(+) . Does not seem to act as mechanosensory transduction channel in inner ear sensory hair cells. Proposed to play a critical role at the cochlear stereocilia ankle-link region during hair-bundle growth . Involved in the regulation of autophagy .

APPLICATION

To ensure optimal assay performance, AREX recommends conducting reagent titration tailored to each testing system for optimal detection results.

WB	1:500 - 1:1000
----	----------------

*Results are sample-specific. Please refer to your local assay conditions and test parameters for reference.

PRODUCT OVERVIEW

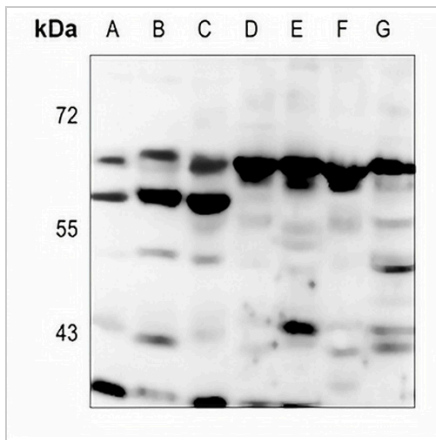
Description	Rabbit polyclonal antibody to MCOLN3
Specificity	Recognizes endogenous levels of MCOLN3 protein.
Antibody Type	Primary antibody
Immunogen	KLH-conjugated synthetic peptide encompassing a sequence within the center region of human MCOLN3. The exact sequence is proprietary.
Purification	The antibody was purified by immunogen affinity chromatography.
Molecular Weight	Predicted: 64 kD; Observed: 64; 58 kD
Form/Buffer	Liquid in 0.42% Potassium phosphate, 0.87% Sodium chloride, pH 7.3, 30% glycerol, and 0.01% sodium azide.
Alternative Names	Mucolipin-3
Gene Symbol	MCOLN3
Entrez Gene	55283(Human); 171166(Mouse)
SwissProt	Q8TDD5(Human); Q8R4F0(Mouse)

*AREX continuously optimizes our products. Webpage content may not reflect the latest updates. For inquiries, please contact info@arexbio.com or your local distributor.

*Clone Number, Reactivity, Source/Host and Clonality can be found in the product name and Key Features section above.

DATASHEET**MCOLN3 Rabbit Polyclonal Antibody**

CAT. NO. APA11661

DATA

Western blot analysis of MCOLN3 expression in SGC7901 (A), HCT116 (B), Panc1 (C), mouse lung (D), mouse kidney (E), rat lung (F), rat kidney (G) whole cell lysates. (Predicted band size: 64 kD; Observed band size: 64; 58 kD)

STORAGE

Store at 4°C short term. For long term storage, store at -20°C, avoiding freeze/thaw cycles.

NOTE

For Research Use Only. Not for diagnostic, therapeutics, prophylactic or in vivo use.