

**DATASHEET**

**ATRIP (Phospho-S68) Rabbit Polyclonal Antibody**

CAT. NO. APA11666

**KEY FEATURES**

Target	ATRIP (Phospho-S68)	Source / Host	Rabbit
Reactivity	Human, Mouse, Rat	Clonality	Polyclonal
Applications	WB	Conjugation	Unconjugated
Form / Buffer	Liquid in 0.42% Potassium phosphate, 0.87% Sodium chloride, pH 7.3, 30% glycerol, and 0.01% sodium azide.		Storage at -20°C

**BACKGROUND**

Required for checkpoint signaling after DNA damage. Required for ATR expression, possibly by stabilizing the protein.

**APPLICATION**

To ensure optimal assay performance, AREX recommends conducting reagent titration tailored to each testing system for optimal detection results.

WB	1:500 - 1:1000
----	----------------

\*Results are sample-specific. Please refer to your local assay conditions and test parameters for reference.

**PRODUCT OVERVIEW**

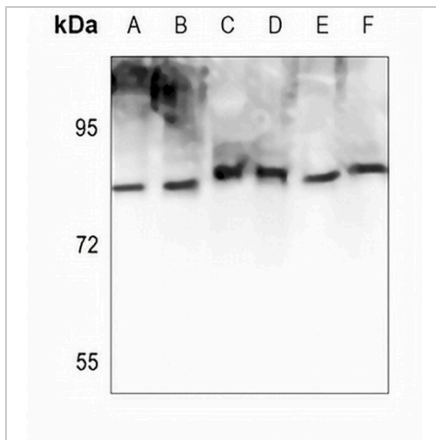
Description	Rabbit polyclonal antibody to ATRIP (Phospho-S68)
Specificity	Recognizes endogenous levels of ATRIP protein only when phosphorylated at S68.
Antibody Type	Primary antibody
Immunogen	KLH-conjugated synthetic phosphopeptide corresponding to residues surrounding S68 of human ATRIP protein. The exact sequence is proprietary.
Purification	The antibody was purified by immunogen affinity chromatography.
Molecular Weight	Predicted: 85 kD; Observed: 86 kD
Form/Buffer	Liquid in 0.42% Potassium phosphate, 0.87% Sodium chloride, pH 7.3, 30% glycerol, and 0.01% sodium azide.
Alternative Names	AGS1; ATR-interacting protein; ATM and Rad3-related-interacting protein
Gene Symbol	ATRIP
Entrez Gene	84126(Human); 235610(Mouse)
SwissProt	Q8WXE1(Human); Q8BMG1(Mouse)

\*AREX continuously optimizes our products. Webpage content may not reflect the latest updates. For inquiries, please contact [info@arexbio.com](mailto:info@arexbio.com) or your local distributor.

\*Clone Number, Reactivity, Source/Host and Clonality can be found in the product name and Key Features section above.

**DATASHEET****ATRIP (Phospho-S68) Rabbit Polyclonal Antibody**

CAT. NO. APA11666

**DATA**

Western blot analysis of ATRIP (Phospho-S68) expression in HCT116 (A), A375 (B), mouse liver (C), mouse muscle (D), rat liver (E), rat muscle (F) whole cell lysates. (Predicted band size: 85 kD; Observed band size: 86 kD)

**STORAGE**

Store at 4°C short term. For long term storage, store at -20°C, avoiding freeze/thaw cycles.

**NOTE**

For Research Use Only. Not for diagnostic, therapeutics, prophylactic or in vivo use.