

DATASHEET

TSSC1 Rabbit Polyclonal Antibody

CAT. NO. APA11687

KEY FEATURES

Target	TSSC1	Source / Host	Rabbit
Reactivity	Human, Mouse, Rat	Clonality	Polyclonal
Applications	WB, IF/ICC	Conjugation	Unconjugated
Form / Buffer	Liquid in 0.42% Potassium phosphate, 0.87% Sodium chloride, pH 7.3, 30% glycerol, and 0.01% sodium azide.		Storage at -20°C

BACKGROUND

Acts as a component of endosomal retrieval machinery that is involved in protein transport from early endosomes to either recycling endosomes or the trans-Golgi network . Mediates the recruitment of Golgi-associated retrograde protein (GARP) complex to the trans-Golgi network and controls early endosome-to-Golgi transport of internalized protein . Promotes the recycling of internalized transferrin receptor (TFRC) to the plasma membrane through interaction with endosome-associated recycling protein (EARP) complex . Controls proper insulin distribution and secretion, and retention of cargo in mature dense core vesicles . Required for the stability of the endosome-associated retrograde protein (EARP) complex subunits and for proper localization and association of EARP with membranes .

APPLICATION

To ensure optimal assay performance, AREX recommends conducting reagent titration tailored to each testing system for optimal detection results.

WB	1:500 - 1:1000
IF/ICC	1:50 - 1:200

*Results are sample-specific. Please refer to your local assay conditions and test parameters for reference.

PRODUCT OVERVIEW

Description	Rabbit polyclonal antibody to TSSC1
Specificity	Recognizes endogenous levels of TSSC1 protein.
Antibody Type	Primary antibody
Immunogen	KLH-conjugated synthetic peptide encompassing a sequence within the C-term region of human TSSC1. The exact sequence is proprietary.
Purification	The antibody was purified by immunogen affinity chromatography.
Molecular Weight	Predicted: 43 kD; Observed: 52 kD
Form/Buffer	Liquid in 0.42% Potassium phosphate, 0.87% Sodium chloride, pH 7.3, 30% glycerol, and 0.01% sodium azide.
Alternative Names	Protein TSSC1; Tumor-suppressing STF cDNA 1 protein; Tumor-suppressing subchromosomal transferable fragment candidate gene 1 protein
Gene Symbol	TSSC1
Entrez Gene	7260(Human); 380752(Mouse); 362721(Rat)
SwissProt	Q53HC9(Human); Q8K0G5(Mouse); Q5PPK9(Rat)

*AREX continuously optimizes our products. Webpage content may not reflect the latest updates. For inquiries, please contact info@arexbio.com or your local distributor.

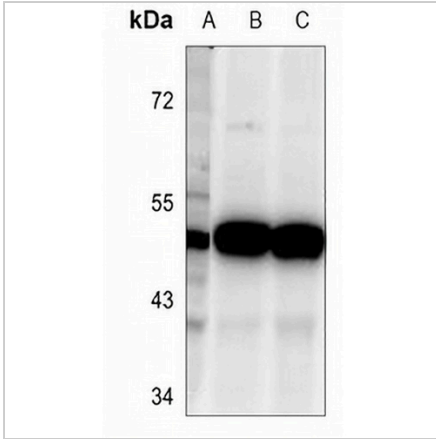
*Clone Number, Reactivity, Source/Host and Clonality can be found in the product name and Key Features section above.

DATASHEET

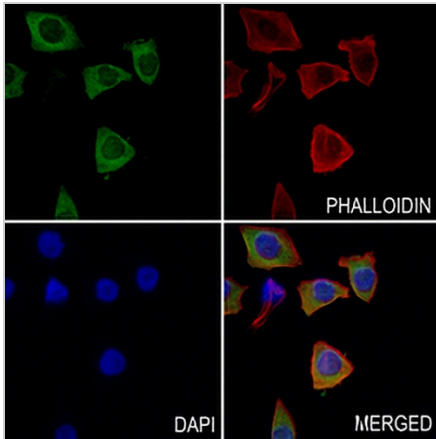
TSSC1 Rabbit Polyclonal Antibody

CAT. NO. APA11687

DATA



Western blot analysis of TSSC1 expression in HEK293T (A), mouse brain (B), rat brain (C) whole cell lysates. (Predicted band size: 43 kD; Observed band size: 52 kD)



Immunofluorescent analysis of TSSC1 staining in MCF7 cells. Formalin-fixed cells were permeabilized with 0.1% Triton X-100 in TBS for 5-10 minutes and blocked with 3% BSA-PBS for 30 minutes at room temperature. Cells were probed with the primary antibody in 3% BSA-PBS and incubated overnight at 4 °C in a humidified chamber. Cells were washed with PBST and incubated with a AREX® Fluor 488 -conjugated secondary antibody (green) in PBS at room temperature in the dark. Phalloidin - AREX® Fluor 594 was used to stain Actin filaments (red). DAPI was used to stain the cell nuclei (blue).

STORAGE

Store at 4°C short term. For long term storage, store at -20°C, avoiding freeze/thaw cycles.

NOTE

For Research Use Only. Not for diagnostic, therapeutics, prophylactic or in vivo use.