

DATASHEET

PGBD1 Rabbit Polyclonal Antibody

CAT. NO. APA11696

KEY FEATURES

Target	PGBD1	Source / Host	Rabbit
Reactivity	Human, Mouse	Clonality	Polyclonal
Applications	WB, IHC	Conjugation	Unconjugated
Form / Buffer	Liquid in 0.42% Potassium phosphate, 0.87% Sodium chloride, pH 7.3, 30% glycerol, and 0.01% sodium azide.		Storage at -20°C

BACKGROUND

Transposase-derived from PiggyBac DNA transposons. Although it has been fully domesticated and lacks transposase activity, PGBD1 has acquired DNA-binding capability. It preferentially binds in and around genes involved in neuronal development, leading to their transcriptional pausing. Notably, PGBD1 suppresses paraspeckle assembly in neuronal cells.

APPLICATION

To ensure optimal assay performance, AREX recommends conducting reagent titration tailored to each testing system for optimal detection results.

WB	1:500 - 1:1000
IHC	1:50 - 1:200

*Results are sample-specific. Please refer to your local assay conditions and test parameters for reference.

PRODUCT OVERVIEW

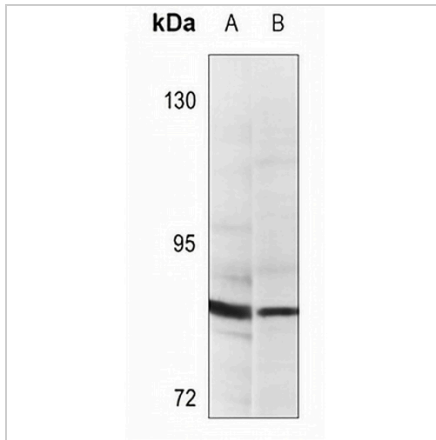
Description	Rabbit polyclonal antibody to PGBD1
Specificity	Recognizes endogenous levels of PGBD1 protein.
Antibody Type	Primary antibody
Immunogen	KLH-conjugated synthetic peptide encompassing a sequence within the center region of human PGBD1. The exact sequence is proprietary.
Purification	The antibody was purified by immunogen affinity chromatography.
Molecular Weight	Predicted: 92 kD; Observed: 92 kD
Form/Buffer	Liquid in 0.42% Potassium phosphate, 0.87% Sodium chloride, pH 7.3, 30% glycerol, and 0.01% sodium azide.
Alternative Names	PiggyBac transposable element-derived protein 1; Cerebral protein 4
Gene Symbol	PGBD1
Entrez Gene	84547(Human)
SwissProt	Q96JS3(Human)

*AREX continuously optimizes our products. Webpage content may not reflect the latest updates. For inquiries, please contact info@arexbio.com or your local distributor.

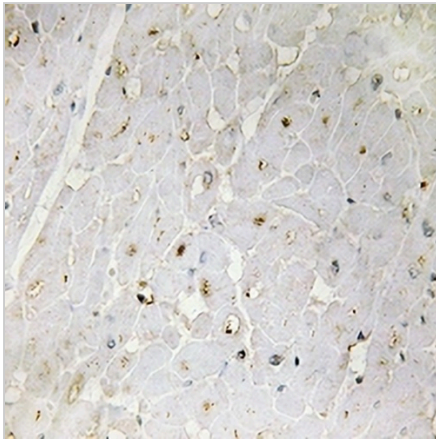
*Clone Number, Reactivity, Source/Host and Clonality can be found in the product name and Key Features section above.

DATASHEET**PGBD1 Rabbit Polyclonal Antibody**

CAT. NO. APA11696

DATA

Western blot analysis of PGBD1 expression in CT26 (A), HeLa (B) whole cell lysates. (Predicted band size: 92 kD; Observed band size: 92 kD)



Immunohistochemical analysis of PGBD1 staining in human heart formalin fixed paraffin embedded tissue section. The section was pre-treated using heat mediated antigen retrieval with sodium citrate buffer (pH 6.0). The section was then incubated with the antibody at room temperature and detected using an HRP conjugated compact polymer system. DAB was used as the chromogen. The section was then counterstained with haematoxylin and mounted with DPX.

STORAGE

Store at 4°C short term. For long term storage, store at -20°C, avoiding freeze/thaw cycles.

NOTE

For Research Use Only. Not for diagnostic, therapeutics, prophylactic or in vivo use.